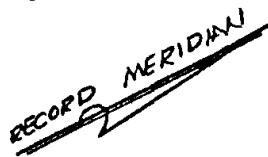
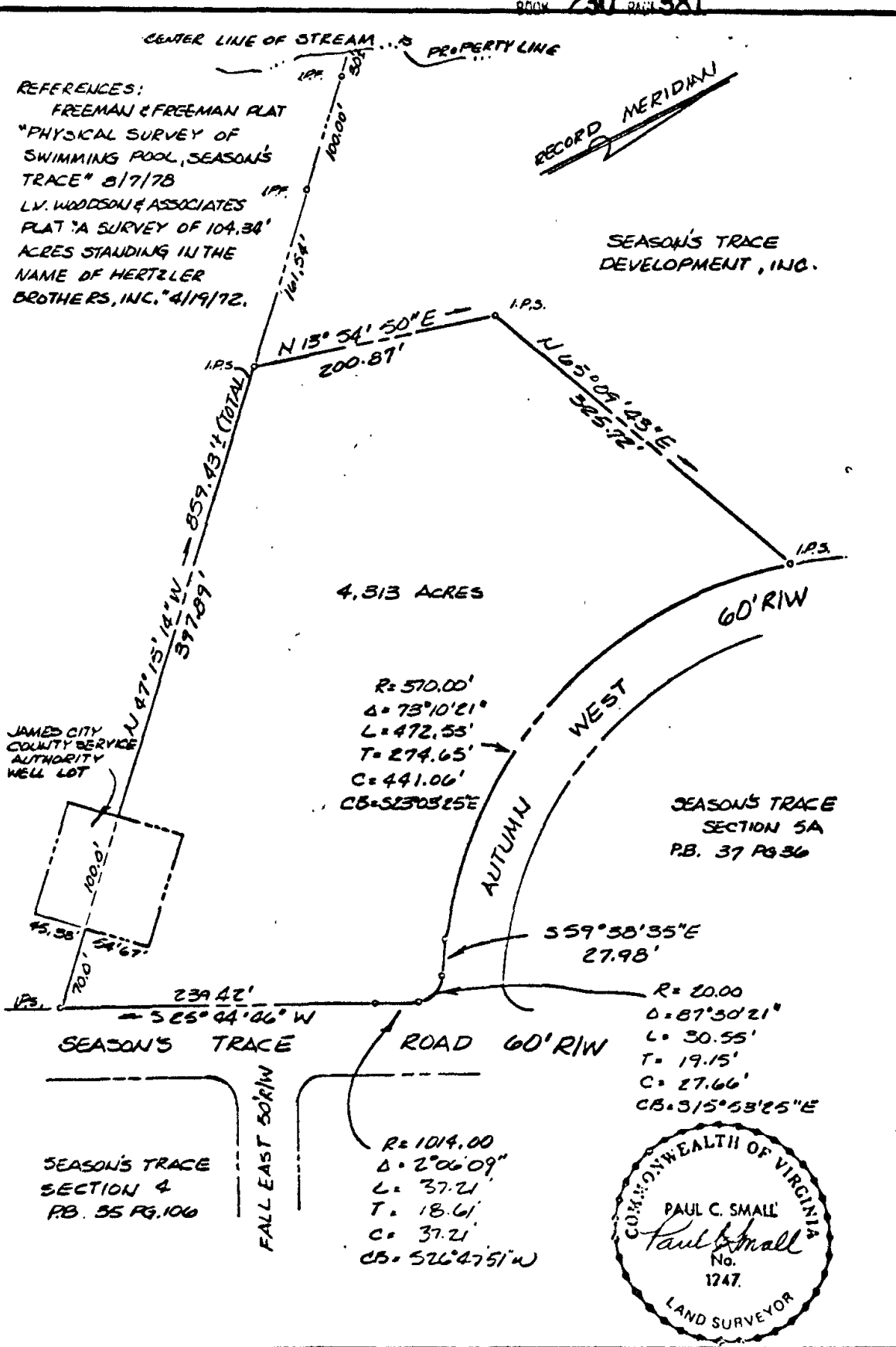


REFERENCES:

FREEMAN & FREEMAN PLAT
 "PHYSICAL SURVEY OF
 SWIMMING POOL, SEASON'S
 TRACE" 8/7/78
 LV. WOODSON & ASSOCIATES
 PLAT "A SURVEY OF 104.34"
 ACRES STANDING IN THE
 NAME OF HERTZLER
 BROTHERS, INC." 4/19/72.



SEASON'S TRACE
 DEVELOPMENT, INC.



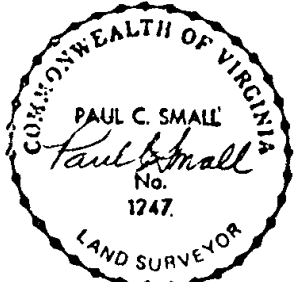
4.313 ACRES

R = 570.00'
 Δ = 73°10'21"
 L = 472.55'
 T = 274.65'
 C = 441.06'
 CB = S23°03'25"E

SEASON'S TRACE
 SECTION 5A
 P.B. 37 PG 36

R = 20.00
 Δ = 87°30'21"
 L = 30.55'
 T = 19.15'
 C = 27.66'
 CB = S15°53'25"E

R = 1014.00
 Δ = 2°06'09"
 L = 37.21'
 T = 18.61'
 C = 37.21'
 CB = S26°47'51"W



AES, a professional corporation architects, engineers, surveyors, and planners Williamsburg, Virginia

RECREATION CENTER LOT - 4.313 ACRES
 OF THE PROPERTY OF
 SEASON'S TRACE DEVELOPMENT, INC.
 POWHATAN DISTRICT JAMES CITY COUNTY VIRGINIA

Scale: 1"=100' Ref.: DE149/185 Date: 6/17/82 Job No.: 5153