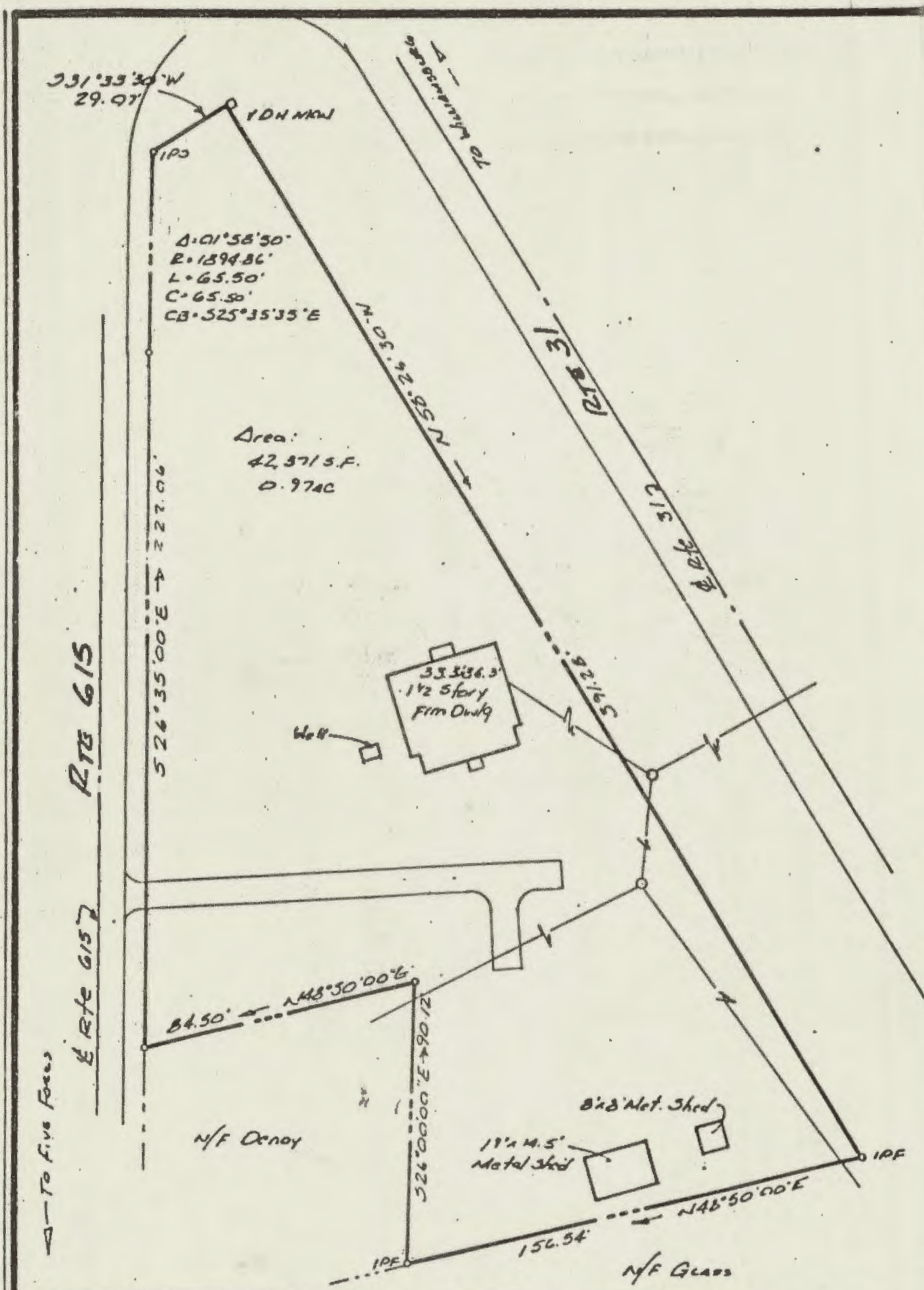
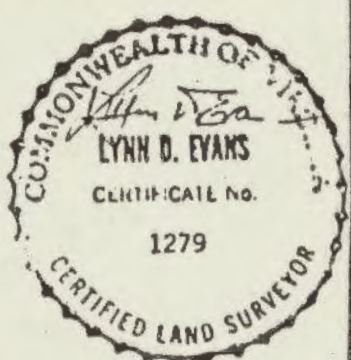


(47-3)
(2-200)



→ To five fives

Rte 615



ref.:
DB 35/176
PB 9/40
DB 59/198
Hwy PB 1/85

A Survey of 0.97ac. of land
for conveyance to
Samuel K. Wallace
James City County, Va. (47-3)(2-200)

date: May 4, 1982 scale: 1" = 40'

Evans Surveying Co., P. C.	P.O. Box 963 Williamsburg, Va.	J.O. 802.
----------------------------------	-----------------------------------	--------------