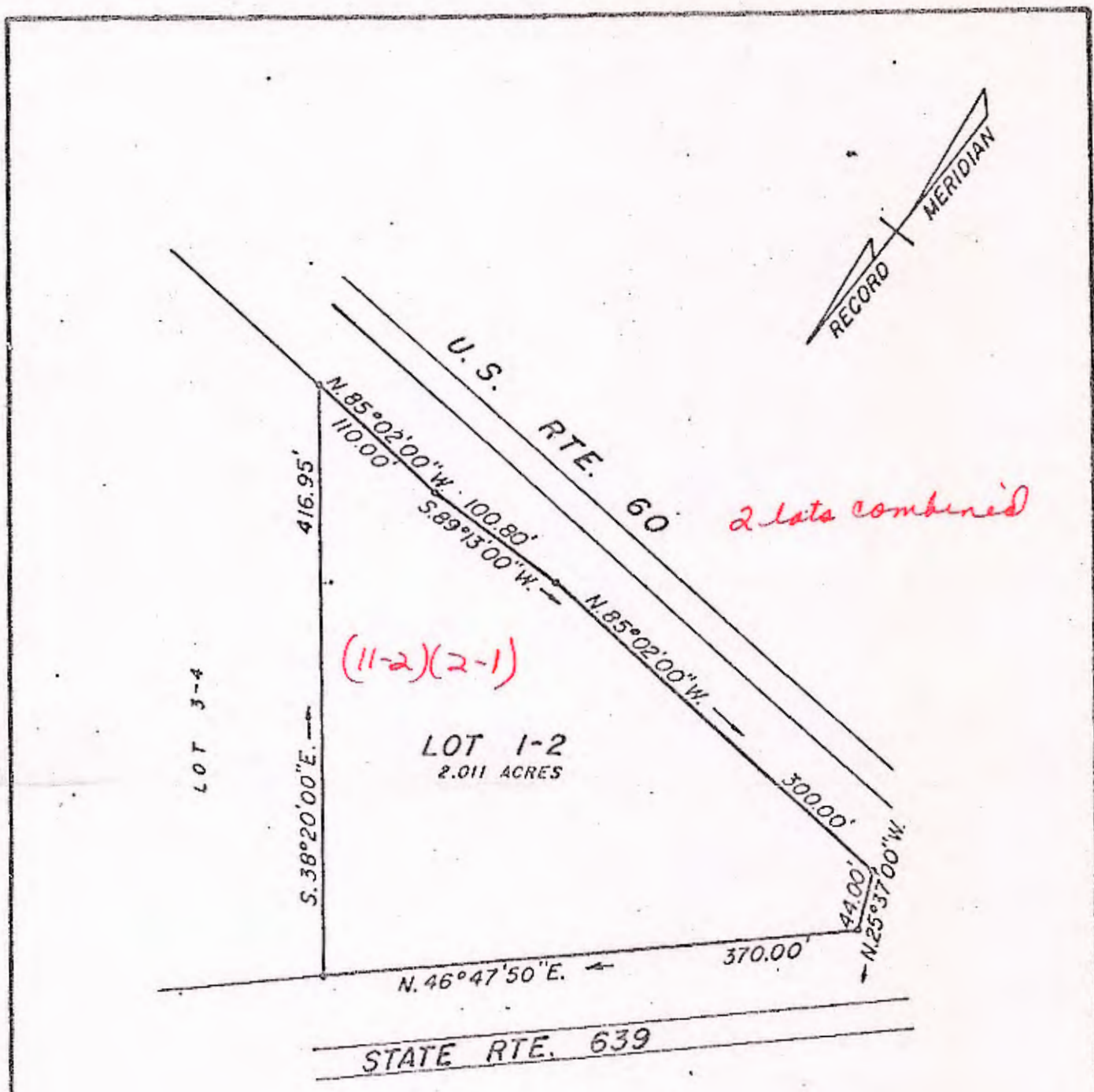


old 80



2 lots combined

(11-2)(2-1)

This subdivision is approved by the undersigned in accordance with existing subdivision regulations and may be committed to record.

Signed William C. Potts Jr.
Date 5-22-80



Architects and engineers, inc. architects, engineers, surveyors, and planners Williamsburg, Virginia

LEGEND: IP IRON PIN --- PROPERTY LINE - - - CENTERLINE --- EASEMENT LINE

A SURVEY OF
LOT 1-2 NORTH COUNTY SUBDIVISION
LYING IN STONEHOUSE DISTRICT, JAMES CITY COUNTY, VIRGINIA

SCALE 1" = 100' DATE MAY 15, 1980 AREA 2.011 ACRES