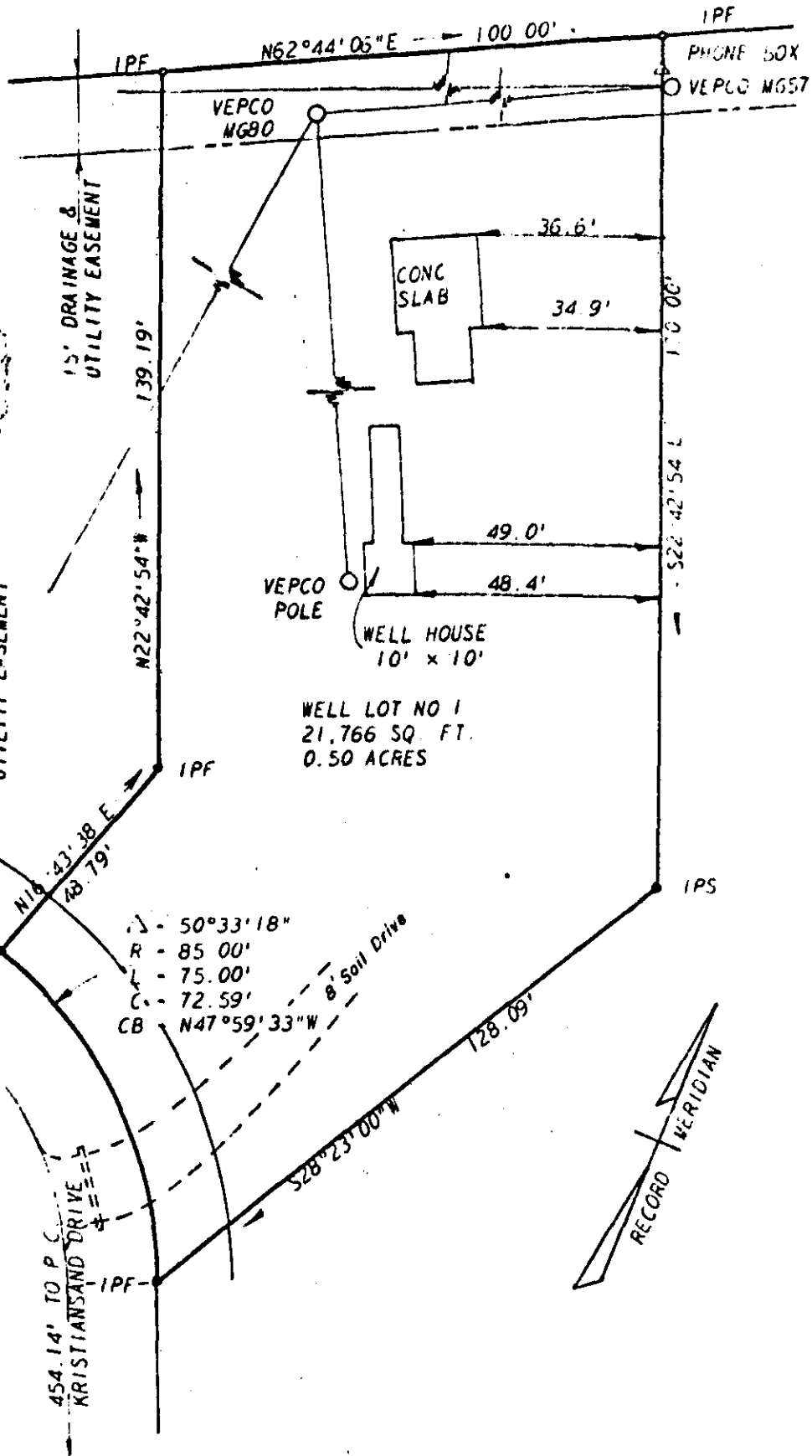


NORGE ELEMENTARY SCHOOL



LOT 31
15' DRAINAGE & UTILITY EASEMENT
NINA LANE - 60'-R/W
454.14' TO P.C.
KRISTIANSAND DRIVE



architects and engineers, inc architects, engineers, surveyors, and planners Williamsburg, Virginia

LEGEND IP IRON PIN — PROPERTY LINE - CENTERLINE --- EASEMENT LINE

A SURVEY OF WELL LOT 1, KRISTIANSAND SUBDIVISION
STANDING IN THE NAME OF BRUNK MECHANICAL CORP
LYING IN POWHATAN DISTRICT, JAMES CITY COUNTY, VIRGINIA

SCALE 1" = 30' DATE MAY 9, 1979 AREA 0.500 ACRE