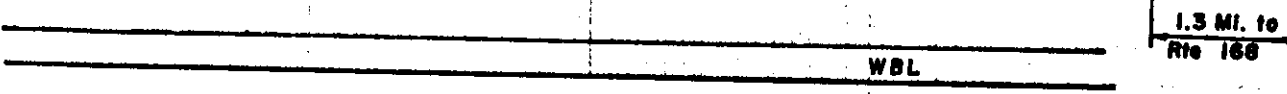
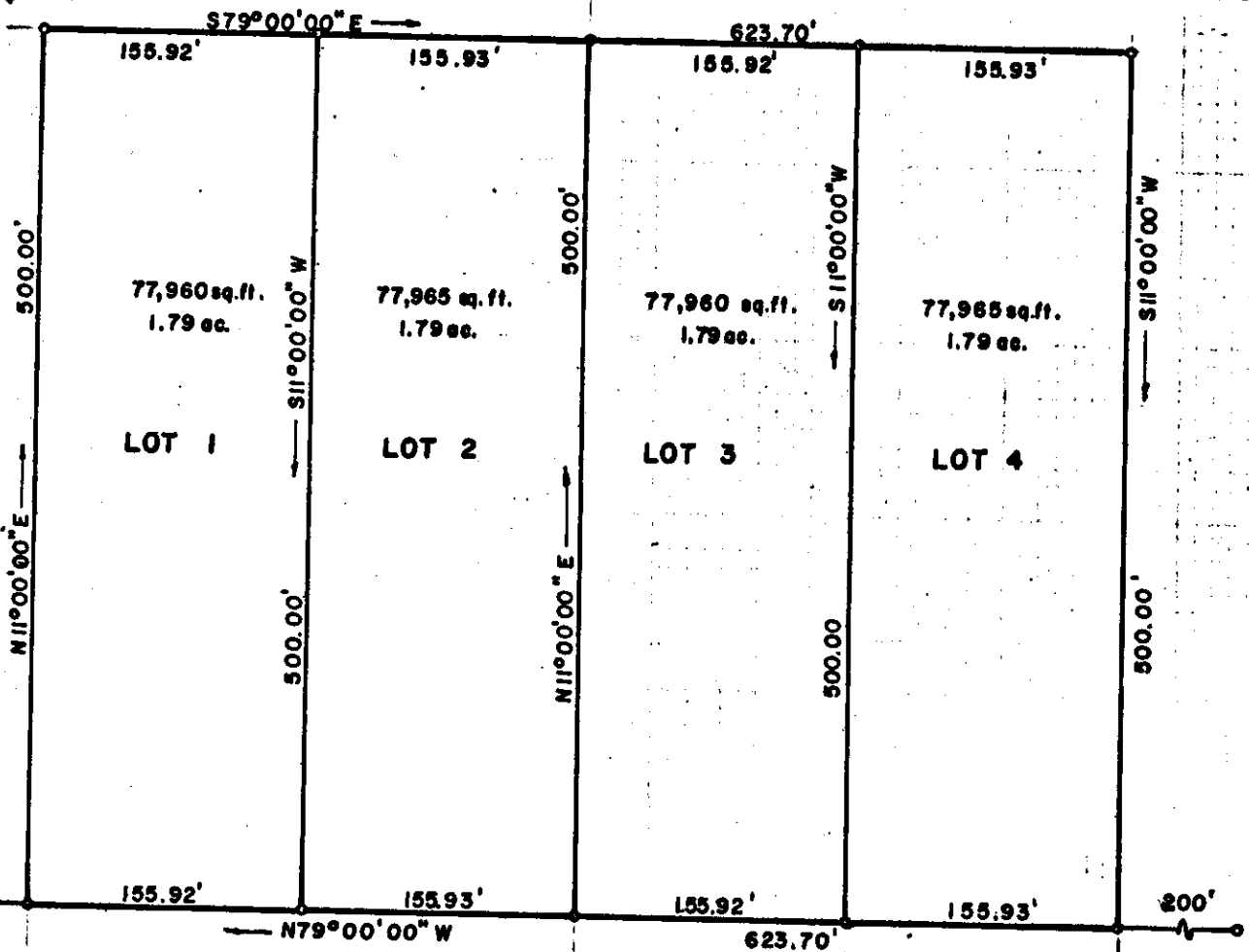


Now or Formerly  
Merlin & Wray

Record Meridian

Now or Formerly  
Merlin & Wray

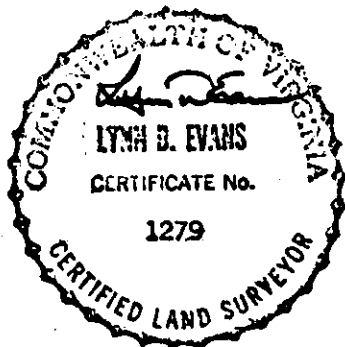


U.S. RTE 60

This subdivision is approved by the  
designated in accordance with  
the subdivision regulations and  
shall be committed to record.

Iron Pipes, or Pins, at all corners.

*William C. Parnell*  
2-15-79



REF.  
DB 138/551  
PB 18/42

EUGENE C. PARNELL SUBDIVISION  
JAMES CITY COUNTY, VA.

1" = 100'

FEB. 13, 1979

# 116 A

Recorded 16<sup>th</sup> day of February 1979  
in

D. B. No. 191 pages 827

EVANS SURVEYING CO., P.C.  
Williamsburg, Va.

*Juliette C. Clotcher* Clerk  
by *Claudia J. Blake*, Dep. Clerk