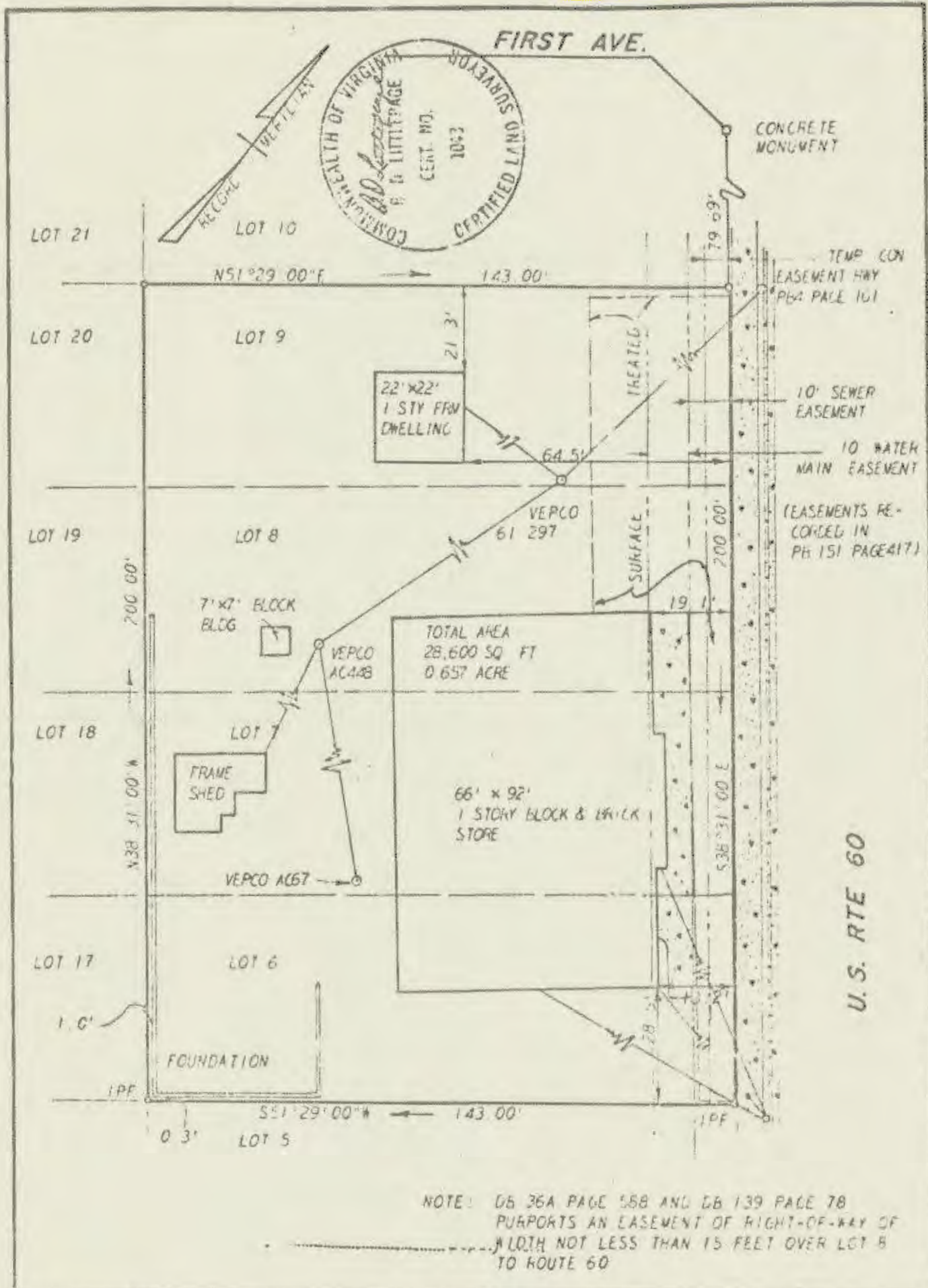


*Colonial Terrace*



NOTE: DB 36A PAGE 588 AND DB 139 PAGE 78  
PURPORTS AN EASEMENT OF RIGHT-OF-WAY OF  
WIDTH NOT LESS THAN 15 FEET OVER LOT 8  
TO ROUTE 60

53 architects and engineers, inc. architects engineers surveyors and planners Williamsburg, Virginia  
 A SURVEY FOR CONVEYANCE TO A J & L CORPORATION  
 LOTS 6, 7, 8 AND 9 AND IMPROVEMENTS, BLOCK 1, COLONIAL TERRACE  
 LYING IN JAMES CITY COUNTY, VIRGINIA  
 DATE DECEMBER 28, 1976

U.S. RTE 60