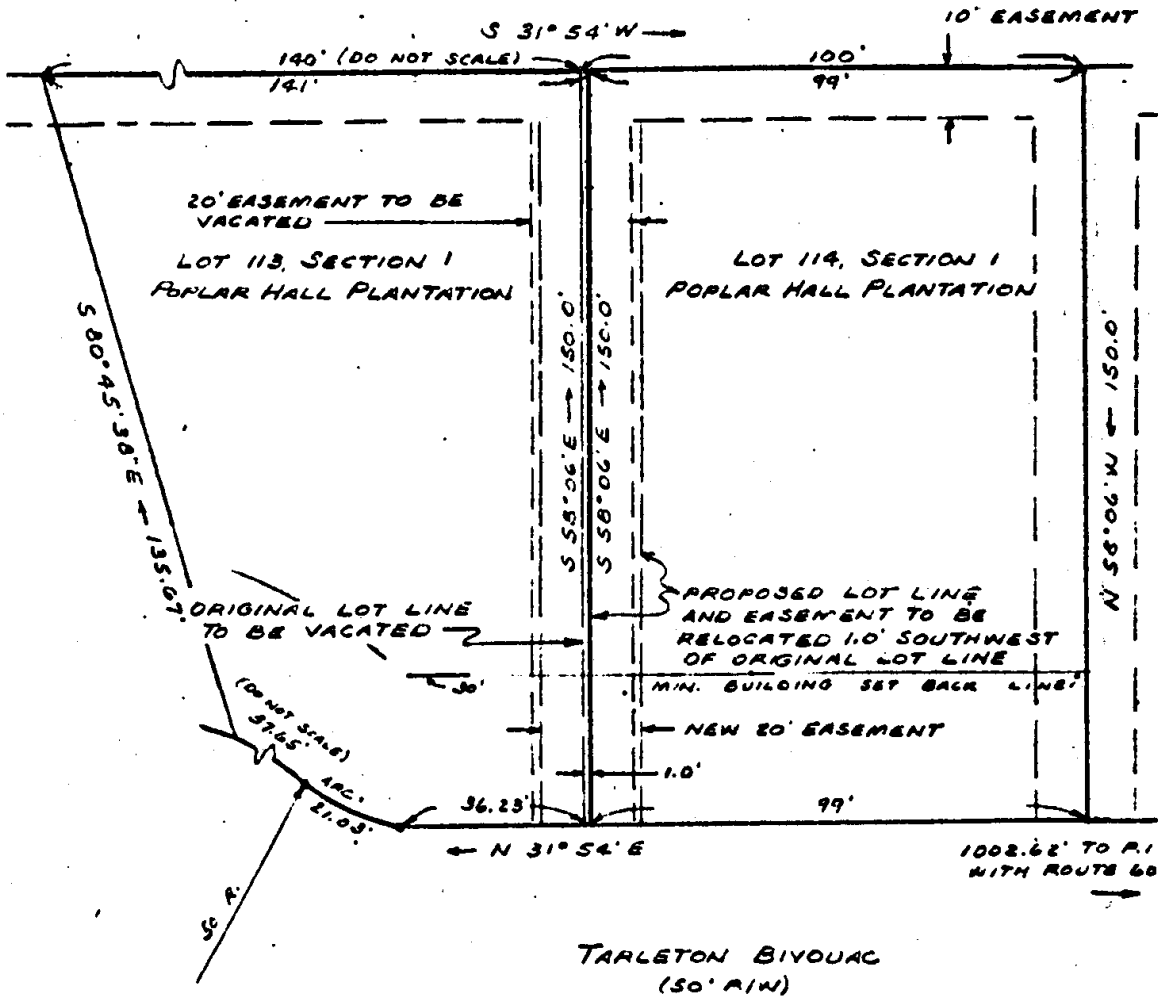


WINDY HILL TRAILER PARK



PLAT
 SHOWING VACATION AND RELOCATION OF
 LOT LINE BETWEEN
 LOTS 113 AND 114, SECTION 1,
 POPLAR HALL PLANTATION
 BEING LOCATED ON TARLETON BIVOUC
 JAMES CITY COUNTY, VIRGINIA
 SCALE: 1" = 30' APRIL 28, 1977

S. J. GLASS & ASSOCIATES
 ENGINEERING SERVICES -- HAMPTON, VIRGINIA

P. F. NO. A.M. - 267-E FIELD WORK BY: -