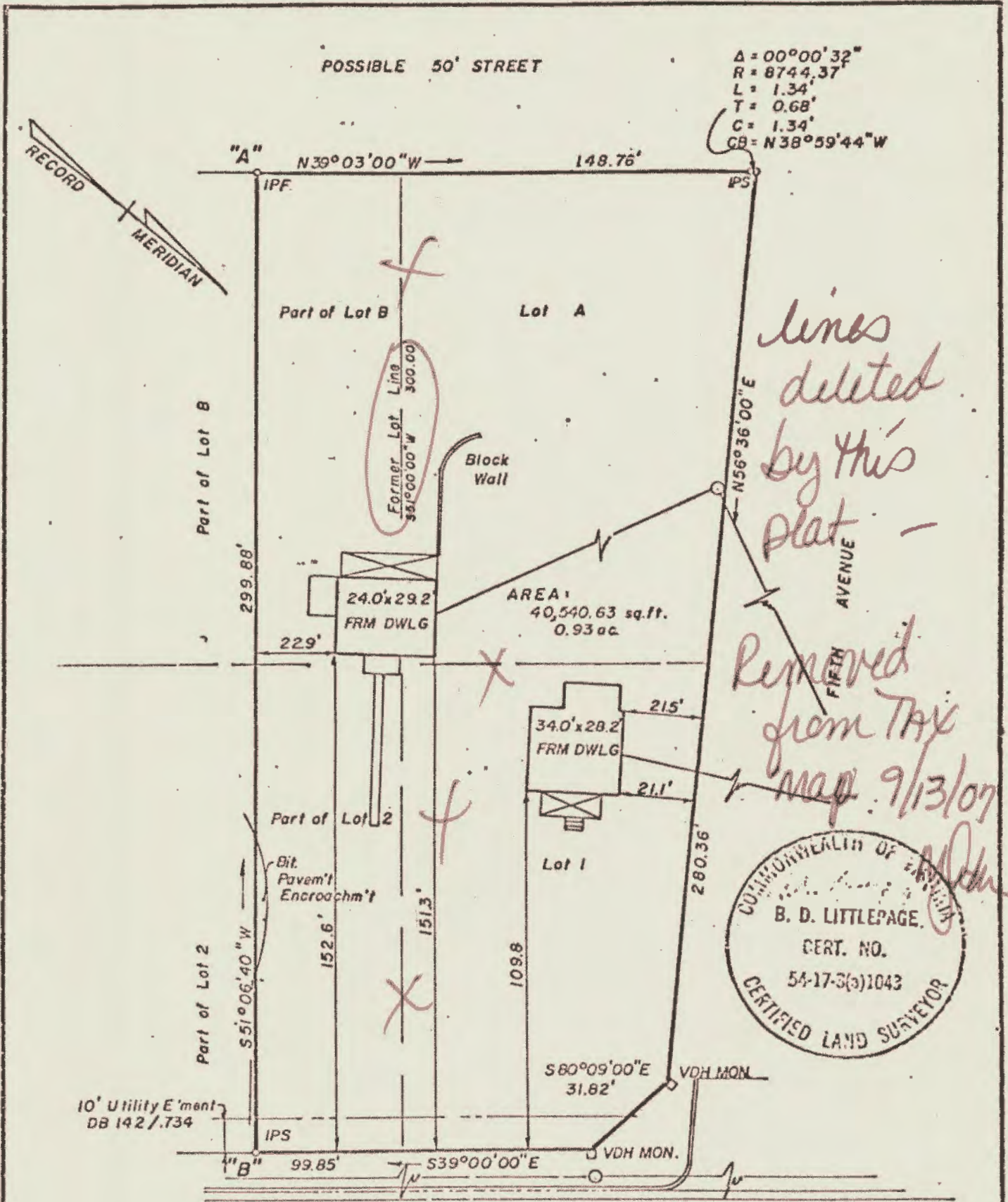


Lots. 1 + 2, A + B BK 5
41 306 50001

BOOK 168 PAGE 453

270(0) (5) -1



lines deleted by this plat -

Removed from Tax map 9/13/07



Line "A"-"B" as agreed on by the undersigned owners.

Robert G. Berry
Paul E. Berry

B. D. Littlepage
Surveyor

WOODSON, LITTLEPAGE & D-YOUNG, INC. ENGINEERS, SURVEYORS & PLANNERS, P. O. DRAWER 80 WILLIAMSBURG, VIRGINIA 23186

LEGEND: — IP — IRON PIN, — — — PROPERTY LINE, - - - CENTERLINE, . . . EASEMENT LINE

PLAT OF PROPERTY OF G SQUARE, INC., FOR VACATION OF LOT LINES BETWEEN LOTS 1, 2, A & B ENTIRE PARCEL TO BE DESIGNATED AS LOT 1, BLOCK 5, COLONIAL TERRACE LYING IN JAMESTOWN DISTRICT, JAMES CITY COUNTY, VIRGINIA

SCALE: 1" = 40' REF: PB5/27 DATE: MARCH 17, 1976 AREA: SHOWN

J.O. 1600A