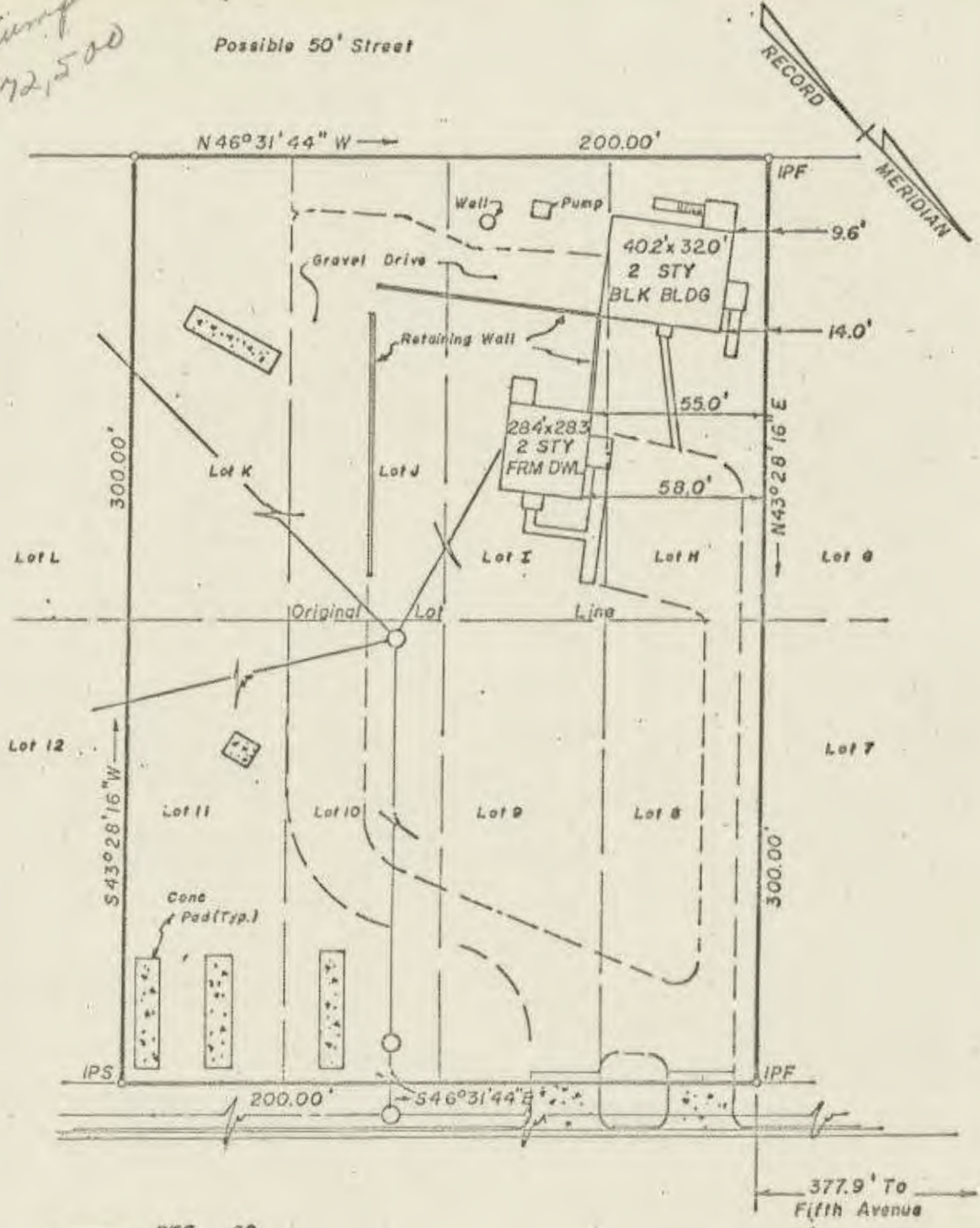


PK TO RECORD 2/18/76
 CJE

D/Assumption
 #172,500



AREA = 60,000.00 sq. ft.
 1.38 ac

See 27

* REF: PB5/27, PB26/267, 268, DB126/474, DB147/210

WOODSON, LITTLEPAGE & B-YOUNG, INC.	ENGINEERS, SURVEYORS & PLANNERS, P. O. DRAWER FU	WILLIAMSBURG, VIRGINIA 23186
LEGEND: IP = IRON PIN, — — — PROPERTY LINE, — — — CENTERLINE, - - - EASEMENT LINE		
A SURVEY FOR CONVEYANCE TO PBF ASSOCIATES LOTS B, 9, 10, 11, H, I, J, AND IMPROVEMENTS, COLONIAL TERRACE LYING IN JAMESTOWN DISTRICT, JAMES CITY COUNTY, VIRGINIA		
SCALE: 1" = 50'	REF: *	DATE: FEBRUARY 3, 1976
		AREA: SHOWN