

CURVE DATA

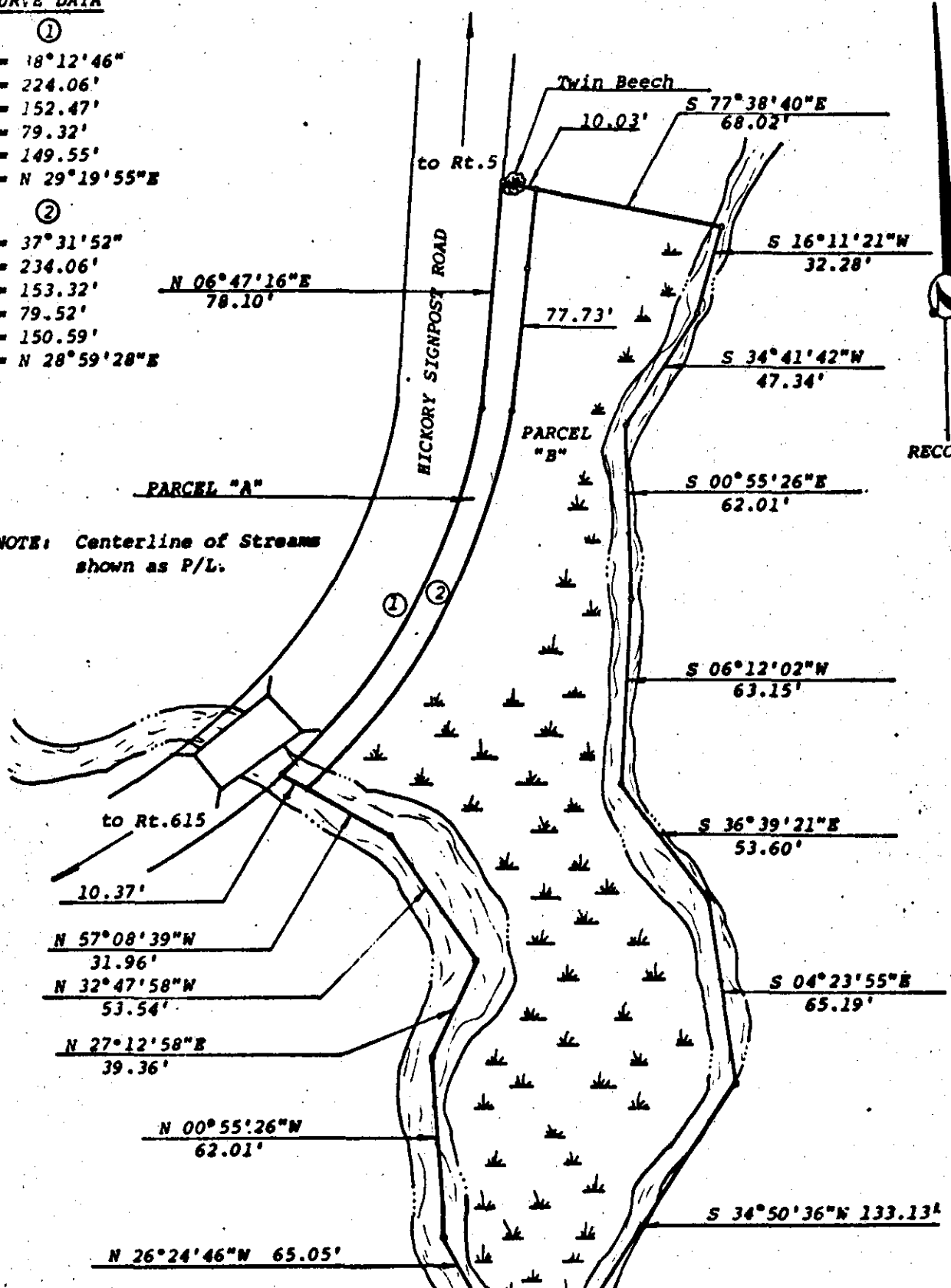
①

$\Delta = 18^{\circ}12'46''$
 $R = 224.06'$
 $L = 152.47'$
 $T = 79.32'$
 $C = 149.55'$
 $CB = N 29^{\circ}19'55''E$

②

$\Delta = 37^{\circ}31'52''$
 $R = 234.06'$
 $L = 153.32'$
 $T = 79.52'$
 $C = 150.59'$
 $CB = N 28^{\circ}59'28''E$

NOTE: Centerline of Streams shown as P/L.

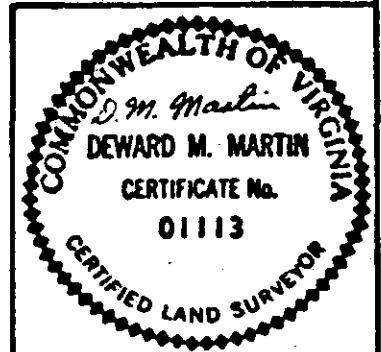


AREA TABULATION

PARCEL "A" = 2293 S.F. = .05 Ac.
 PARCEL "B" = 29759 S.F. = .69 Ac.
 TOTAL = 32051 S.F. = .74 Ac.

- NOTE: Parcel "A" to be dedicated for future widening of R/W.
- NOTE: Parcel "B" to be conveyed for Lift Station Site.
- NOTE: For further reference, see Plat of Estate of Eva Slade Rowe, January 1970, by Stephen Stephens.

Drwg. No. JO2-6A-1



DEWARD M. MARTIN & ASSOCIATES, INC.

TOANO, VIRGINIA

Legend ● = I.P. = Iron Pipe ◻ = Mon. = Monument — = P — = R/W - - - = Easement Lines

A Plat for Conveyance

To: James City County Sanitary District No. 3
 From: H. B. & MARGARET ELIZABETH SMITH

Scale: 1"=50' Ref: DB 45/384 Date: March 3, 1975 Area: Noted

Revised: August 4, 1975 bes
 Revised: October 17, 1975 bes