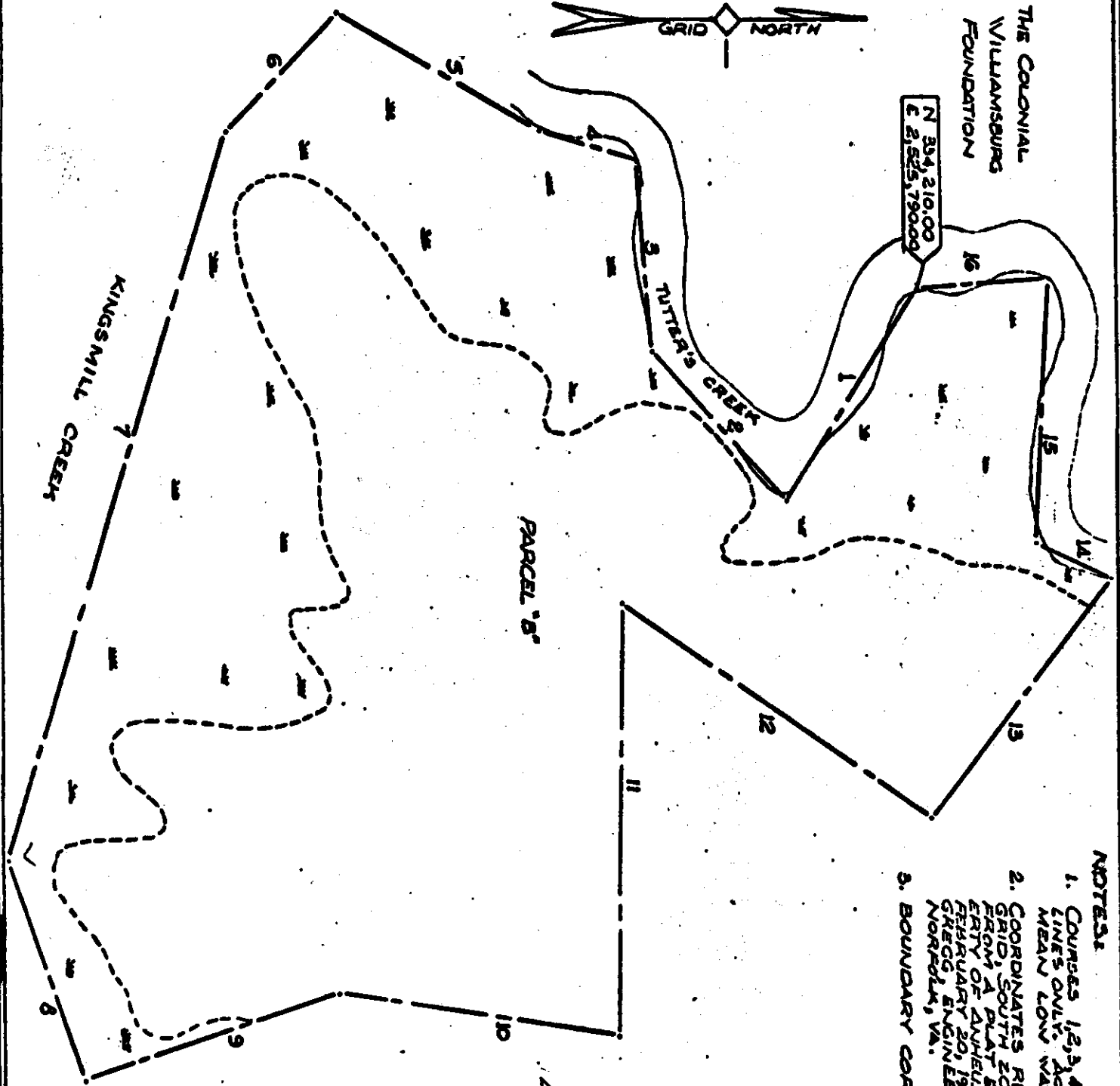




THE COLONIAL  
WILLIAMSBURG  
FOUNDATION

N 35° 21' 00"  
E 2,525.79000'



NOTES:

1. COURSES 1, 2, 3, 4, 14, 15, AND 16 ARE THE LINES ONLY. ACTUAL EASEMENT LINE IS MEAN LOW WATER LINE.
2. COORDINATES REFER TO VIRGINIA STATE GRID, SOUTH ZONE AND ARE CALCULATED FROM A PLAT ENTITLED "PLAT OF ADJOINED EASY OF ANHEUSER-BUSCH, INC." DATED FEBRUARY 20, 1970, BY BALDWIN AND GREGG ENGINEERS, SURVEYORS, PLANNERS, NORFOLK, VA.
3. BOUNDARY CORNERS NOT MONUMENTED.

NO.	BEARING	LENGTH
1	S 59° 04' 45" E	339.94'
2	S 48° 31' 56" W	266.92'
3	S 65° 50' 25" W	275.73'
4	S 17° 49' 08" W	147.05'
5	S 90° 23' 45" W	356.15'
6	S 46° 44' 09" E	239.45'
7	S 75° 03' 03" E	1097.68'
8	N 71° 01' 47" E	356.95'
9	N 18° 54' 16" W	385.61'
10	N 09° 13' 48" E	405.25'
11	N 89° 05' 00" W	625.08'
12	N 36° 09' 39" E	538.24'
13	N 52° 28' 18" W	435.03'
14	S 24° 26' 36" W	120.83'
15	N 87° 01' 34" W	365.52'
16	S 04° 30' 50" E	190.59'

ANHEUSER BUSCH, INC.



**LEGEND**  
 M MARSH  
 - - - - - EDGE OF MARSH  
 - - - - - EASEMENT LINE

**AREAS**

TOTAL AREA	30.45 ACRES
MARSH LAND	12.81 ACRES
DRY LAND	17.64 ACRES

PLAT OF PARCEL 'B' OVER WHICH ANHEUSER BUSCH, INCORPORATED WILL GRANT A SCENIC EASEMENT TO THE UNITED STATES OF AMERICA, REFERRED TO AS SCENIC EASEMENT 'B' IN THE AGREEMENT OF DECEMBER 5, 1969, BETWEEN ANHEUSER BUSCH, INCORPORATED, COLONIAL WILLIAMSBURG, INCORPORATED, AND WILLIAMSBURG RESTORATION INCORPORATED.

JAMES CITY CO., VA  
FEBRUARY 5, 1974

SCALE: 1" = 200'