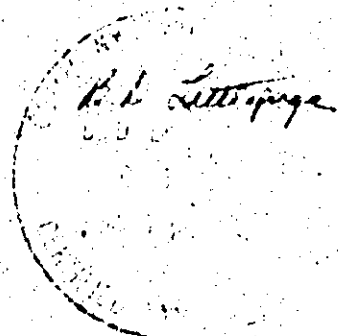
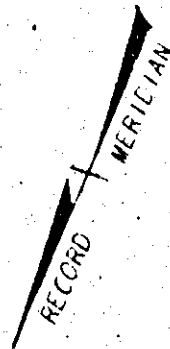
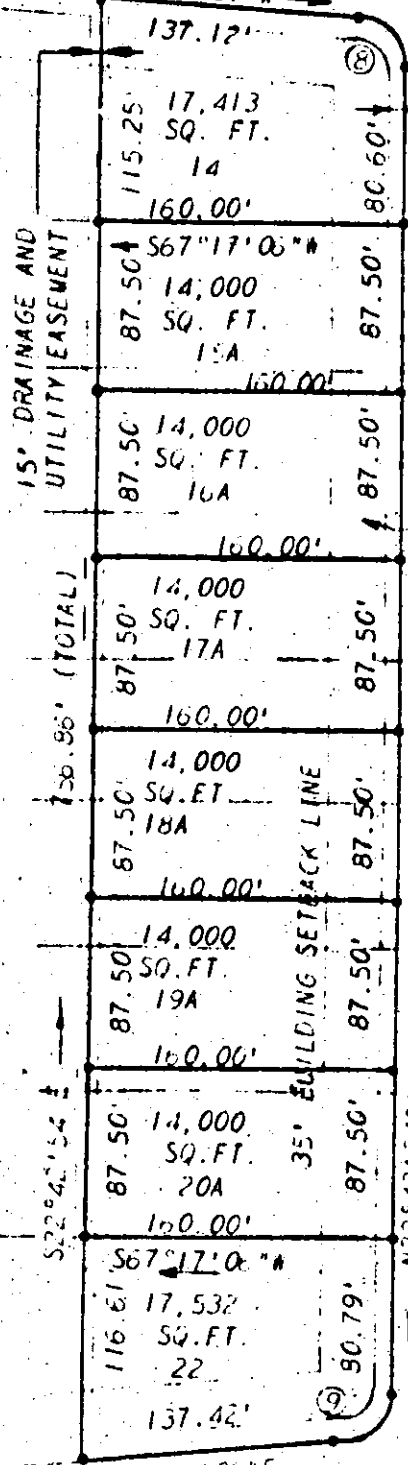


This subdivision is approved by the undersigned in accordance with existing subdivision regulations and may be recorded.

Signed: *Chas. A. Cooney*
 Date: *October 17, 1974*



RONDANE PLACE 60' R/W
 S71°21'01"W



15' DRAINAGE & UTILITY EASEMENT

FORMER LOT LINES SHOWN AS THUS

- Δ - 8' 50' 0"
- K - 25' 00"
- L - 37' 50"
- T - 23' 23"
- CH - 34' 08"
- CB - N. 0' 40' 11"

- L - 8' 57' 00"
- K - 25' 00"
- L - 37' 50"
- T - 23' 00"
- CH - 34' 08"
- CB - N. 0' 40' 11"

L. V. WOODSON & ASSOCIATES, INC. ENGINEERS, SURVEYORS & PLANNERS, P. O. BOX 633 WILLIAMSBURG, VIRGINIA 23185

LEGEND: ○ - IP - IRON PIN, □ - MON - MONUMENT, — — — - PROPERTY LINE, — — — — — - CENTERLINE, — — — — — - EASEMENT LINE

RESUBDIVISION OF LOTS 14-22, SECTION 1, KRISTIANSAN SUBDIVISION LYING IN POWHATAN DISTRICT, JAMES CITY COUNTY, VIRGINIA

SCALE: 1" = 100' REF: DATE: JULY 15, 1974 AREA: