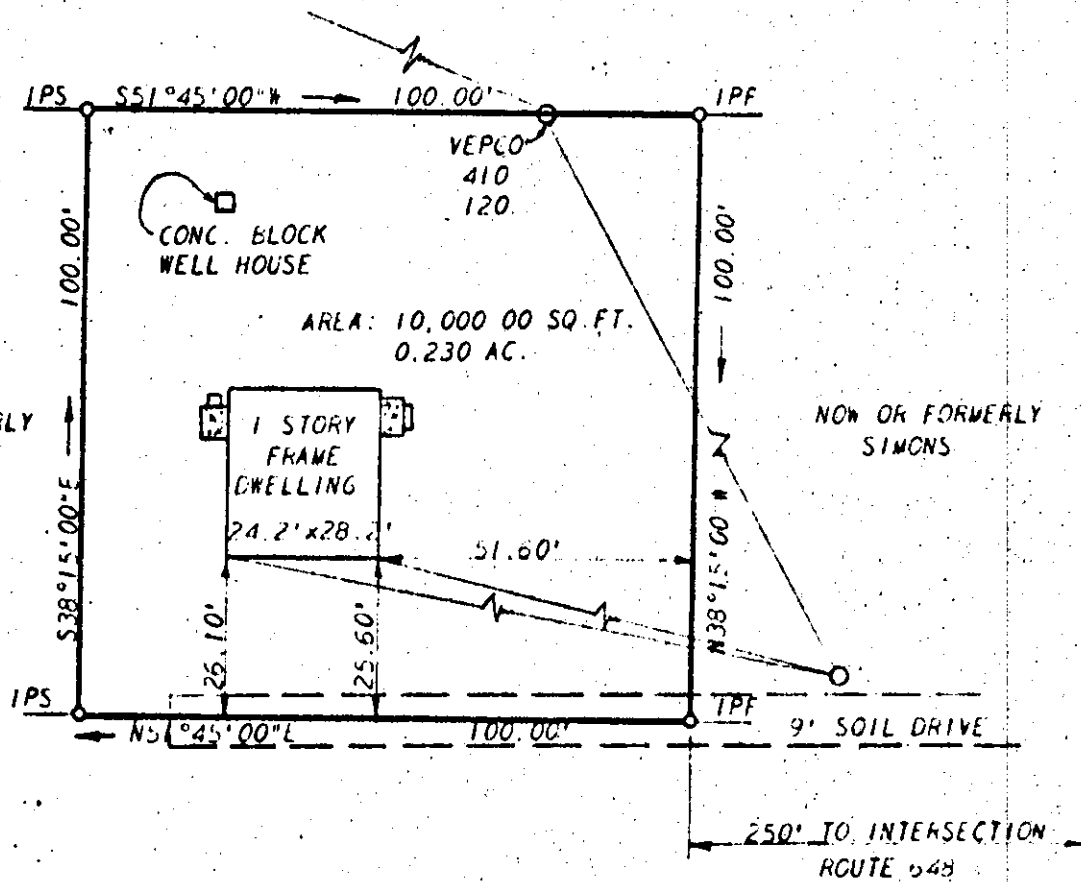


NOW OR FORMERLY HUMPHREY LEE



NOW OR FORMERLY BROWN

NOW OR FORMERLY SIMONS

AREA: 10,000.00 SQ. FT.
0.230 AC.

SEE VEPCO EASEMENTS
DB 89/600 AND DB 104/57

* DB 88/383; DB 37-137

L. V. WOODSON & ASSOCIATES, INC., ENGINEERS, SURVEYORS & PLANNERS, P. O. BOX 633 WILLIAMSBURG, VIRGINIA 23185

LEGEND ○ - IP - IRON PIN, □ - MON - MONUMENT, — - PROPERTY LINE, - - - - CENTERLINE, - · - · - EASEMENT LINE

A SURVEY OF PART OF THE SAMUEL BROWN ESTATE
FOR CONVEYANCE TO EDWARD AND EULA G. HADCLIFFE.
LYING IN ROBERTS DISTRICT, JAMES CITY COUNTY, VIRGINIA

SCALE: 1" = 30'

REF: *

DATE: JULY 11, 1974

AREA: 0.230 AC

J.O. 1853