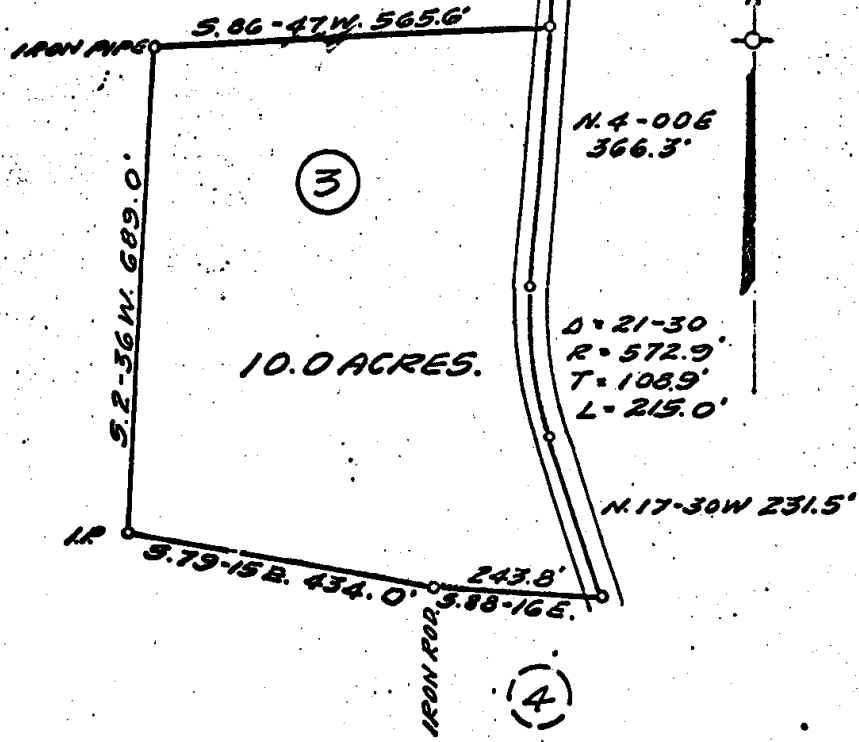


(2)

50' DIRT ROAD, P. MTE BOOK  
CONTINUES TO  
RTE. 601. SEE  
SUBDIVISION PLAT.



(3)

10.0 ACRES.

BARN.

(4)

PLAT OF LOT 3,  
SUBDIVISION OF  
SKILLMAN ESTATE  
POWHATAN DISTRICT  
JAMES CITY CO., VA  
SCALE 1" = 200' DEC. 4, 1975

