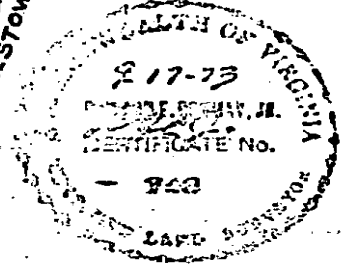
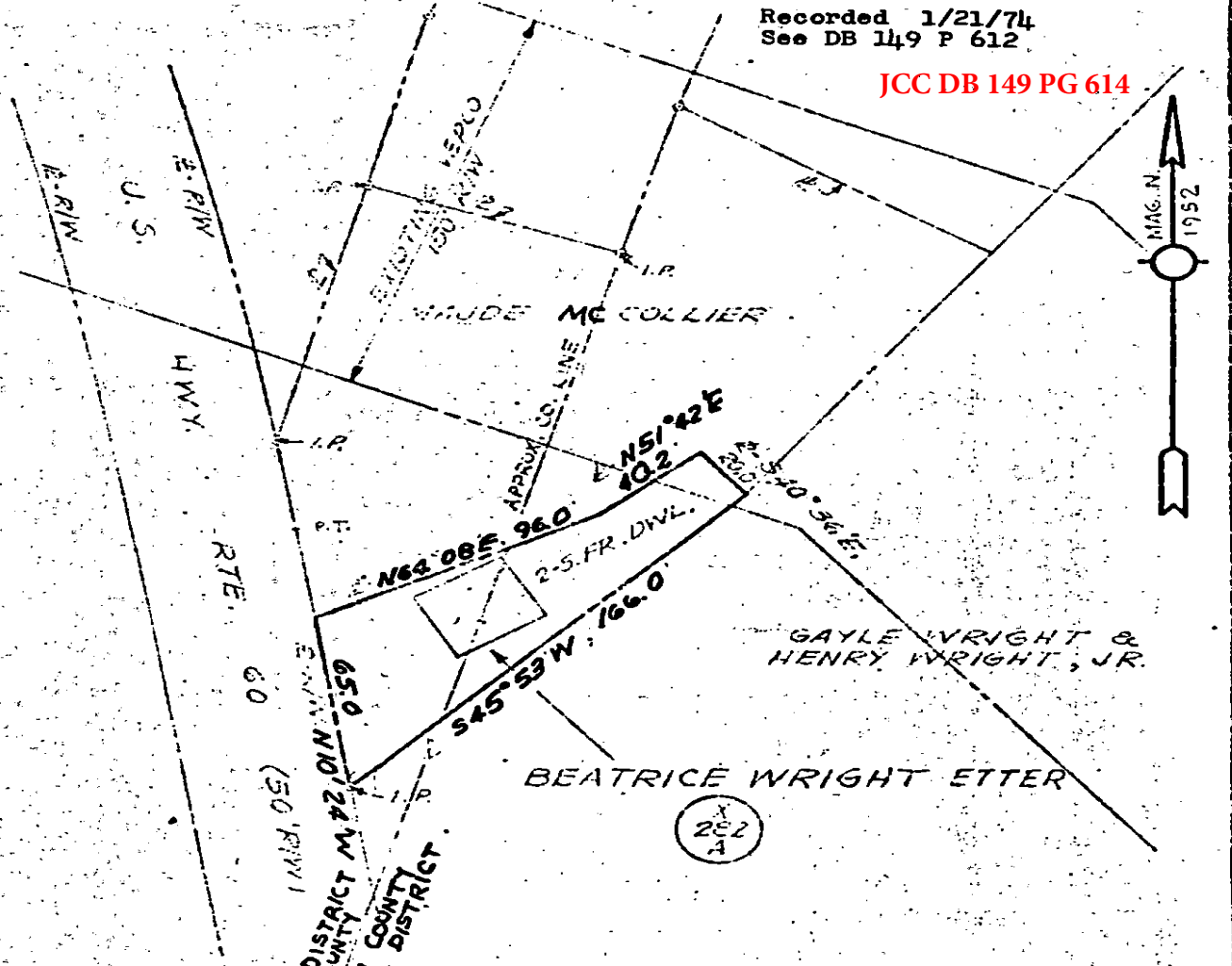


Recorded 1/21/74
See DB 149 P 612

JCC DB 149 PG 614



VIRGINIA ELECTRIC AND POWER COMPANY		
CHICKAHOMINY - SHIFFES CREEK		
PLAT TO ACCORDANCE DEED FROM BEATRICE WRIGHT ETTER		
DISTRICT	COUNTY	STATE
JAMESTOWN	JAMES CITY	VA.
SCALE: 1 INCH = 50 FT.		NO. A 282 A
DATE:	ENGINEERED BY:	
APR 17 1973	STONE & WEBSTER ENG. CORP.	

SHEET NO. 1
PLAT OF NO.