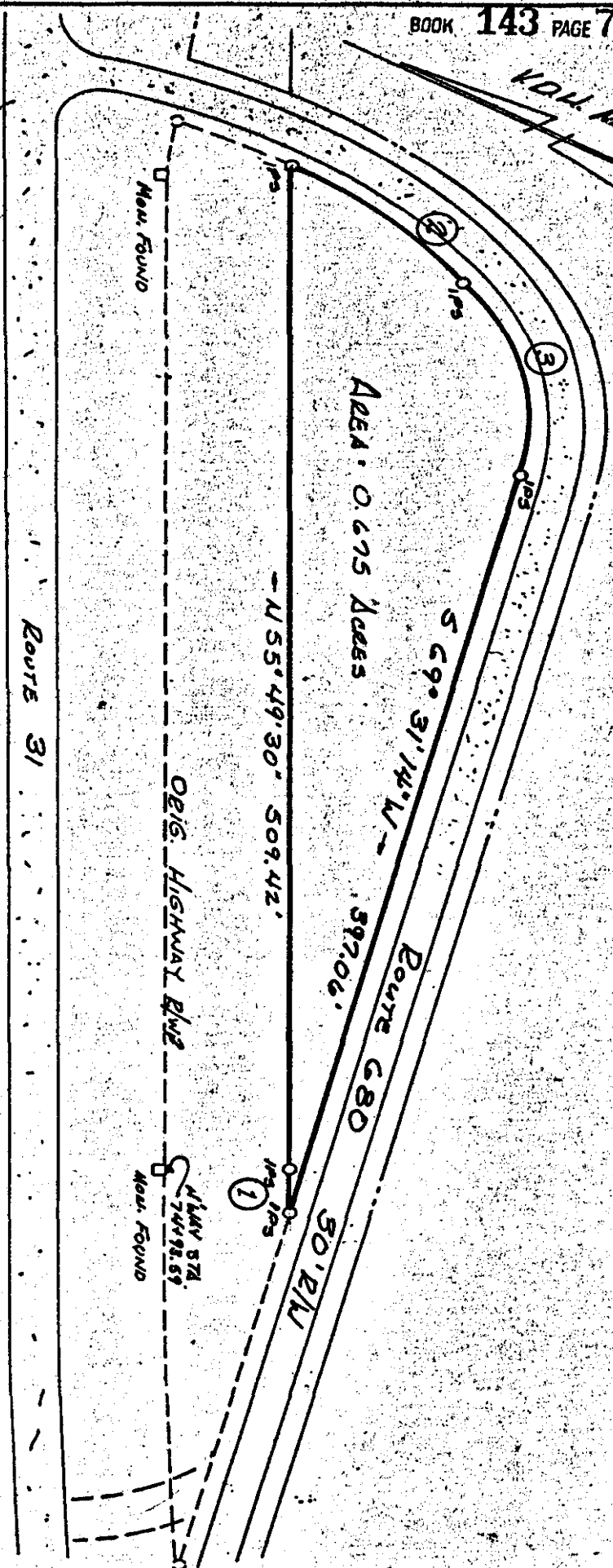


KOH. MESSINA



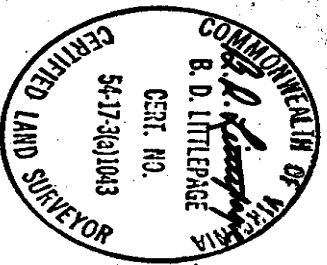
CURVE DATA						
#	Δ	P	L	T	CH.	CH. BEC.
1	00° 18' 34"	5629.58'	30.40'	15.20'	30.40'	N 56° 46' 13"E
2	19° 02' 36"	270.00'	92.88'	46.90"	92.42'	5 03° 29' 57"W
3	51° 32' 48"	114.61'	103.24'	58.42'	99.79'	5 43° 42' 50"W

Notes:

BEARINGS AND DISTANCES  
 READ PIPES & MOUNTAINS @ COURSES  
 AS SHOWN

REFERENCES:

- DB 3 / 1 PB 63/214
- DB 37/542
- DB 55/1290
- NWY PB 1/25



PLAT OF PROPERTY OF  
 F. L. FEJUANDEZ

JAMES TOWN DISTRICT, JAMES CITY COUNTY  
 VIRGINIA

Scale 1" = 60'  
 Revised Date Dec. 7, 1972