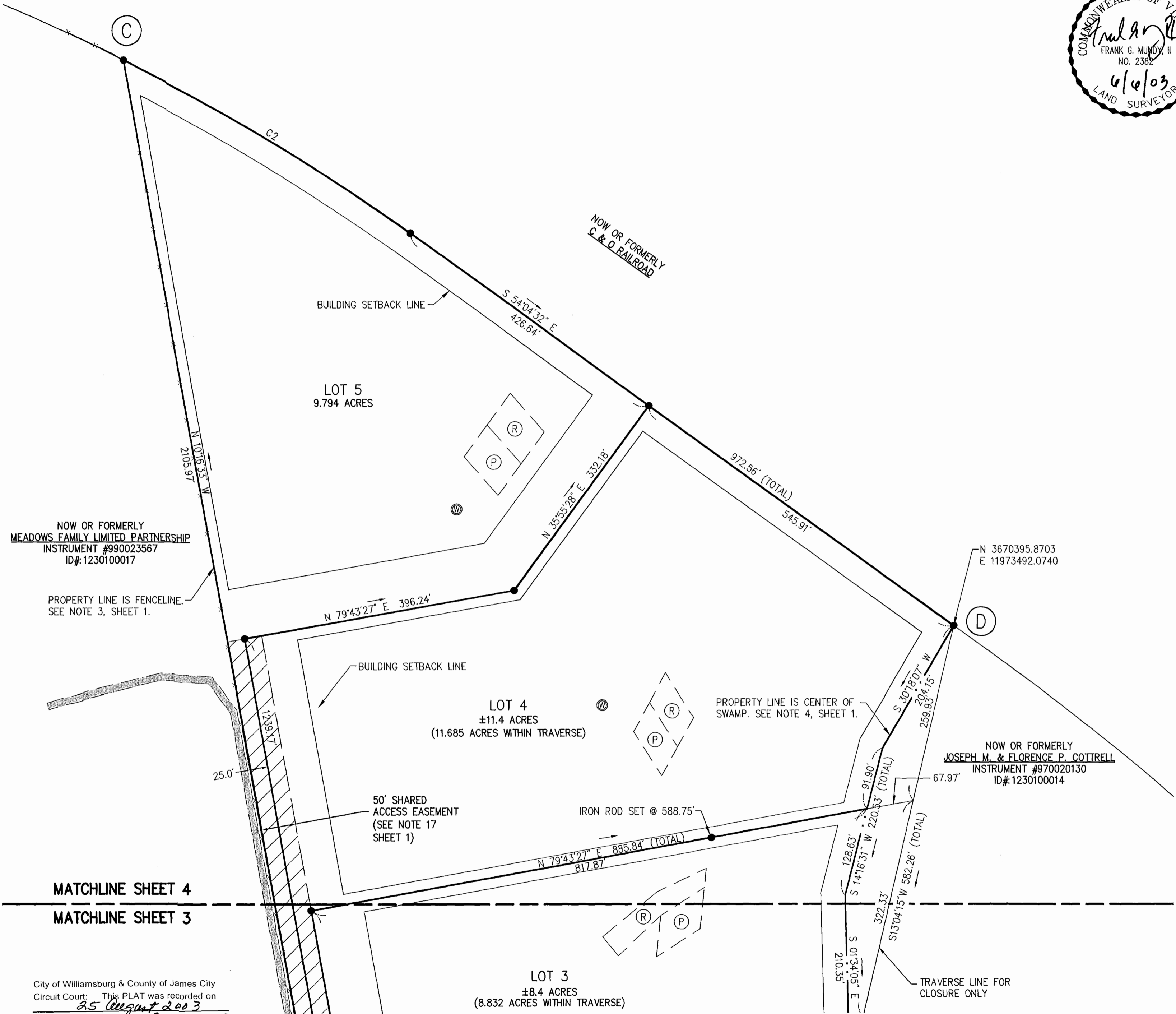
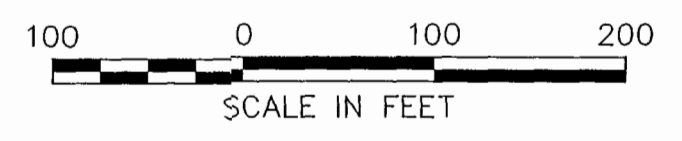


Sheet Notes

- 1.) SEE SHEET 1 FOR GENERAL NOTES.
- 2.) SEE SHEET 2 FOR LINE/CURVE TABLE.
- 3.) SEE SHEET 1 FOR AREA TABLE.

Legend

- IRON PIPE FOUND
- CONCRETE MONUMENT FOUND
- IRON ROD SET
- ⊙ APPROXIMATE WELL LOCATION
- ⊕ PRIMARY DRAINFIELD
- ⊖ RESERVE DRAINFIELD
- ▨ ACCESS EASEMENT
- ▨ DIRT ROAD
- × BARBED WIRE FENCE
- DRAINFIELD PER HEALTH DEPT.



NOW OR FORMERLY
MEADOWS FAMILY LIMITED PARTNERSHIP
INSTRUMENT #990023567
ID#: 1230100017

PROPERTY LINE IS FENCELINE.
SEE NOTE 3, SHEET 1.

LOT 4
±11.4 ACRES
(11.685 ACRES WITHIN TRAVERSE)

NOW OR FORMERLY
JOSEPH M. & FLORENCE P. COTTRELL
INSTRUMENT #970020130
ID#: 1230100014

LOT 3
±8.4 ACRES
(8.832 ACRES WITHIN TRAVERSE)

MATCHLINE SHEET 4

MATCHLINE SHEET 3

City of Williamsburg & County of James City
Circuit Court: This PLAT was recorded on
25 August 2003
at *12:53* AM/PM, PB. *91* PG. *36-39*
DOCUMENT # *030025250*
BETSY B. WOOLRIDGE, CLERK
Betsy B. Woolridge Clerk

Subdivision Plat
OF
Martin Farm Estates

Stonehouse District
James City County, Virginia

DATE : 12/17/02 SHEET 4 OF 4
PROJECT No. : 31340.00 DRAWN BY: RWP

VHB Vanasse Hangen Brustlin, Inc.
Transportation Land Development Environmental Services
477 McLaws Circle, Suite 1
Williamsburg, Virginia 23185-6316
(757) 220-0500 • FAX (757) 220-8544
FILE No. : 31340plat

REVISED: 6/6/03
REVISED: 3/20/03