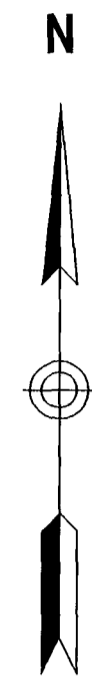
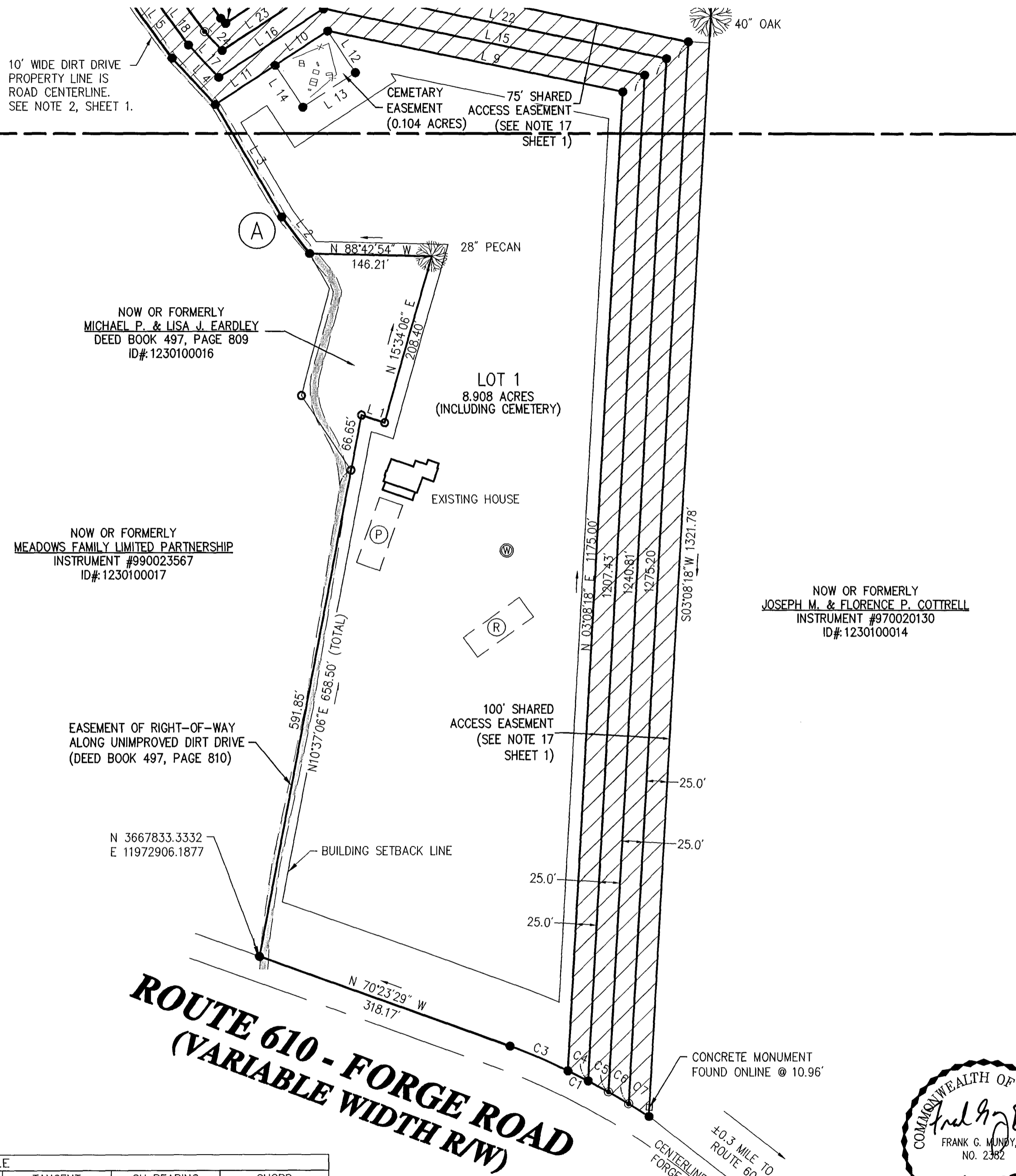


MATCHLINE SHEET 3
MATCHLINE SHEET 2



LINE TABLE		
LINE	BEARING	LENGTH
L 1	S72°04'54"E	29.17'
L 2	N36°34'10"W	55.90'
L 3	N30°43'32"W	156.04'
L 4	N42°47'36"W	76.11'
L 5	N36°14'43"W	97.04'
L 6	N27°23'31"W	62.44'
L 7	N19°24'54"W	84.97'
L 8	N49°01'49"W	30.11'
L 9	N78°18'03"W	360.87'
L 10	S56°30'49"W	75.00'
L 11	S56°30'49"W	85.53'
L 12	S33°29'11"E	60.30'
L 13	S56°30'49"W	75.00'
L 14	N33°29'11"W	60.30'
L 15	N78°18'03"W	392.79'
L 16	S56°30'49"W	149.70'
L 17	N42°47'36"W	53.44'
L 18	N36°14'43"W	93.68'
L 19	N27°23'31"W	58.76'
L 20	N19°24'54"W	89.84'
L 21	N49°01'49"W	27.93'
L 22	N78°18'03"W	424.72'
L 23	S56°30'49"W	138.87'
L 24	N42°47'36"W	30.77'
L 25	N36°14'43"W	90.31'
L 26	N27°23'31"W	55.08'
L 27	N19°24'54"W	94.71'
L 28	N49°01'49"W	25.74'
L 29	N78°18'03"W	456.64'
L 30	S56°30'49"W	128.03'
L 31	N42°47'36"W	8.11'
L 32	N36°14'43"W	86.95'
L 33	N27°23'31"W	51.40'
L 34	N19°24'54"W	99.57'
L 35	N49°01'49"W	23.56'

NOW OR FORMERLY
MEADOWS FAMILY LIMITED PARTNERSHIP
INSTRUMENT #990023567
ID#: 1230100017

EASEMENT OF RIGHT-OF-WAY
ALONG UNIMPROVED DIRT DRIVE
(DEED BOOK 497, PAGE 810)

N 3667833.3332
E 11972906.1877

100' SHARED
ACCESS EASEMENT
(SEE NOTE 17
SHEET 1)

NOW OR FORMERLY
JOSEPH M. & FLORENCE P. COTTRELL
INSTRUMENT #970020130
ID#: 1230100014

Sheet Notes

- 1.) SEE SHEET 1 FOR GENERAL NOTES.
- 2.) SEE SHEET 1 FOR AREA TABLE.

Legend

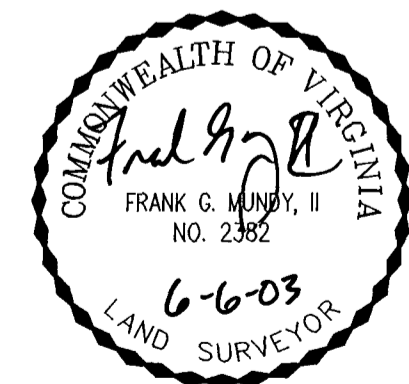
- IRON PIPE FOUND
- CONCRETE MONUMENT FOUND
- IRON ROD SET
- ⊙ APPROXIMATE WELL LOCATION
- Ⓟ PRIMARY DRAINFIELD
- Ⓡ RESERVE DRAINFIELD
- ▨ ACCESS EASEMENT
- ▩ DIRT ROAD
- x— BARBED WIRE FENCE
- DRAINFIELD PER HEALTH DEPT.



**ROUTE 610 - FORGE ROAD
(VARIABLE WIDTH RW)**

CURVE TABLE						
CURVE	DELTA	RADIUS	LENGTH	TANGENT	CH BEARING	CHORD
C1	12°23'14"	864.51'	186.90'	93.82'	N62°59'03"W	186.54'
C2	8°39'53"	3217.04'	486.51'	243.72'	S59°04'34"E	486.04'
C3	4°59'05"	864.51'	75.21'	37.63'	N66°41'08"W	75.19'
C4	1°48'28"	864.51'	27.28'	13.64'	N63°17'21"W	27.28'
C5	1°50'03"	864.51'	27.67'	13.84'	N61°28'06"W	27.67'
C6	1°51'49"	864.51'	28.12'	14.06'	N59°37'09"W	28.12'
C7	1°53'48"	864.51'	28.62'	14.31'	N57°44'21"W	28.62'

City of Williamsburg & County of James City
Circuit Court: This PLAT was recorded on
25 August 2003
at 12:53 AM/PM, PB 91 PG 36-39
DOCUMENT # 030025250
BETSY B. WOOLRIDGE, CLERK
Betsy B. Woolridge Clerk



**Subdivision Plat
OF
Martin Farm Estates**

**Stonehouse District
James City County, Virginia**

DATE : 12/17/02 SHEET 2 OF 4
PROJECT No. : 31340.00 DRAWN BY: RWP

VHB Vanasse Hangen Brustlin, Inc.
Transportation Land Development Environmental Services
477 McLaw's Circle, Suite 1
Williamsburg, Virginia 23185-6316
(757) 220-0500 • FAX (757) 220-8544

REVISED: 6/6/03
REVISED: 3/20/03

FILE No. : 31340plat