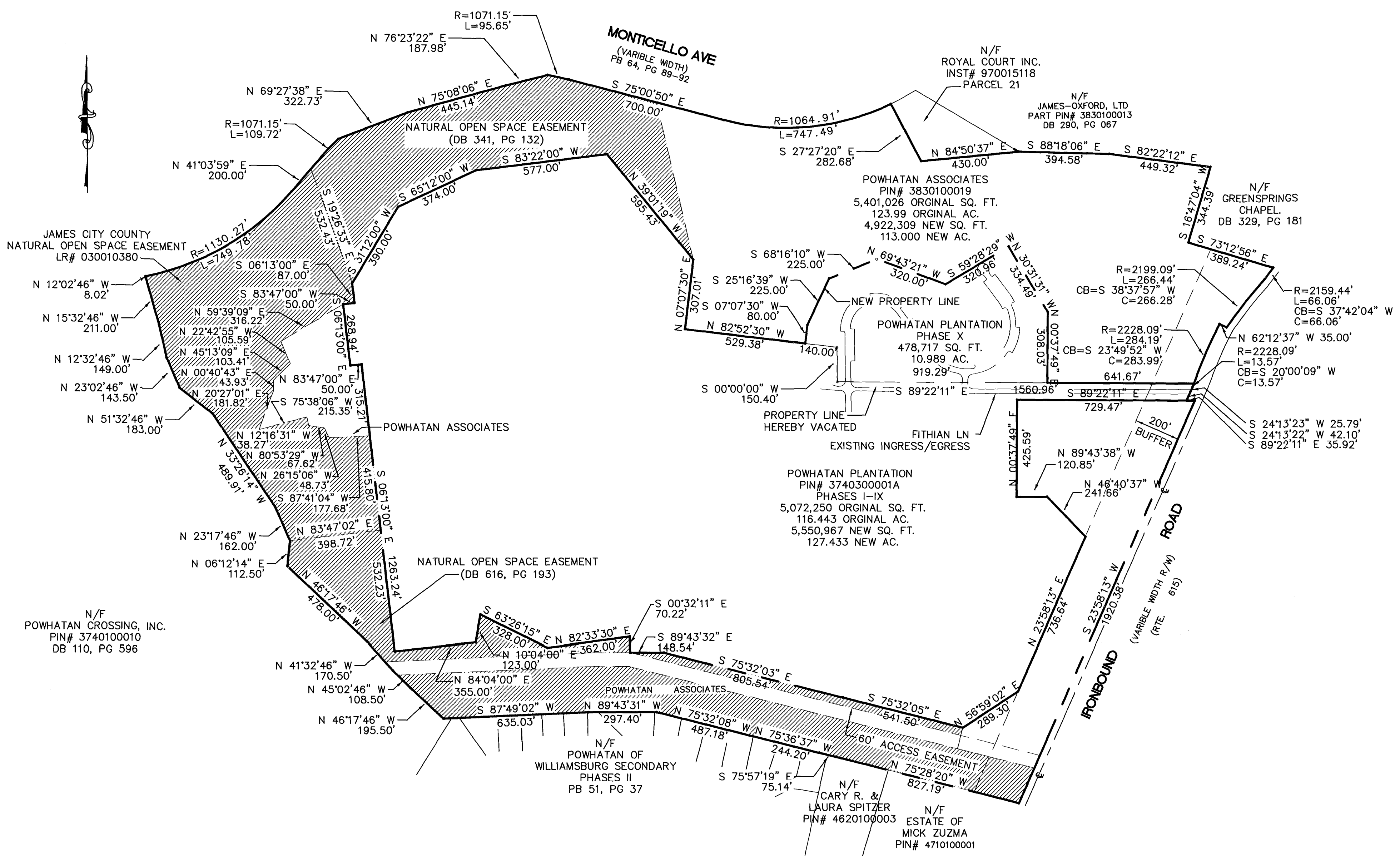
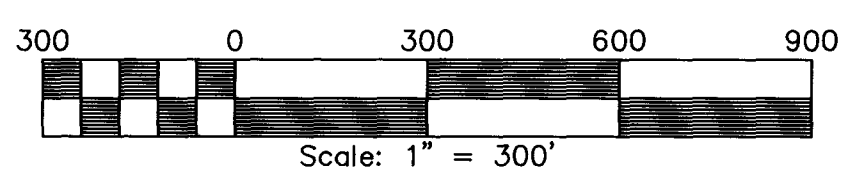


# SUBDIVISION PLAT POWHATAN PLANTATION PHASE X

BERKELEY DISTRICT  
JAMES CITY COUNTY, VIRGINIA



City of Williamsburg & County of James City  
 Circuit Court: This PLAT was recorded on  
21 August 2003  
 at 10:55 AM/PM PB 91 PG 30931  
 DOCUMENT # 130024746  
 BETSY B. WOOLRIDGE, CLERK  
*Betsy B. Woolridge* Clerk



REVISED AS PER COUNTY COMMENTS DATED 7/7/2003

SHEET 2 OF 2

**Rickmond Engineering, Inc.**  
 Engineering      Surveying      Land Planning  
 1643 Merrimac Trail      Vint Hill • P.O. Box 861647  
 Williamsburg, VA 23185      Warrenton, VA 20187  
 Voice: (757)229-1776      Voice: (540)349-7730  
 Fax: (757)229-4683      Fax: (540)349-7731  
 www.rickmond.com

Checked By: LDE	Drawn By: MCG	Scale: 1"=300'	Date: 5/14/03	Job No. 03159
--------------------	------------------	-------------------	------------------	------------------