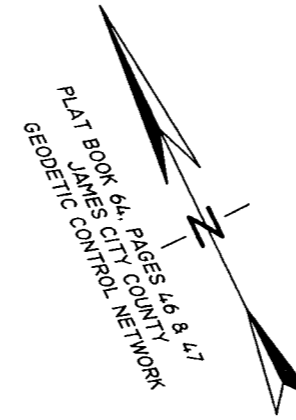
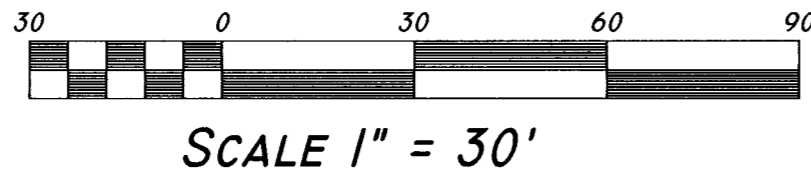
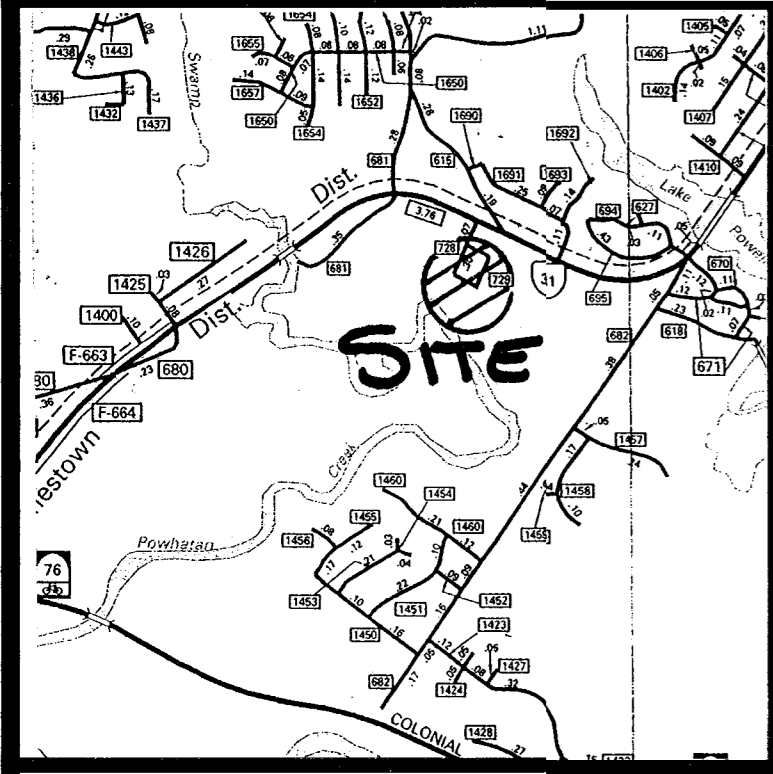


#030023527

91 PAGE 28



PLAT DESIGNATING PORTIONS
OF
RED OAK LANDING ROAD
AND
RALEIGH STREET
AS PUBLIC
RIGHT-OF-WAY

LOCATED: JAMESTOWN DISTRICT, JAMES CITY COUNTY, VIRGINIA
DATE: JULY 14, 2003 SCALE: 1" = 30'

MITCHELL-WILSON ASSOCIATES, P.C.
CIVIL ENGINEERS & LAND SURVEYORS
720 MAIN STREET, SUITE 112
P.O. BOX 1269
WEST POINT, VIRGINIA 23181
(804) 843-9744

VICINITY MAP

N/F
LOT 2
CHARLES S. FOLEY &
DONNA S. FOLEY SUBDIVISION
(47-3)(1-31A)
PB. 36, PG. 22
SAMUEL L. HODGES, JR.
DB. 213, PG. 78

STATE ROUTE 728

ALBERMARLE DRIVE 50' R/W
STATE ROUTE 729

END OF R/W
DESIGNATION

RALEIGH STREET

N/F
LOT 18
CALEB M. BRICKHOUSE
(47-3)(3-18)
DB. 170, PG. 675
DB. 96, PG. 41

N/F
LOT 17
EARL M. HEATH, JR.
(47-3)(3-17)
DB. 646, PG. 71
DB. 136, PG. 406

N/F
LOT 16
ROBERT A. BARRY
(47-3)(3-16)
DB. 174, PG. 652
DB. 104, PG. 172

N/F
LOT 15
P&W COMPANY
(47-3)(3-15)
DB 399, PG 732

N/F
NATURAL OPEN SPACE-
CONSERVATION EASEMENT
HOLLY RIDGE SUBDIVISION
(47-3)(23-1A)
HOLLY RIDGE HOME ASSOCIATION
DOC. #980020463
PB. 64, PGS. 46-47

N/F
LOT 1
CHARLES S. FOLEY &
DONNA S. FOLEY SUBDIVISION
(47-3)(1-31)
PB. 36, PG. 22
WILLIAM W. FISHER, II
DB. 552, PG. 86

10' DRAINAGE &
UTILITY EASEMENT

10' DRAINAGE & UTILITY
EASEMENT

N42°47'18"E

N03°36'29"E

RED OAK LANDING ROAD

END OF R/W
DESIGNATION

N64°09'34"W

N64°09'34"W

N64°09'34"W

N64°09'34"W

N64°09'34"W

N64°09'34"W

N64°09'34"W

N64°09'34"W

N64°09'34"W

N64°09'34"W

N64°09'34"W

N64°09'34"W

N64°09'34"W

N64°09'34"W

N64°09'34"W

N64°09'34"W

N64°09'34"W

N64°09'34"W

N64°09'34"W

N64°09'34"W

N64°09'34"W

N64°09'34"W

N64°09'34"W

N64°09'34"W

N64°09'34"W

N64°09'34"W

N/F
THOMAS C. & JOANNA C. TURBEVILLE
(47-3)(1-33)
DB. 742, PG. 676
DB. 84, PG. 90

N/F
PARCEL B
(47-3)(1-34)
WILLIAM E. HEWITT &
ANN J. HEWITT
DB. 496, PG. 112
PB. 52, PG. 42

N/F
PARCEL A
(47-3)(1-35)
EDWIN LINN THOMS
DOC. # 990012437
PB. 52, PG. 42

N/F
CHARLES R. WEIR
(47-3)(3-15A)
DB 607, PG 219

N/F
PARCEL "A"
(47-3)(9-1-4)
RALEIGH SQUARE
CONDOMINIUMS, INC.
DB. 243, PG. 841

CURVE DATA:

C2	DELTA = 91°17'57"	C3	DELTA = 90°00'00"
	RADIUS = 25.00'		RADIUS = 25.00'
	LENGTH = 39.83'		LENGTH = 39.27'
	TAN. = 25.57'		TAN. = 25.00'
	CHORD = 35.75'		CHORD = 35.36'
	CB = N71°28'54"E		CB = S19°00'54"E

City of Williamsburg & County of James City
Circuit Court: This PLAT was recorded on
7 August 2003
at 2:12 AM PM, PB 91 PG 28
DOCUMENT # 030023527
BETSY B. WOOLRIDGE, CLERK
Betsy B. Woolridge Clerk

