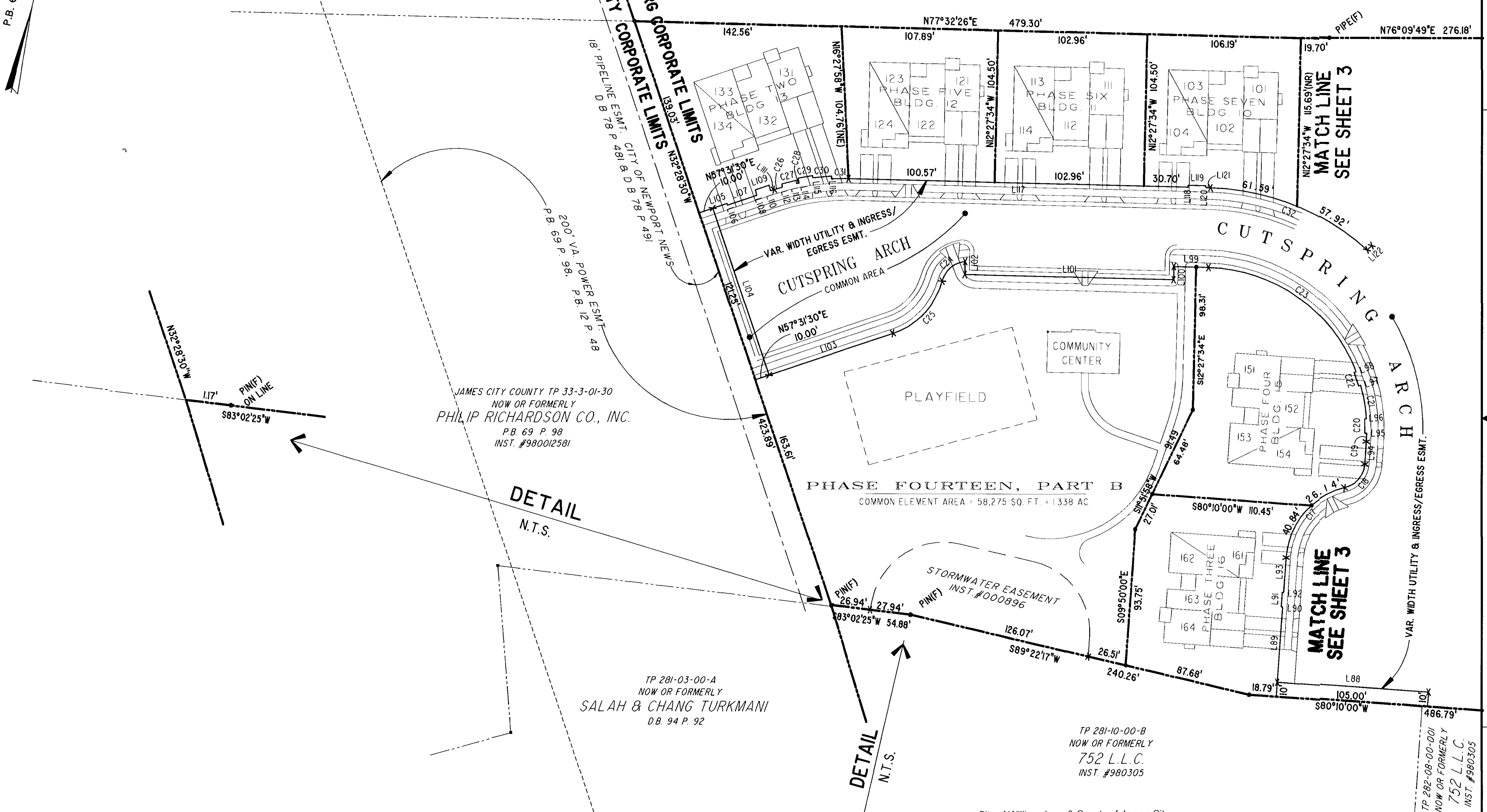


P.B. 69 - PG. 98

JAMES CITY COUNTY TP 33-3-01-27
NOW OR FORMERLY
ARTCRAFT - STRATFORD, L.C.
D.B. 649 P. 470

CITY OF WILLIAMSBURG CORPORATE LIMITS
JAMES CITY COUNTY CORPORATE LIMITS



JAMES CITY COUNTY TP 33-3-01-30
NOW OR FORMERLY
PHILIP RICHARDSON CO., INC.
P.B. 69 P. 98
INST. #980012581

DETAIL
N.T.S.

TP 281-03-00-A
NOW OR FORMERLY
SALAH & CHANG TURKMANI
D.B. 94 P. 92

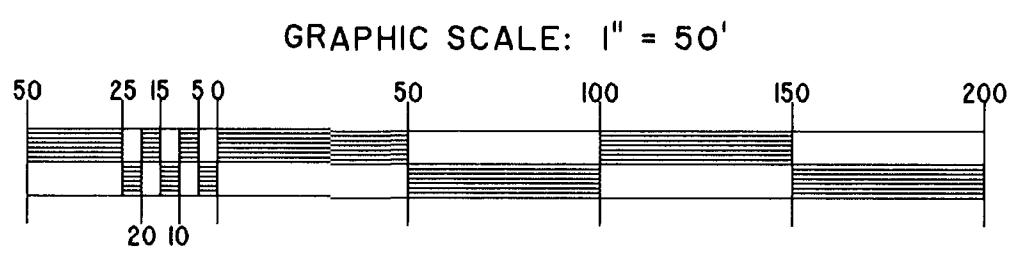
DETAIL
N.T.S.

TP 281-10-00-B
NOW OR FORMERLY
752 L.L.C.
INST. #980305

TP 282-08-00-001
NOW OR FORMERLY
752 L.L.C.
INST. #980305

City of Williamsburg & County of James City
Circuit Court: This PLAT was recorded on
at 2:49 AM PM, PB. 91 PG. 13-17
DOCUMENT # 031577
BETSY B. WOOLRIDGE, CLERK
Betsy B. Woolridge Clerk

EXHIBIT "A"
CLAIBORNE
(A CONDOMINIUM COMMUNITY)
PHASE FIFTEEN



Hassell & Folkes, P.C. Engineers Surveyors Planners Chesapeake, VA 23320 (757) 547-9531	SIZE C	CONTRACT NO.	FILE NAME S:\PLATS\CLAIBORNE\PH-15-BLDG-22.DWG	REV.
SCALE: 1" = 50'	DATE: 07/14/03	SHEET 4 of 5		