

**AREA TABULATION**

ALL OF TM(38-1)(1-8)	290,048 S.F.±	OR 6.659 AC.±
PORTION OF TM(38-3)(1-34)	3,927,436 S.F.±	OR 90.161 AC.±
ALL OF TM(38-3)(2-18)	396,880 S.F.±	OR 9.111 AC.±
<b>TOTAL</b>	<b>4,614,364 S.F.±</b>	<b>OR 105.931 AC.±</b>

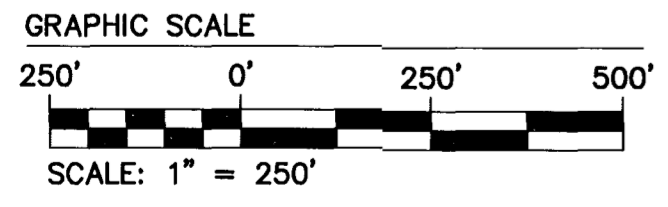
**NOTE:**  
LIMITS OF WETLANDS AS SHOWN WERE DELINEATED BY WILLIAMSBURG ENVIRONMENTAL GROUP, INC. AND FIELD LOCATED BY AES CONSULTING ENGINEERS.

**LINE TABLE**

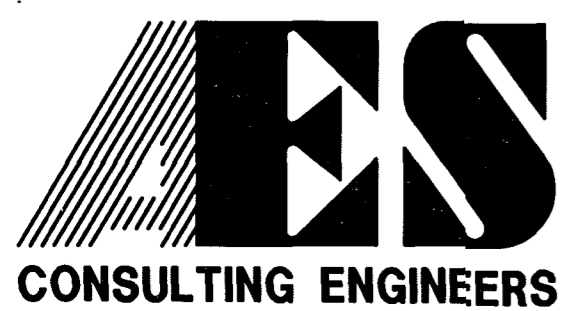
NUMBER	BEARING	DISTANCE
L1	N47°50'20\"W	189.28'
L2	S42°09'40\"W	148.49'
L3	N35°50'20\"W	102.23'
L4	N42°09'40\"E	127.74'
L5	N39°30'44\"W	200.24'
L6	N36°07'45\"W	84.10'
L7	N35°43'50\"E	67.04'
L8	N33°46'03\"E	11.28'
L9	N56°13'57\"W	30.16'

**CURVE DATA**

NUMBER	DELTA	RADIUS	LENGTH	TANGENT	CHORD	CH. BEARING
C1	07°41'16\"	5894.58	790.92	396.05	790.32	S00°05'29\"W
C2	04°39'08\"	2035.00	165.24	82.66	165.19	S20°05'11\"E
C3	11°10'07\"	2165.00	422.02	211.68	421.35	S16°49'41\"E
C4	78°00'00\"	25.00	34.03	20.24	31.47	S03°09'40\"W
C5	102°00'00\"	25.00	44.51	30.87	38.86	S86°50'20\"E



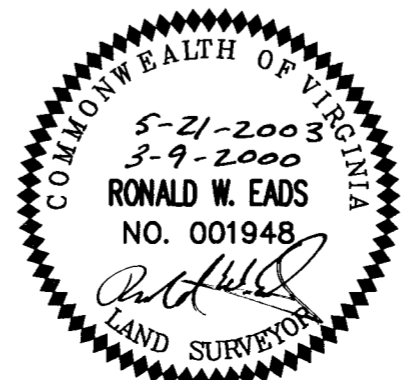
12.03.01-09.48 8818BNDY.DWG RMS



5248 Olde Towne Road, Suite 1  
Williamsburg, Virginia 23188  
(757) 253-0040  
Fax (757) 220-8994

**PLAT OF SUBDIVISION  
AND PROPERTY LINE EXTINGUISHMENT  
ON PROPERTY BEING 105.931 ACRES±  
OWNED BY  
C.C. CASEY LIMITED COMPANY**

BERKELEY DISTRICT      JAMES CITY COUNTY      VIRGINIA



City of Williamsburg & County of James City  
Circuit Court: This PLAT was recorded on July 23, 2003  
at 3:17 AM (PM) PB 91 PG 11/12  
DOCUMENT # 030021861  
BETSY B. WOOLRIDGE, CLERK  
Betsy B. Woolridge Clerk

No.	DATE	REVISION / COMMENT / NOTE	BY
1.	12/11/00	REVD. NOTES SHT.1 PER J.C.CO. COMMENTS	RWE

Designed AES	Drawn JKR
Scale 1"=250'	Date 3/9/2000
Project No. 8818-1	
Drawing No. 2 OF 2	