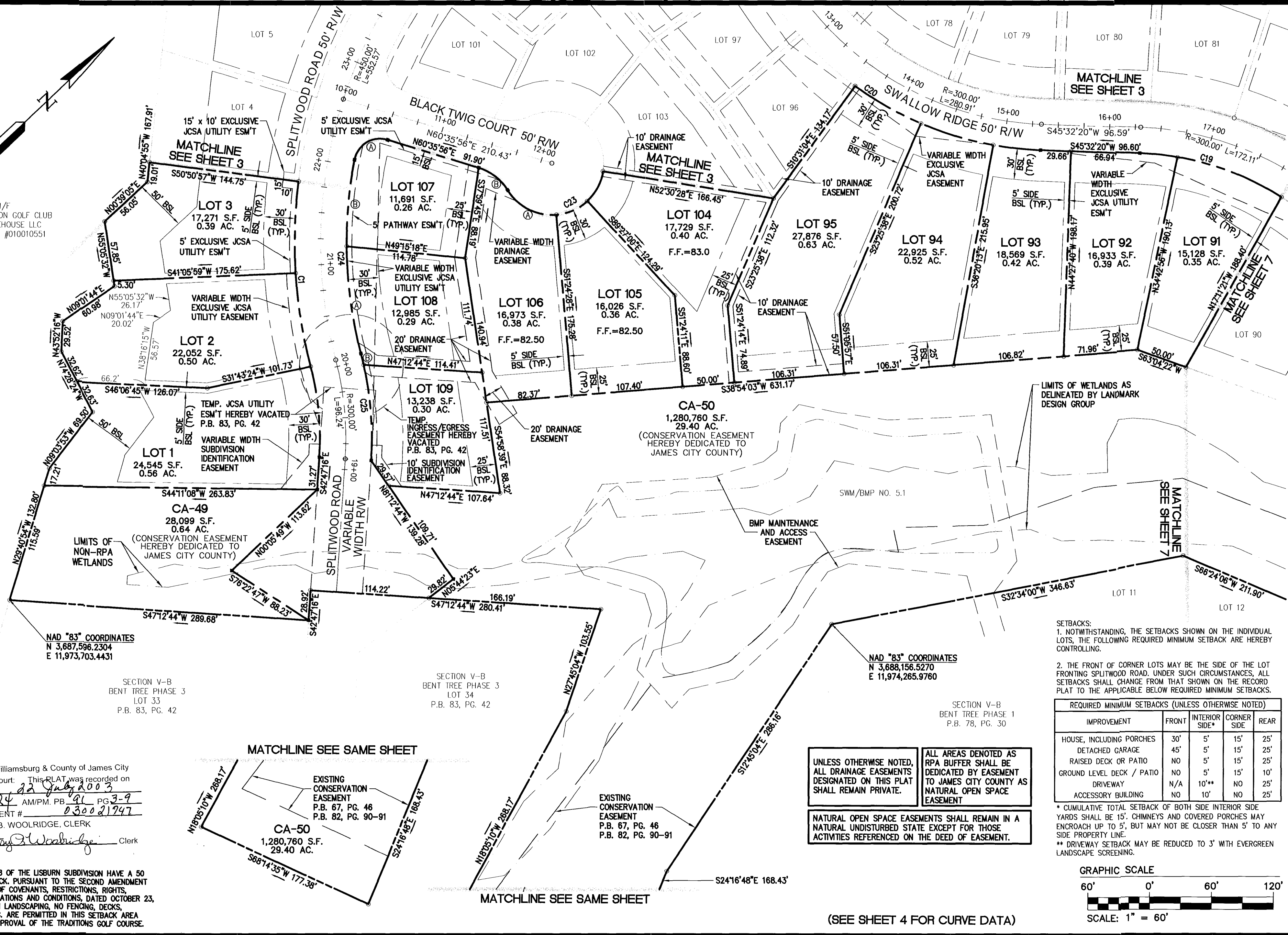


N/F THE TRADITION GOLF CLUB AT STONEHOUSE LLC DOCUMENT #010010551



NAD '83' COORDINATES N 3,687,596.2304 E 11,973,703.4431

SECTION V-B BENT TREE PHASE 3 LOT 33 P.B. 83, PG. 42

SECTION V-B BENT TREE PHASE 3 LOT 34 P.B. 83, PG. 42

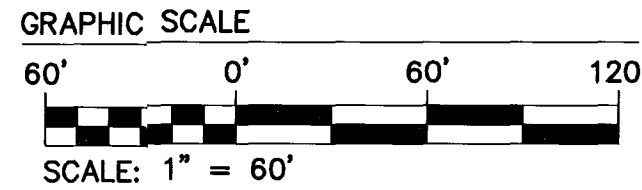
NAD '83' COORDINATES N 3,688,156.5270 E 11,974,265.9760

SECTION V-B BENT TREE PHASE 1 P.B. 78, PG. 30

- SETBACKS: 1. NOTWITHSTANDING, THE SETBACKS SHOWN ON THE INDIVIDUAL LOTS, THE FOLLOWING REQUIRED MINIMUM SETBACK ARE HEREBY CONTROLLING. 2. THE FRONT OF CORNER LOTS MAY BE THE SIDE OF THE LOT FRONTING SPLITWOOD ROAD...

Table with 5 columns: IMPROVEMENT, FRONT, INTERIOR SIDE*, CORNER SIDE, REAR. Rows include HOUSE, DETACHED GARAGE, RAISED DECK OR PATIO, GROUND LEVEL DECK / PATIO, DRIVEWAY, ACCESSORY BUILDING.

* CUMULATIVE TOTAL SETBACK OF BOTH SIDE INTERIOR SIDE YARDS SHALL BE 15'. CHIMNEYS AND COVERED PORCHES MAY ENCRoACH UP TO 5', BUT MAY NOT BE CLOSER THAN 5' TO ANY SIDE PROPERTY LINE.

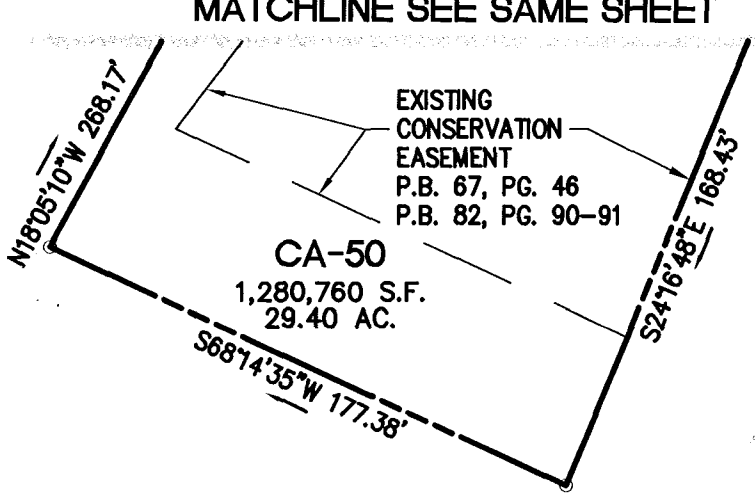


UNLESS OTHERWISE NOTED, ALL DRAINAGE EASEMENTS DESIGNATED ON THIS PLAT SHALL REMAIN PRIVATE. ALL AREAS DENOTED AS RPA BUFFER SHALL BE DEDICATED BY EASEMENT TO JAMES CITY COUNTY AS NATURAL OPEN SPACE EASEMENT

NATURAL OPEN SPACE EASEMENTS SHALL REMAIN IN A NATURAL UNDISTURBED STATE EXCEPT FOR THOSE ACTIVITIES REFERENCED ON THE DEED OF EASEMENT.

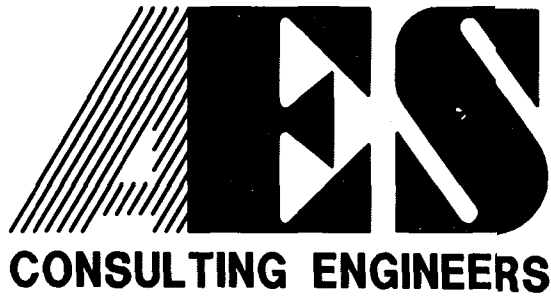
(SEE SHEET 4 FOR CURVE DATA)

City of Williamsburg & County of James City Circuit Court: This PLAT was recorded on 22 July 2003 at 3:24 AM/PM. PB 91 PG 3-9 DOCUMENT # 030021747 BETSY B. WOOLRIDGE, CLERK



NOTE: LOTS 1 THROUGH 8 OF THE LISBURN SUBDIVISION HAVE A 50 FOOT REAR SETBACK, PURSUANT TO THE SECOND AMENDMENT TO DECLARATION OF COVENANTS, RESTRICTIONS, RIGHTS, AFFIRMATIVE OBLIGATIONS AND CONDITIONS, DATED OCTOBER 23, 2001, OTHER THAN LANDSCAPING, NO FENCING, DECKS, OUTBUILDINGS, ETC. ARE PERMITTED IN THIS SETBACK AREA WITHOUT PRIOR APPROVAL OF THE TRADITIONS GOLF COURSE.

AWT 04.15.03-07:59 9088-P02.dwg



5248 Olde Towne Road, Suite 1 Williamsburg, Virginia 23188 (757) 253-0040 Fax (757) 220-8994

PLAT OF SUBDIVISION SECTION V-A 'LISBURN' AT STONEHOUSE FOR G.C.R., INC. STONEHOUSE DISTRICT JAMES CITY COUNTY VIRGINIA



Revision table with columns: No., DATE, REVISION / COMMENT / NOTE, BY

Project information table: Designed VMB, Drawn AWT, Scale 1"=60', Date 12/3/02, Project No. 9088, Drawing No. 2 OF 7