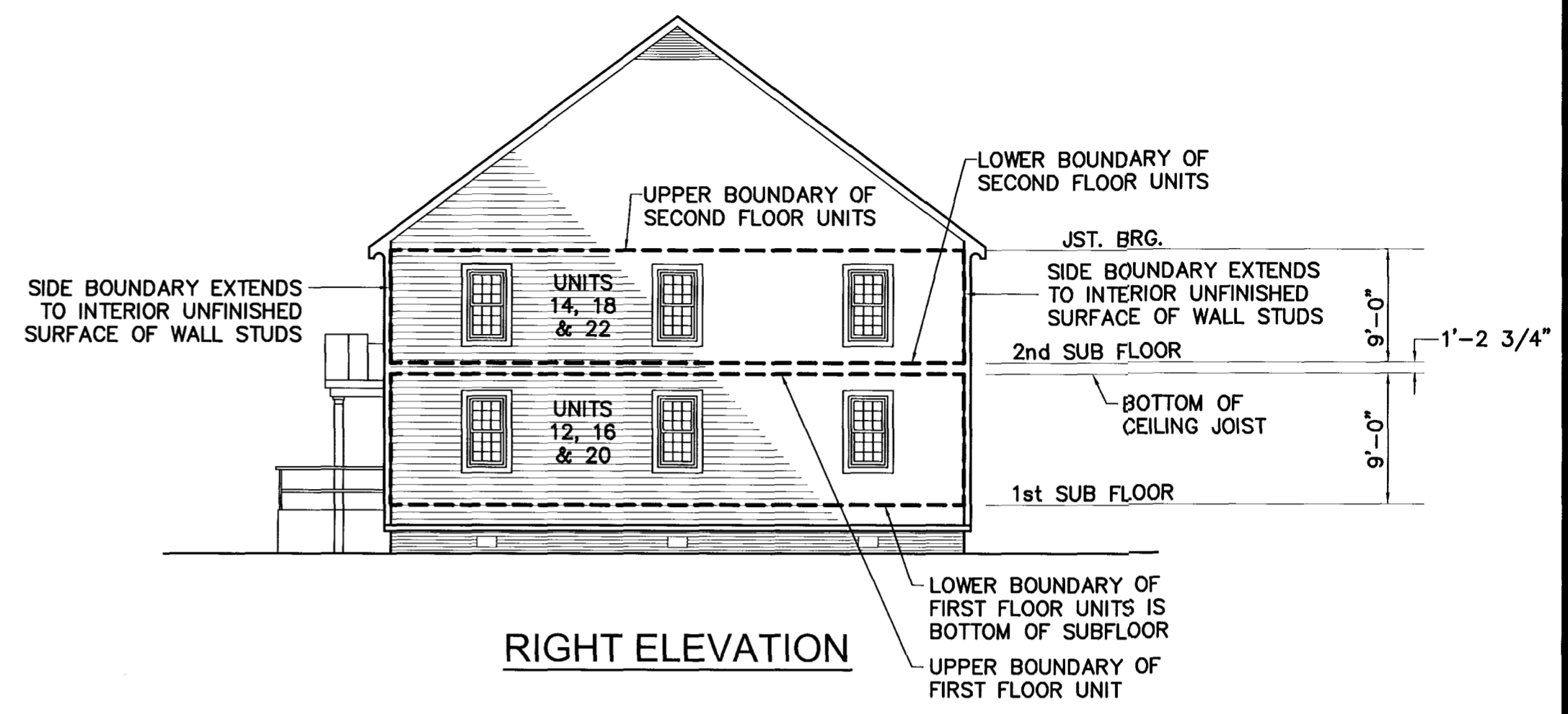


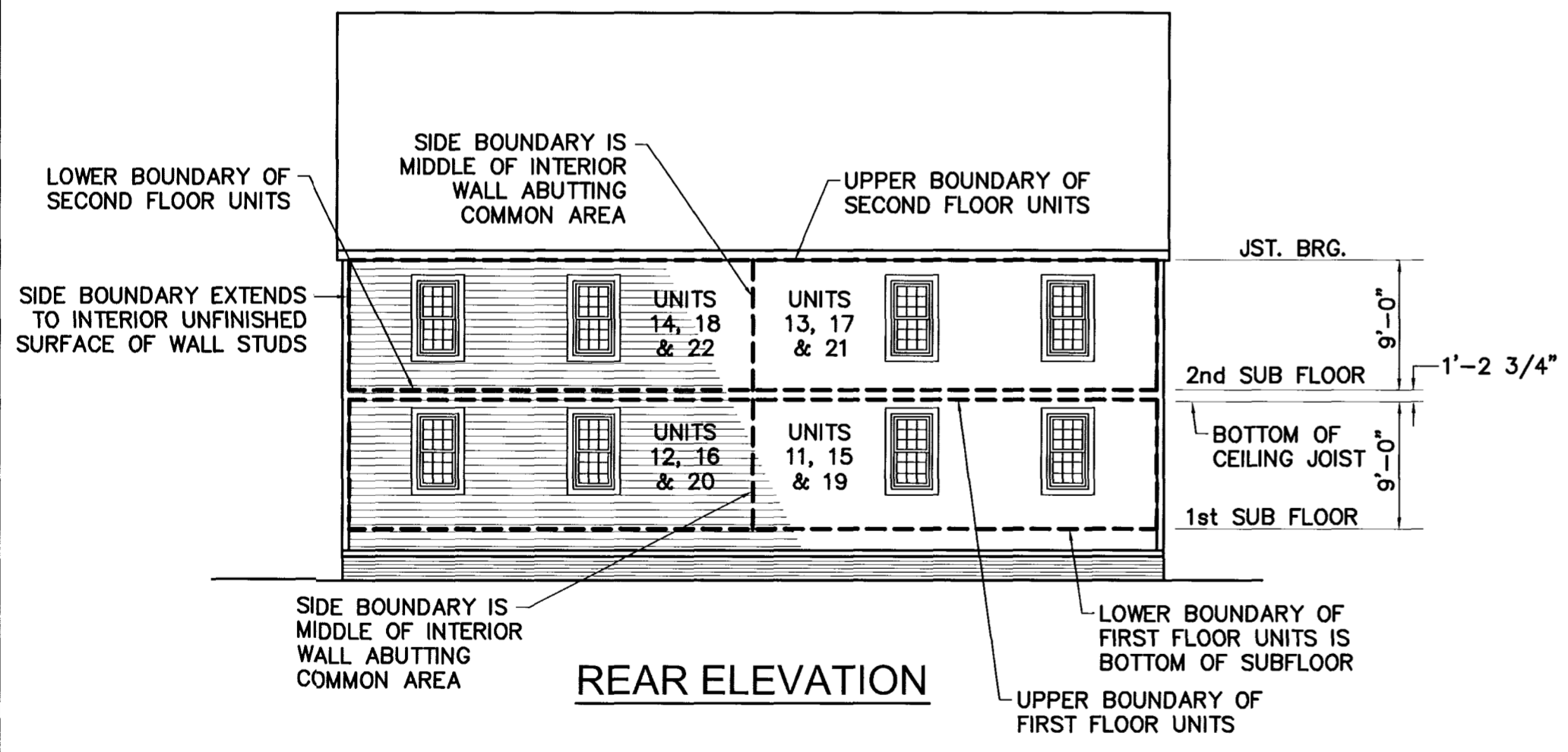
FRONT ELEVATION



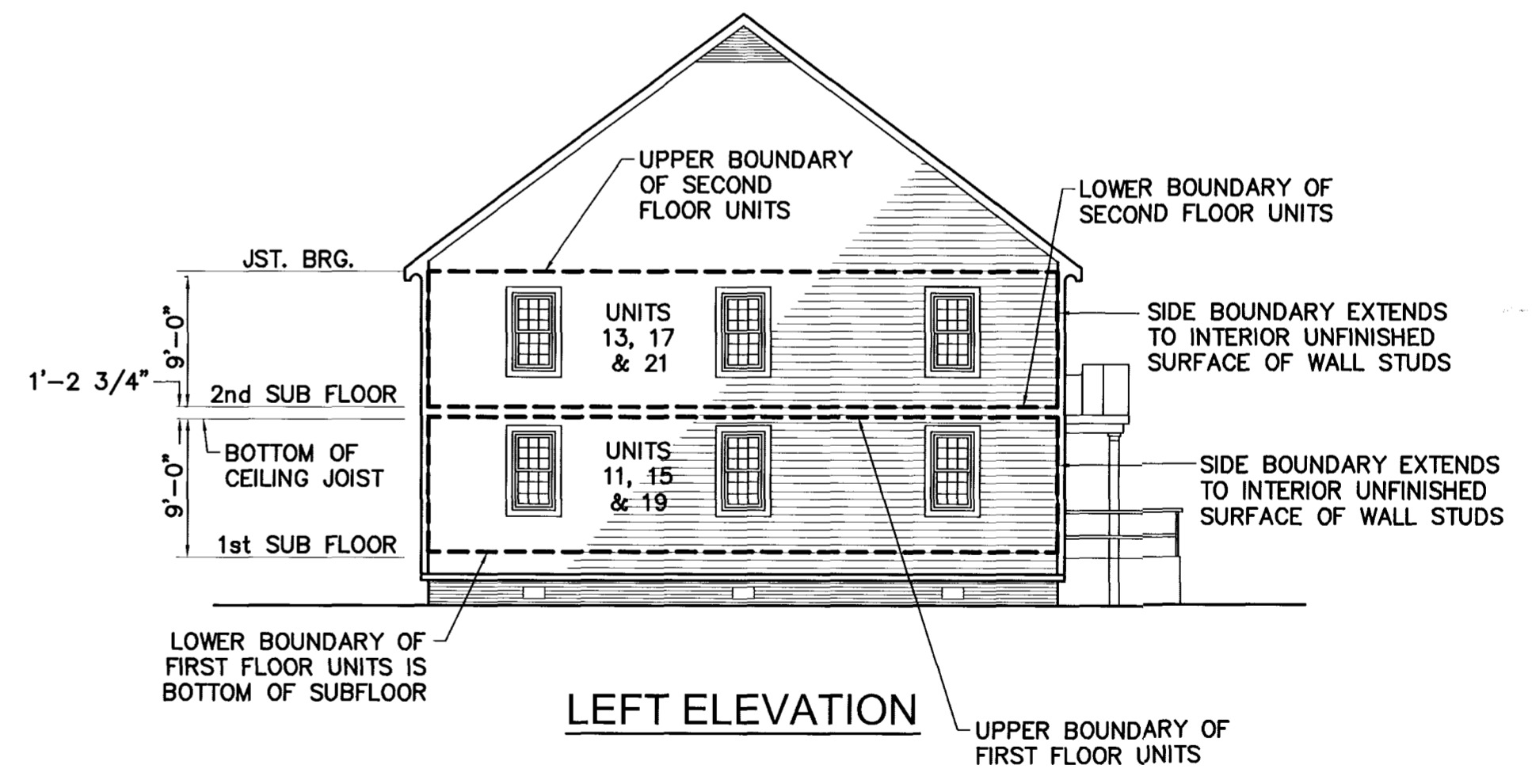
RIGHT ELEVATION

NOTE:
FINISHED FLOOR ELEVATION AND LOWER BOUNDARY ELEVATIONS
ARE REFERENCED TO JAMES CITY COUNTY GEODETIC DATUM.

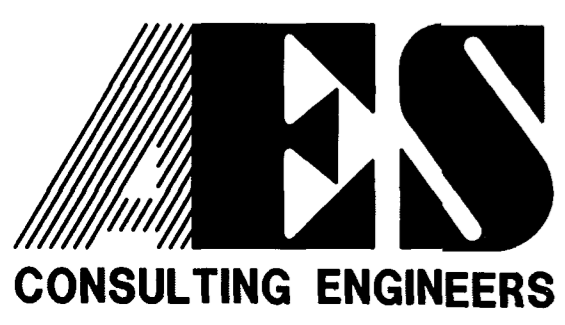
BUILDING	FLOOR	UNITS	FINISHED FLOOR ELEVATION	LOWER BOUNDARY ELEVATION
D	FIRST	11,12	101.10	101.04
	SECOND	13,14		111.27
E	FIRST	15,16	98.25	98.19
	SECOND	17,18		108.42
F	FIRST	19,20	94.25	94.19
	SECOND	21,22		104.42



REAR ELEVATION



LEFT ELEVATION



5248 Olde Towne Road, Suite 1
Williamsburg, Virginia 23188
(757) 253-0040
Fax (757) 220-8994

REVISIONS TO
PLAT OF CONDOMINIUM
WILLIAMSBURG BUSINESS
CENTER : A CONDOMINIUM
PHASE II
POWHATAN DISTRICT JAMES CITY COUNTY VIRGINIA

No.	DATE	REVISION / COMMENT / NOTE	BY

City of Williamsburg & County of James City
Circuit Court: This PLAT was recorded on
18 Feb 2003
at 9:38 AM/PM: PB 90 PG 97-104
DOCUMENT # 030021218
BETSY B. WOOLRIDGE, CLERK
Betsy Woolridge Clerk

Designed VMB	Drawn AWT
Scale 1/4"=1'	Date 5/18/03
Project No. 8102	
Drawing No. INSERT	