

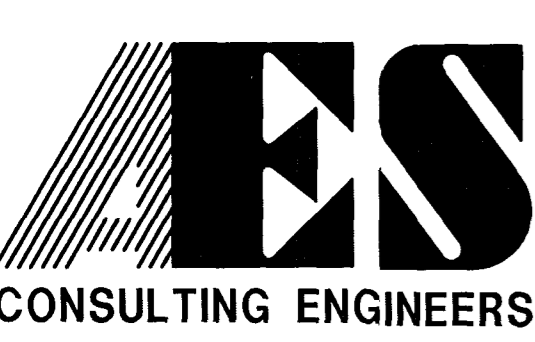
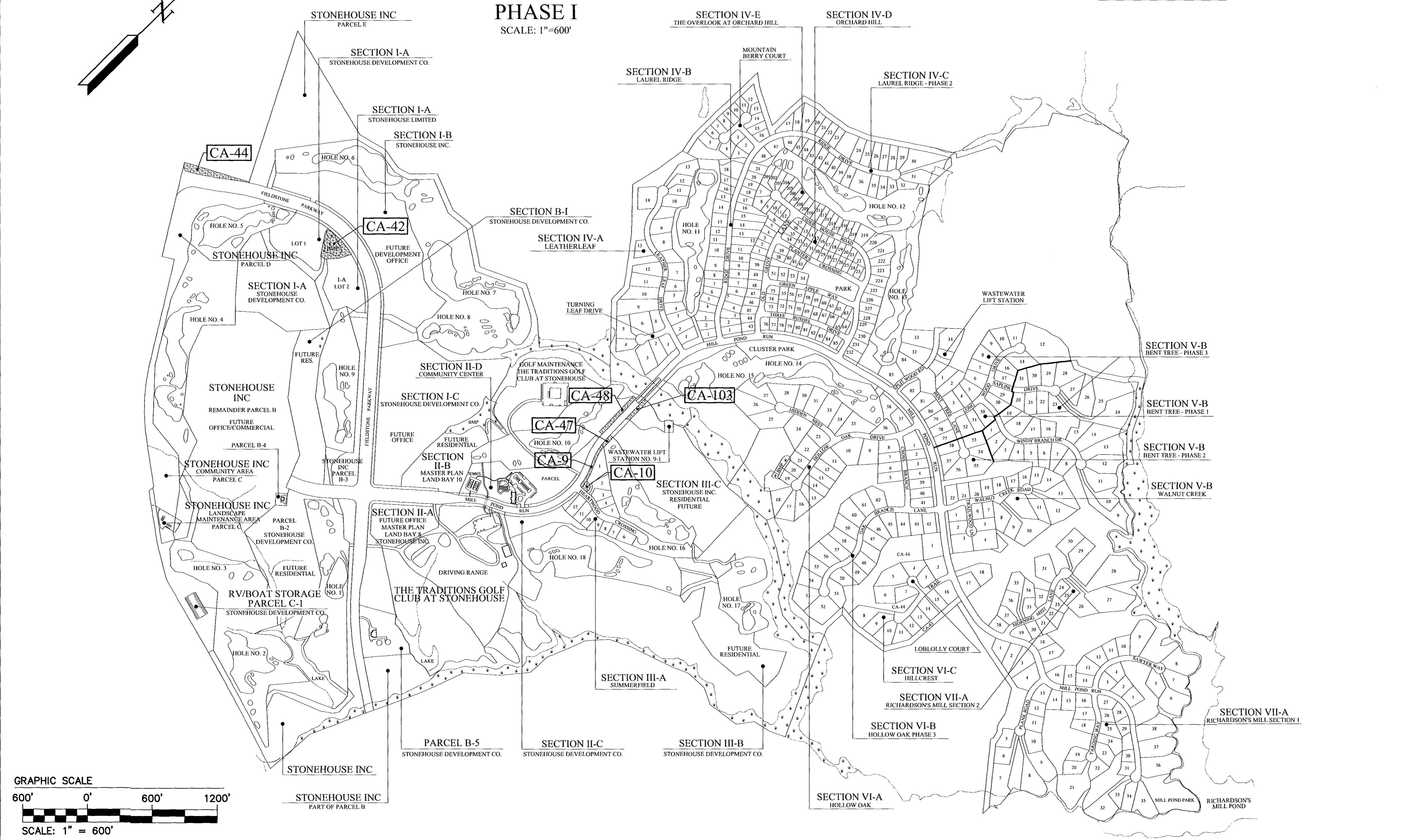
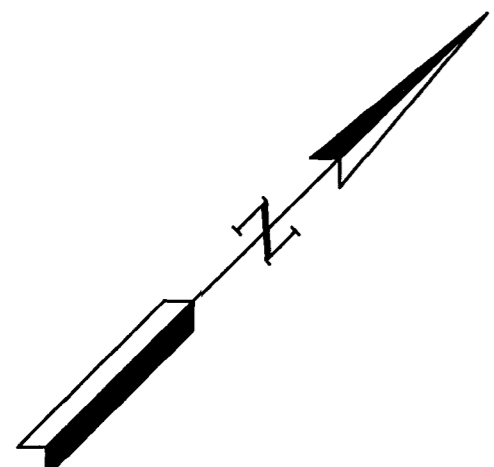
COMMON AREA



DEVELOPMENT AREA ONE, PHASE I

SCALE: 1"=600'

COMMON AREAS TO BE CONVEYED			
SECTION	COMMON AREA	ACRES	REFERENCE
FIELDSTONE PARKWAY	CA-42	1.2602	PLAT BOOK 90, PAGE 9-11
	CA-44	0.6777	"
MILL POND RUN	CA-47	0.0973	PLAT BOOK 90, PAGE 12-15
	CA-48	0.3289	"
	CA-103	0.3549	"
SECTION III-A, SUMMERFIELD	CA-9	0.2434	PLAT BOOK 68, PAGE 57-58
	CA-10	0.1046	"
TOTAL	7 PARCELS	3.0670	



5248 Olde Towne Road, Suite 1
 Williamsburg, Virginia 23188
 (757) 253-0040
 Fax (757) 220-8994

MAP SHOWING COMMON AREAS
 FOR CONVEYANCE TO
 THE ASSOCIATION AT STONEHOUSE, INC.
 (HOMEOWNERS ASSOCIATION)

STONEHOUSE

STONEHOUSE DISTRICT JAMES CITY COUNTY VIRGINIA



No.	DATE	REVISION / COMMENT / NOTE	BY

City of Williamsburg & County of James City
 Circuit Court: This PLAT was recorded on
30 June 2003
 at 4:00 AM/PM, PB 90 PG 71
 DOCUMENT # 030019330
 BETSY B. WOOLRIDGE, CLERK
Betsy B. Woolridge Clerk

Designed AES	Drawn AWT
Scale 1' = 600'	Date 6/30/03
Project No. 9028-17	
Drawing No. 1 OF 1	