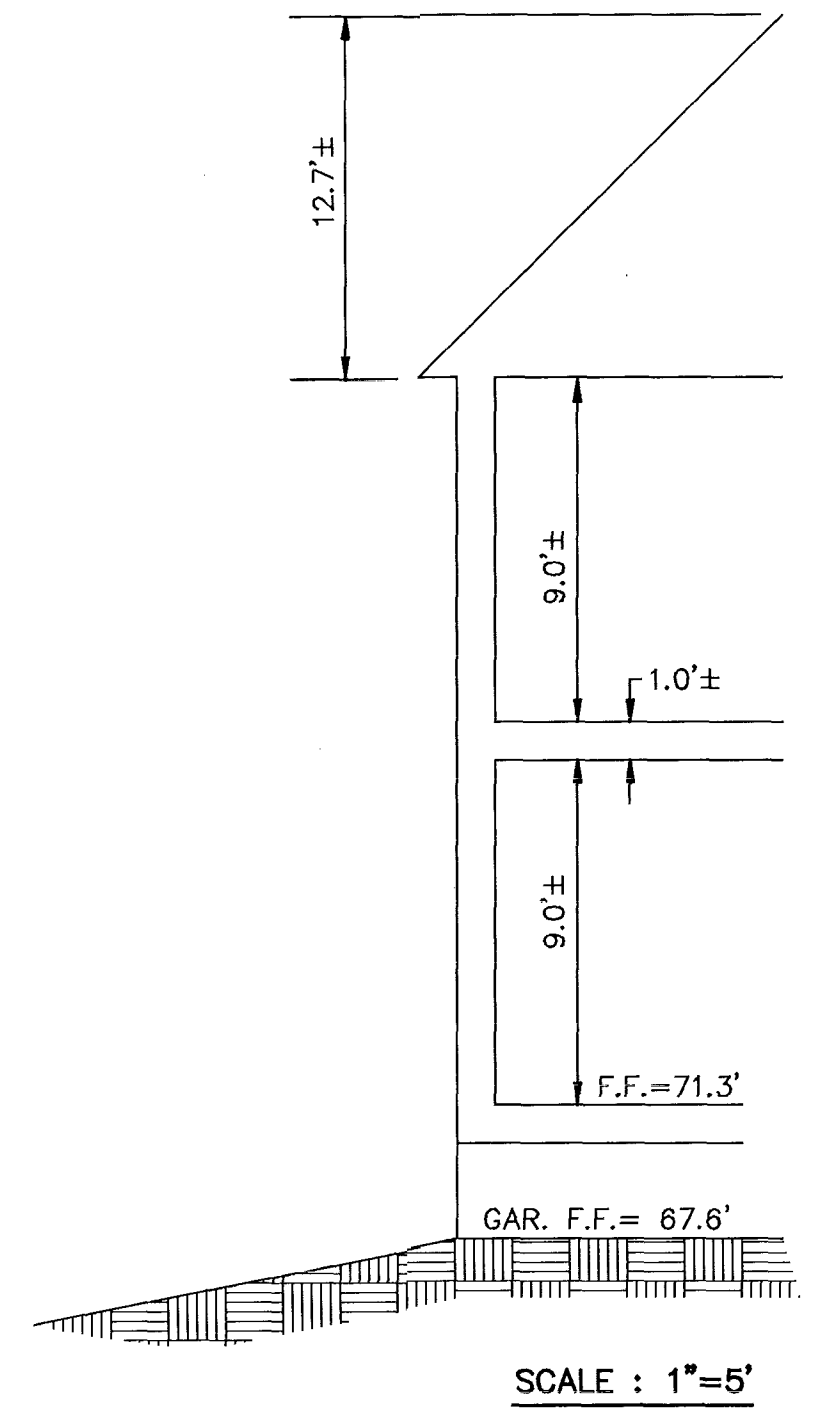
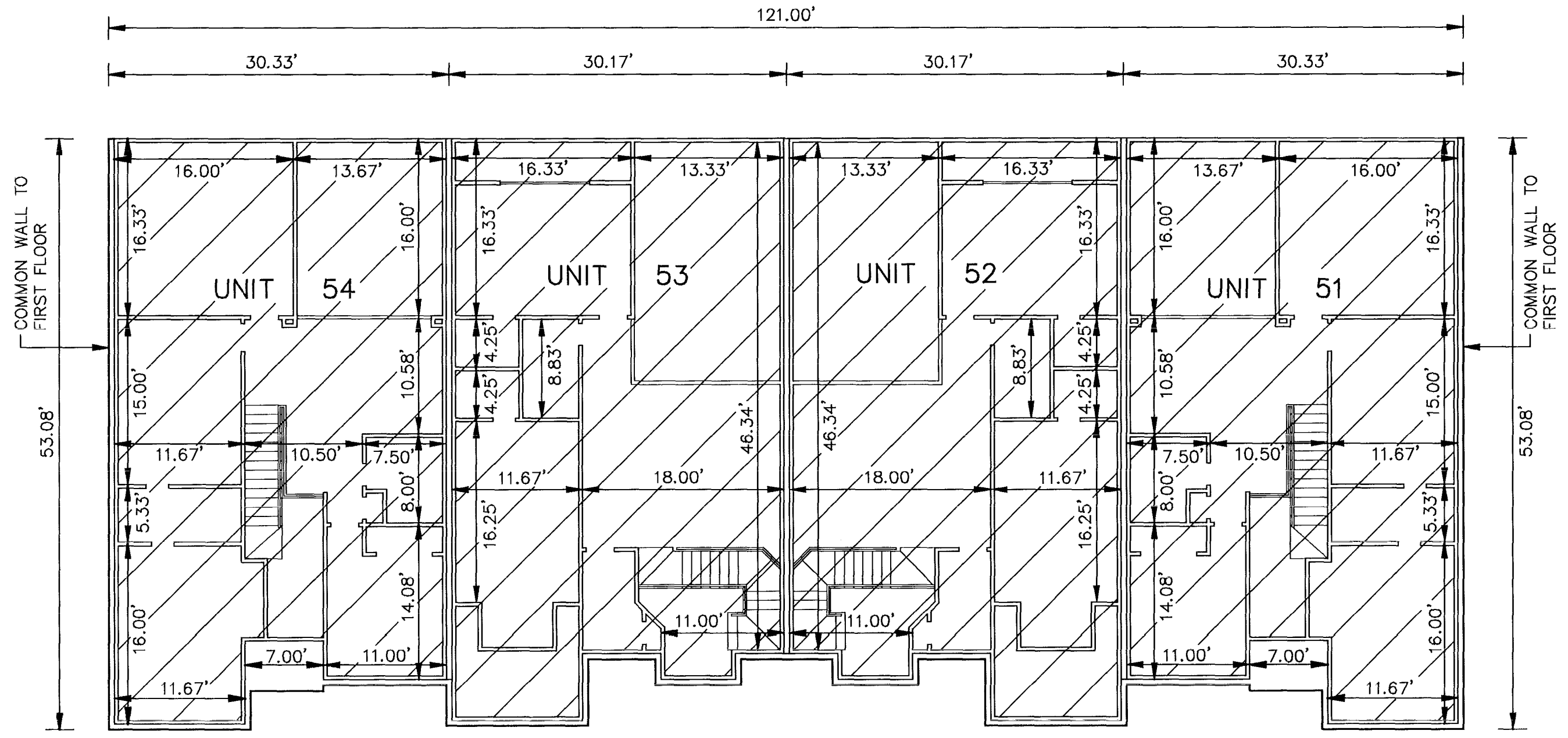


EXHIBIT B-17  
 SUPPLEMENTAL CONDOMINIUM PLAN  
 OF  
 WYNDHAM PLANTATION  
 CONDOMINIUM  
 WILLIAMSBURG, VIRGINIA  
 SCALE: 1"=10' JUNE 11, 2003  
 JOHN E. SIRINE AND ASSOCIATES, LTD.  
 SURVEYORS • ENGINEERS • PLANNERS  
 VIRGINIA BEACH, VIRGINIA  
 (757) 486-4910

- NOTES:
- BUILDING DIMENSIONS SHOWN HEREON ARE INTERIOR DIMENSIONS. THESE DIMENSIONS ARE IN FEET AND WERE TAKEN FROM PLANS SUPPLIED ENTITLED "WYNDHAM PLANTATION AT WILLIAMSBURG, FLOOR PLANS" BY PROGRESSIVE DESIGNS DATED 11/19/98.
  - INTERIOR UNIT CONFIGURATIONS AND PARTITIONS AS DEPICTED HEREON ARE FOR THE PURPOSE OF ILLUSTRATION ONLY AND MAY NOT REPRESENT THE INTERIOR OF A UNIT AS ACTUALLY CONSTRUCTED.

SECOND FLOOR - BUILDING 3

SCALE: 1"=10'



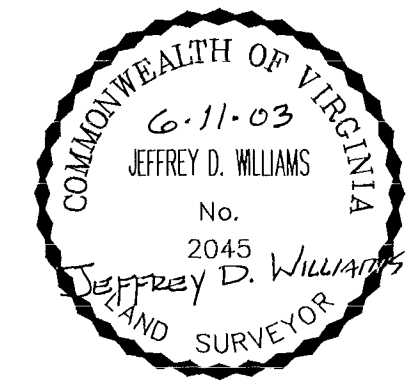
SCALE: 1"=5'

UNIT AREA

PHASE	UNIT No.	UNIT ADDRESS	UNIT AREA
19	51	124 ZELKOVA ROAD	1,853 S.F.
19	52	128 ZELKOVA ROAD	1,957 S.F.
19	53	132 ZELKOVA ROAD	1,957 S.F.
19	54	136 ZELKOVA ROAD	1,853 S.F.

THE UNDERSIGNED CERTIFIES THAT THESE PLANS ARE ACCURATE AND COMPLY WITH THE PROVISIONS OF CODE OF VIRGINIA, SECTION 55-79.58.B AND THAT ALL UNITS OR PORTIONS THEREOF DEPICTED HEREON AND ALL COMMON ELEMENTS HAVE BEEN SUBSTANTIALLY COMPLETED.

SIGNED: JEFFREY D. WILLIAMS  
 JEFFREY D. WILLIAMS, L.S.



City of Williamsburg & County of James City  
 Circuit Court: This PLAT was recorded on 19 June 2003  
 at 2:43 AM/PM, PB 90 PG66-69  
 DOCUMENT # 031276  
 BETSY B. WOOLRIDGE, CLERK  
Betsy B. Woolridge Clerk

