

EXHIBIT B-17
SUPPLEMENTAL CONDOMINIUM PLAN
OF
WYNDHAM PLANTATION
CONDOMINIUM

FIRST FLOOR - BUILDING 3

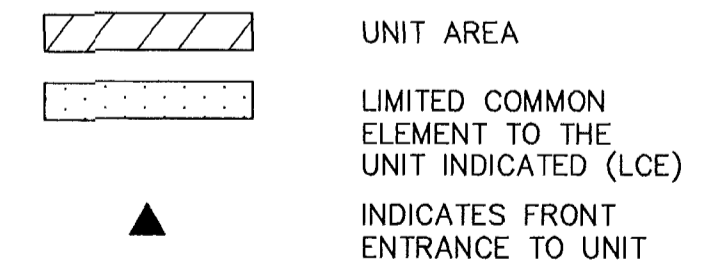
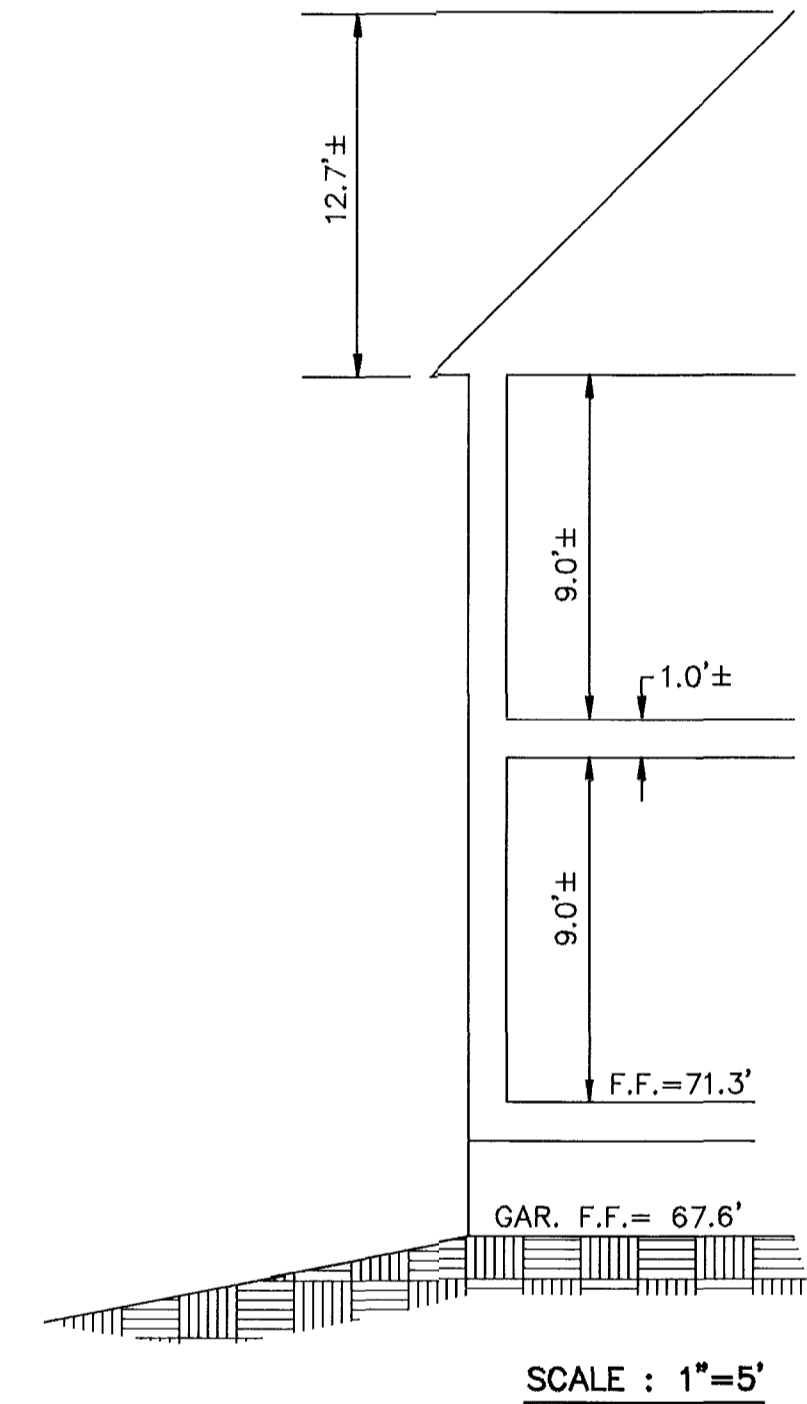
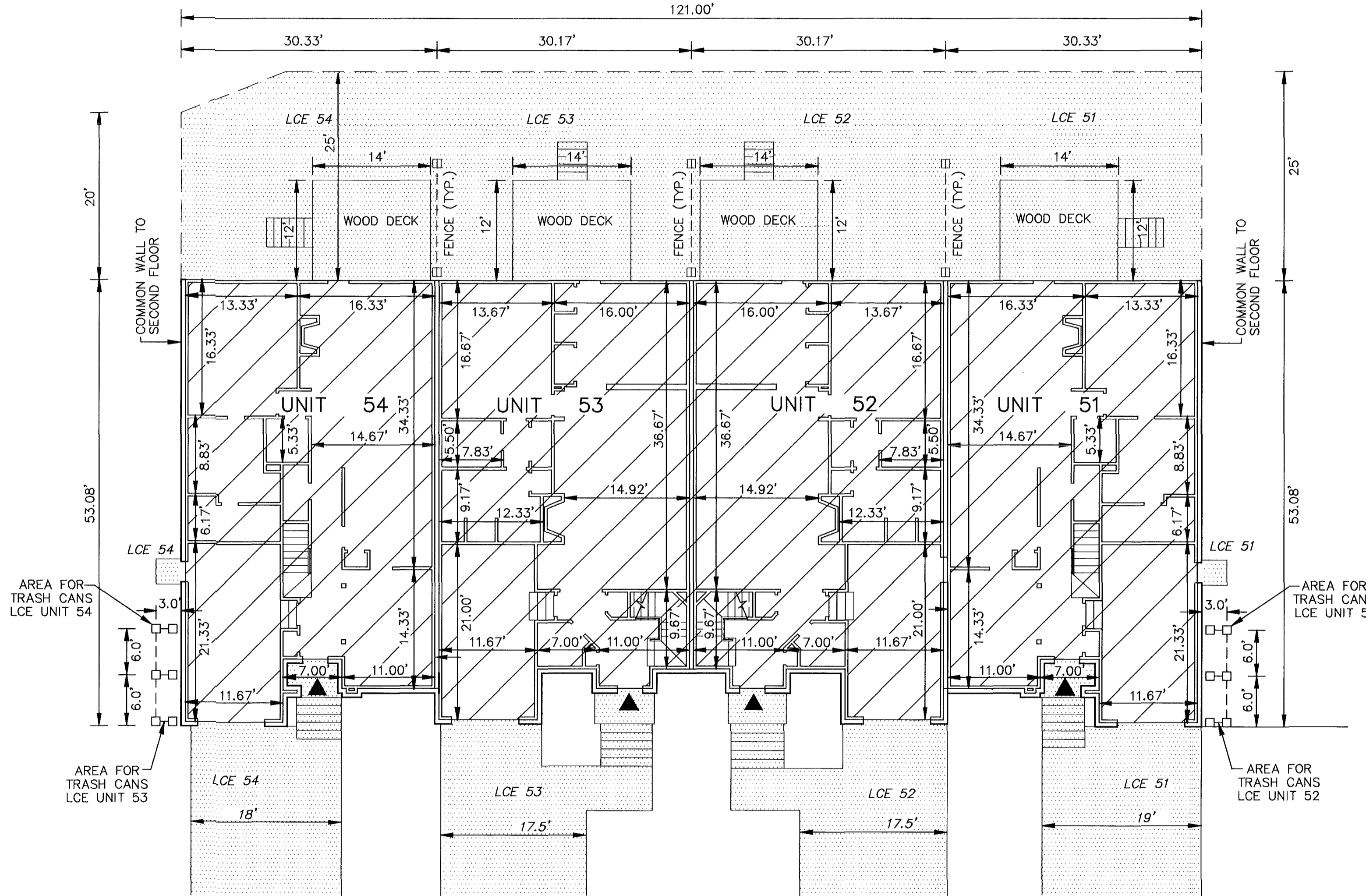
WILLIAMSBURG, VIRGINIA
SCALE: 1"=10' JUNE 11, 2003

SCALE: 1"=10'

JOHN E. SIRINE AND ASSOCIATES, LTD.
SURVEYORS • ENGINEERS • PLANNERS
VIRGINIA BEACH, VIRGINIA
(757) 486-4910

NOTES:

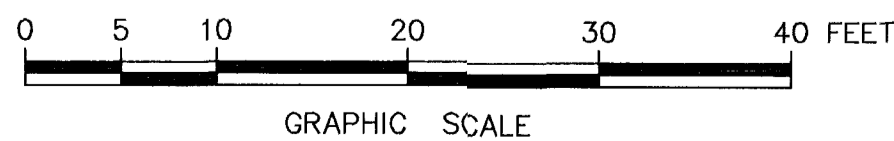
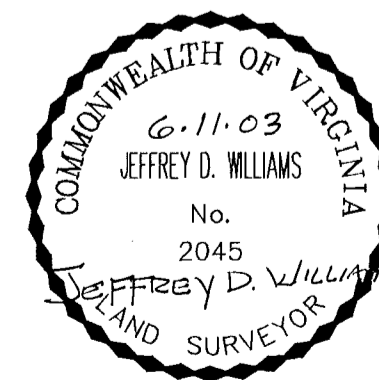
1. BUILDING DIMENSIONS SHOWN HEREON ARE INTERIOR DIMENSIONS. THESE DIMENSIONS ARE IN FEET AND WERE TAKEN FROM PLANS SUPPLIED ENTITLED "WYNDHAM PLANTATION AT WILLIAMSBURG, FLOOR PLANS" BY PROGRESSIVE DESIGNS DATED 11/19/98.
2. INTERIOR UNIT CONFIGURATIONS AND PARTITIONS AS DEPICTED HEREON ARE FOR THE PURPOSE OF ILLUSTRATION ONLY AND MAY NOT REPRESENT THE INTERIOR OF A UNIT AS ACTUALLY CONSTRUCTED.



PHASE	UNIT No.	UNIT ADDRESS	UNIT AREA
19	51	124 ZELKOVA ROAD	1,853 S.F.
19	52	128 ZELKOVA ROAD	1,957 S.F.
19	53	132 ZELKOVA ROAD	1,957 S.F.
19	54	136 ZELKOVA ROAD	1,853 S.F.

THE UNDERSIGNED CERTIFIES THAT THESE PLANS ARE ACCURATE AND COMPLY WITH THE PROVISIONS OF CODE OF VIRGINIA, SECTION 55-79.58.B AND THAT ALL UNITS OR PORTIONS THEREOF DEPICTED HEREON AND ALL COMMON ELEMENTS HAVE BEEN SUBSTANTIALLY COMPLETED, UNLESS OTHERWISE NOTED.

SIGNED: Jeffrey D. Williams
JEFFREY D. WILLIAMS, L.S.



City of Williamsburg & County of James City
Circuit Court: This PLAT was recorded on
19 Jan 2003
at 3:43 AM/PM, PB 90, PG 66-69
DOCUMENT # 031276
BETSY B. WOOLRIDGE, CLERK
Betsy B. Woolridge Clerk