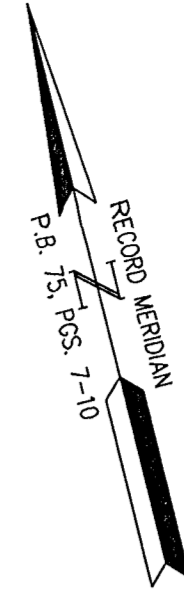
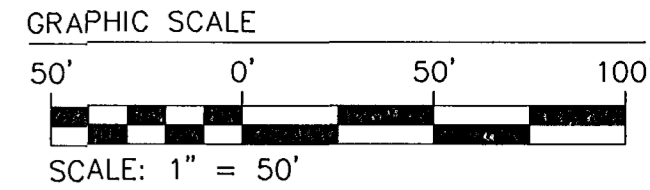


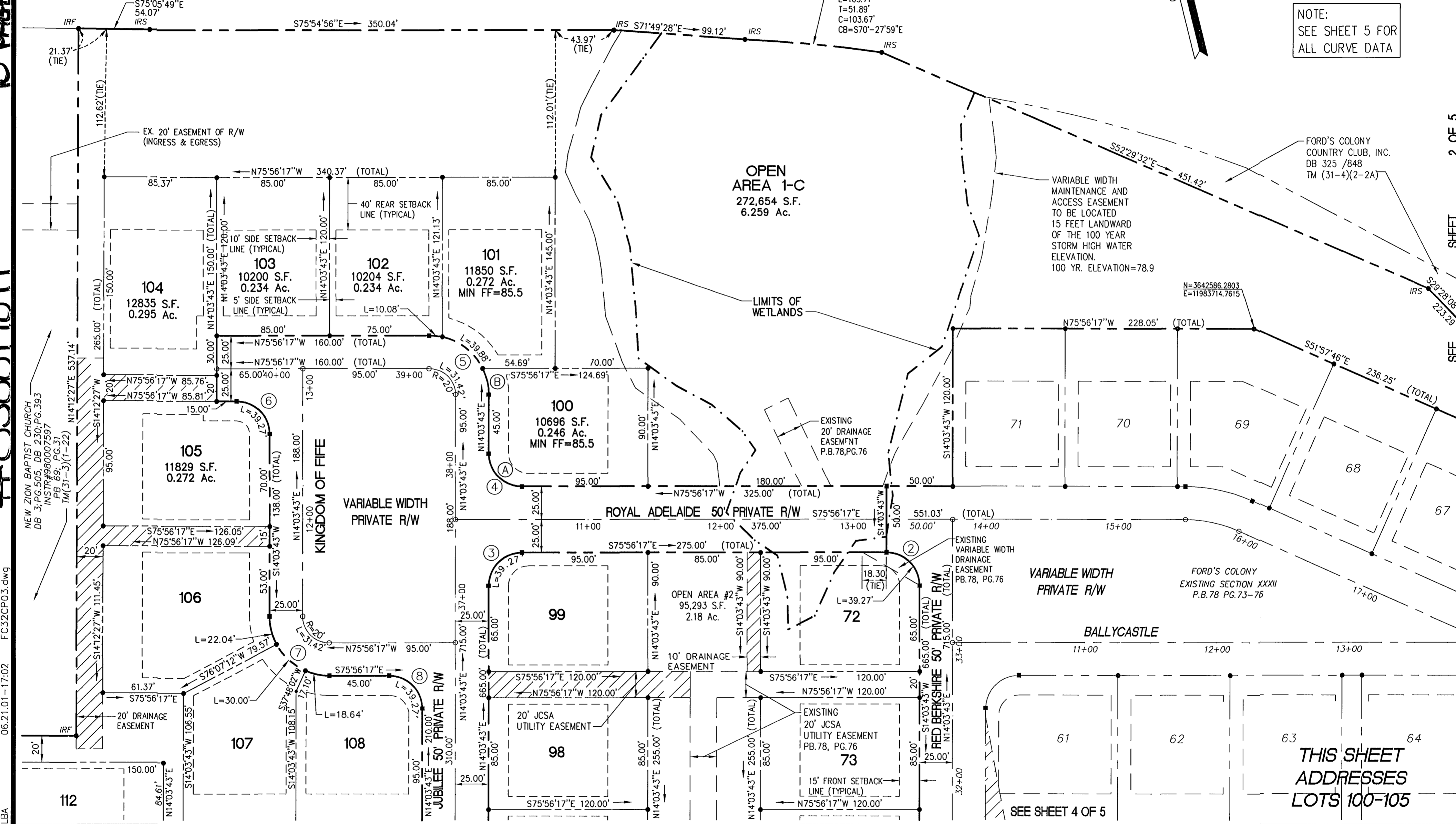
90 PAGE 50

#036017011



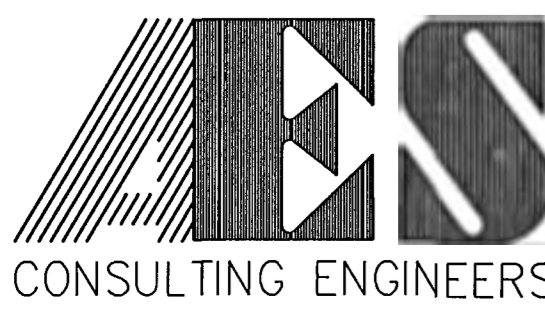
NOTE: SEE SHEET 5 FOR ALL CURVE DATA

LONGHILL ROAD S. R. 612 VARIABLE WIDTH (MIN. 50')



2 OF 5 SHEET SEE

FC32CP03.dwg 06.21.01-17:02 LBA



5248 Olde Towne Road, Suite 1
Williamsburg, Virginia 23188
(757) 253-0040
Fax (757) 220-8994

PLAT OF SUBDIVISION
SECTION XXII
LOTS 72 - 78, 93 - 129
**FORD'S COLONY
AT WILLIAMSBURG**
POWHATAN DISTRICT JAMES CITY COUNTY VIRGINIA



No.	DATE	REVISION / COMMENT / NOTE	BY

City of Williamsburg & County of James City
Circuit Court: This PLAT was recorded on
9 June 2003
at 1:08 PM/PM, PB 90 PG 48-52
DOCUMENT # 030017011
BETSY B. WOOLRIDGE, CLERK
Betsy B. Woolridge Clerk

Designed CBR	Drawn AES
Scale 1"=50'	Date 6/22/01
Project No. 5652-32C	Drawing No. 3 OF 5

**THIS SHEET
ADDRESSES
LOTS 100-105**

SEE SHEET 4 OF 5