

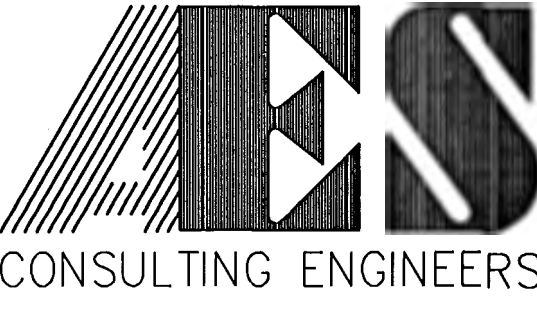
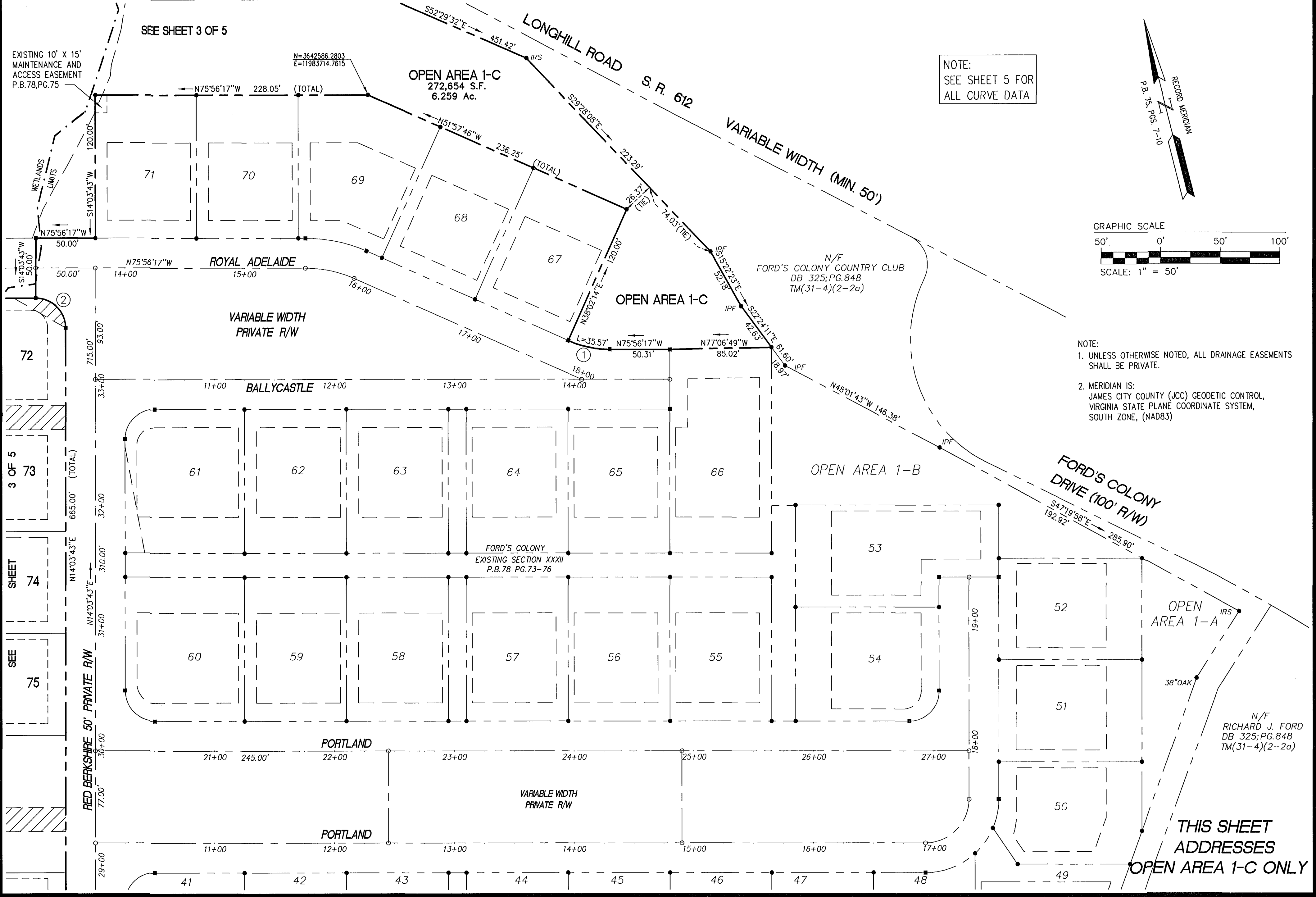
90 PAGE 49

#030017011

FC32CP02.DWG

06.21.01-17:03

LBA



5248 Olde Towne Road, Suite 1
Williamsburg, Virginia 23188
(757) 253-0040
Fax (757) 220-8994

PLAT OF SUBDIVISION
SECTION XXXII
LOTS 72-78, 93-129
FORD'S COLONY
AT WILLIAMSBURG

POWhatan DISTRICT JAMES CITY COUNTY VIRGINIA



No.	DATE	REVISION / COMMENT / NOTE	BY

City of Williamsburg & County of James City
Circuit Court: This PLAT was recorded on
9 June 2003
at 1:08 AM/PM, PB 90 PG 48-52
DOCUMENT # 030017011
BETSY B. WOOLRIDGE, CLERK
Betsy B. Woolridge Clerk

Designed CBR	Drawn AES
Scale 1"=50'	Date 6/22/01
Project No. 5652-32C	
Drawing No. 2 OF 5	