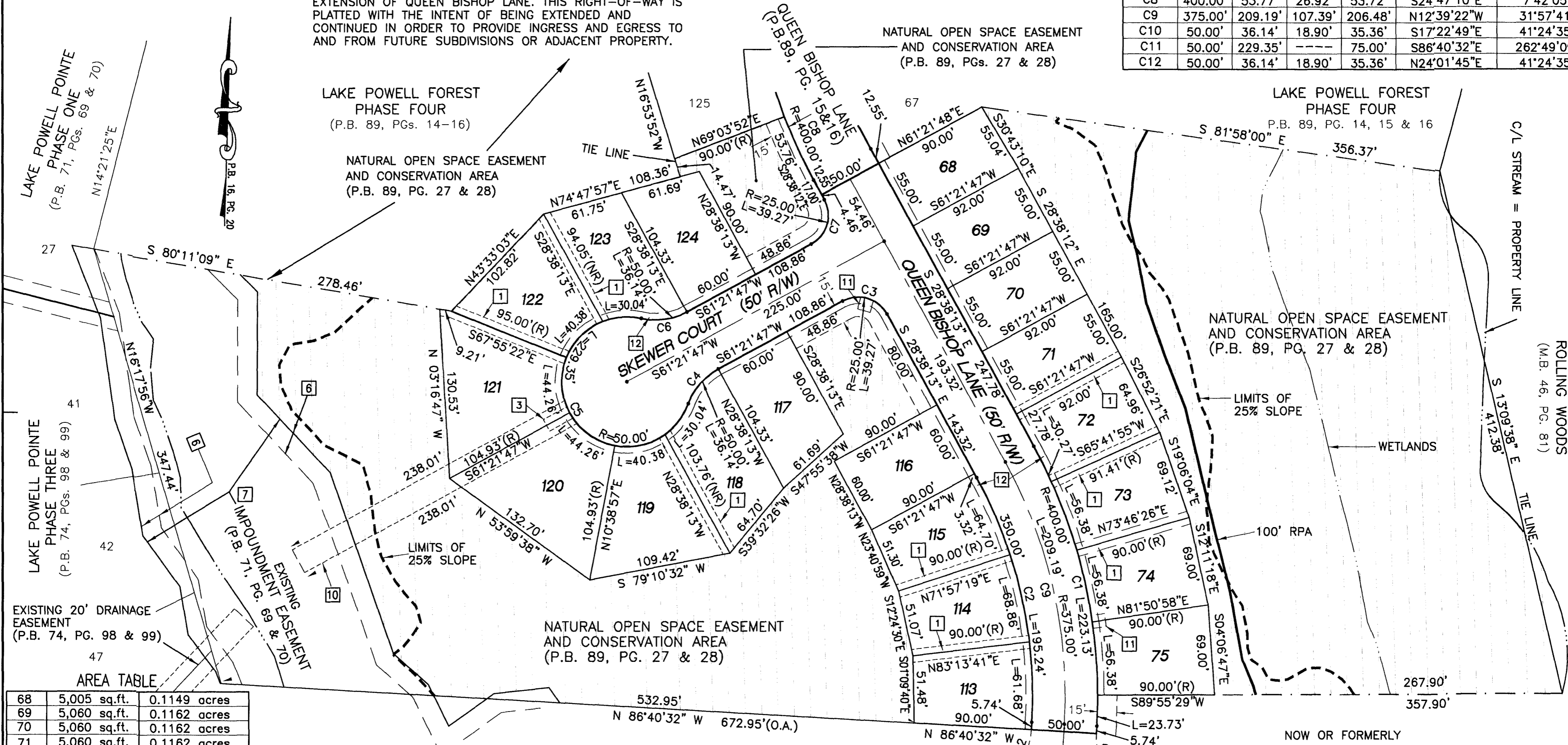


EASEMENT NOTATIONS

- 1 10' PRIVATE DRAINAGE EASEMENT
- 3 10' X 20' VIRGINIA POWER EASEMENT
- 6 EXISTING 15' MAINTENANCE EASEMENT (P.B. 71, PG. 69 & 70)
- 7 EXISTING IMPOUNDMENT EASEMENT (P.B. 71, PG. 69 & 70)
- 10 20' DRAINAGE EASEMENT HEREBY DEDICATED TO HOMEOWNERS ASSOCIATION
- 11 10' X 10' VIRGINIA POWER EASEMENT
- 12 5' UTILITY EASEMENT HEREBY DEDICATED EXCLUSIVELY TO JAMES CITY COUNTY SERVICE AUTHORITY
- 15 TEMPORARY CUL-DE-SAC IS TO BE VACATED UPON THE EXTENSION OF QUEEN BISHOP LANE. THIS RIGHT-OF-WAY IS PLATTED WITH THE INTENT OF BEING EXTENDED AND CONTINUED IN ORDER TO PROVIDE INGRESS AND EGRESS TO AND FROM FUTURE SUBDIVISIONS OR ADJACENT PROPERTY.

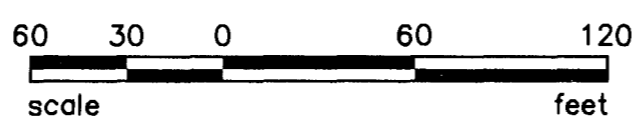
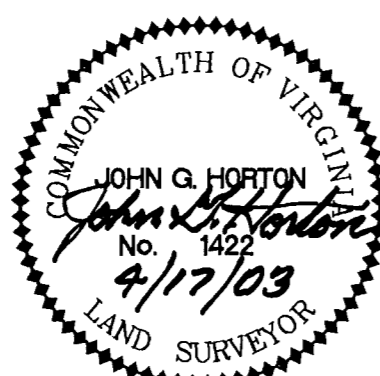
City of Williamsburg & County of James City
 Circuit Court: This PLAT was recorded on
 29 May 2003
 at 11:35 AM/PM, PB 90 PG 39140
 DOCUMENT # 030015898
 BETSY B. WOOLRIDGE, CLERK
Betsy B. Woolridge Clerk

CURVE TABLE						
CURVE	RADIUS	LENGTH	TANGENT	CHORD	BEARING	DELTA
C1	400.00'	223.13'	114.55'	220.25'	N12°39'22"W	31°57'41"
C2	350.00'	195.24'	100.23'	192.72'	N12°39'22"W	31°57'41"
C3	25.00'	39.27'	25.00'	35.36'	N73°38'13"W	90°00'00"
C4	50.00'	36.14'	18.90'	35.36'	S40°39'30"W	41°24'35"
C5	50.00'	229.35'	---	75.00'	S28°38'13"E	262°49'09"
C6	50.00'	36.14'	18.90'	35.36'	N82°04'05"E	41°24'35"
C7	25.00'	39.27'	25.00'	35.36'	N16°21'47"E	90°00'00"
C8	400.00'	53.77'	26.92'	53.72'	S24°47'10"E	7°42'05"
C9	375.00'	209.19'	107.39'	206.48'	N12°39'22"W	31°57'41"
C10	50.00'	36.14'	18.90'	35.36'	S17°22'49"E	41°24'35"
C11	50.00'	229.35'	---	75.00'	S86°40'32"E	262°49'09"
C12	50.00'	36.14'	18.90'	35.36'	N24°01'45"E	41°24'35"



AREA TABLE

68	5,005 sq.ft.	0.1149 acres
69	5,060 sq.ft.	0.1162 acres
70	5,060 sq.ft.	0.1162 acres
71	5,060 sq.ft.	0.1162 acres
72	5,613 sq.ft.	0.1289 acres
73	5,637 sq.ft.	0.1294 acres
74	5,589 sq.ft.	0.1283 acres
75	5,589 sq.ft.	0.1283 acres
113	5,396 sq.ft.	0.1239 acres
114	5,443 sq.ft.	0.1250 acres
115	5,417 sq.ft.	0.1244 acres
116	5,400 sq.ft.	0.1240 acres
117	5,830 sq.ft.	0.1338 acres
118	6,313 sq.ft.	0.1449 acres
119	7,194 sq.ft.	0.1651 acres
120	8,182 sq.ft.	0.1878 acres
121	8,174 sq.ft.	0.1876 acres
122	6,213 sq.ft.	0.1426 acres
123	6,022 sq.ft.	0.1382 acres
124	5,830 sq.ft.	0.1338 acres



W.O. ACAD\DWG\13361\SURVEY\PHASE5.DWG

"FUTURE PUBLIC STREET EXTENSION"

NOW OR FORMERLY
 BOYD CORPORATION
 (D.B. 777, PG. 825)

SUBDIVISION
 OF
LAKE POWELL FOREST
 PHASE FIVE
 JAMESTOWN MAGISTERIAL DISTRICT
 JAMES CITY COUNTY, VIRGINIA
 SCALE : 1" = 60' FEB. 25, 2003

HORTON & DODD, P.C.
 SURVEYORS, ENGINEERS & PLANNERS
 300 GEORGE WASHINGTON HIGHWAY N.
 CHESAPEAKE VIRGINIA 23323
 (757) 487-4535

APRIL 17, 2003

SHEET 2 OF 2