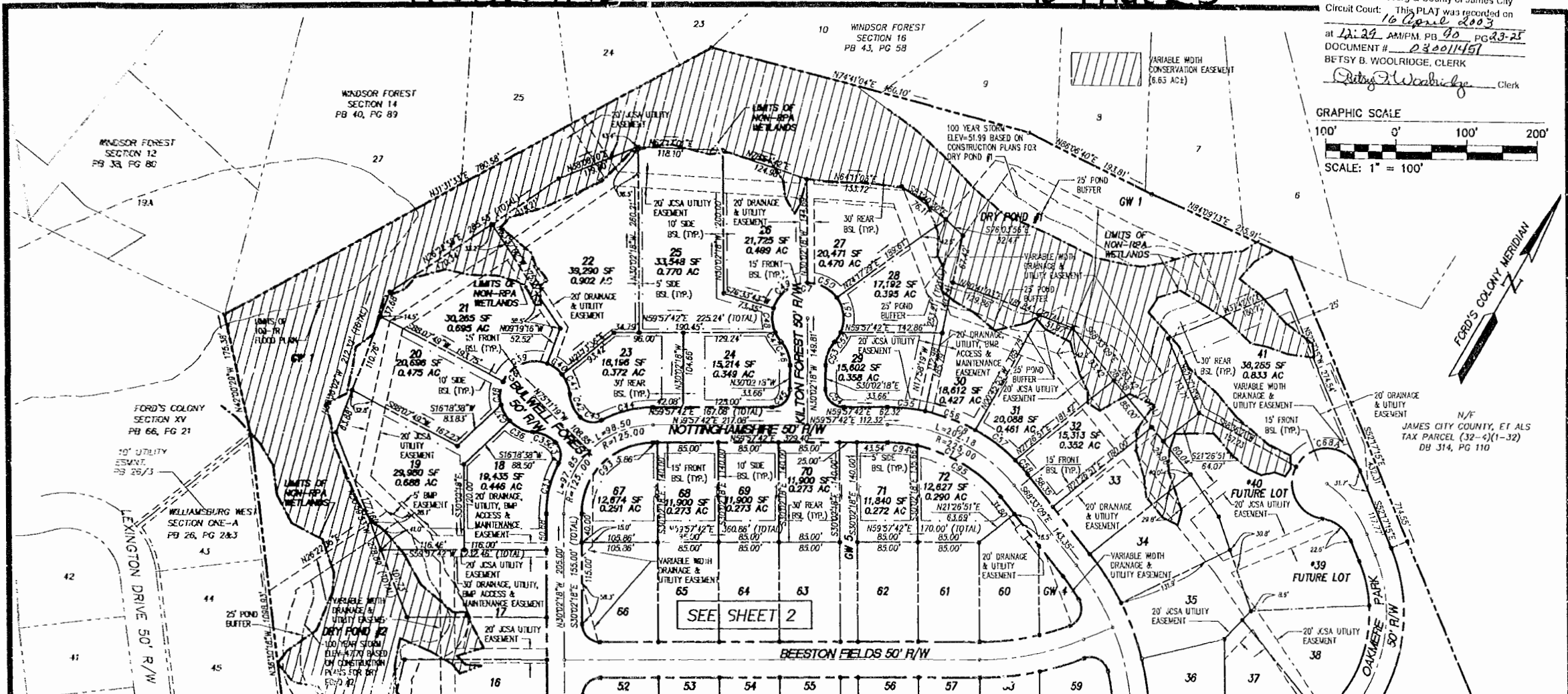
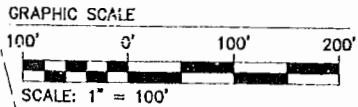


#030011451

90 PAGE 25

City of Williamsburg & County of James City  
 Circuit Court: This PLAT was recorded on  
 16 April 2003  
 at 12:22 AM PM, PB 90, PG 23-25  
 DOCUMENT # 030011451  
 BETSY B. WOOLRIDGE, CLERK  
 Betsy B. Woolridge, Clerk



**LOT CURVE TABLE**

LOT	NO.	DELTA	RADIUS	LENGTH	TANGENT	CHORD	CHL BEARING
2	C01	175.00	170.65	57.41	108.10	58.24	S82°18'20"W
3	C02	175.00	34.40	17.30	34.43	58.24	S82°18'20"W
4	C03	175.00	81.80	46.57	90.55	N74°57'22"E	
5	C04	25.00	32.85	16.36	30.62	S82°18'20"W	
6	C05	50.00	20.12	10.20	19.88	N25°27'28"E	
7	C06	50.00	40.24	20.40	39.76	N82°18'20"E	
8	C07	50.00	52.36	26.88	50.02	S82°18'20"E	
9	C08	50.00	50.34	27.54	48.24	S12°24'11"E	
10	C09	50.00	38.78	19.27	35.97	S82°18'20"W	
11	C10	50.00	52.36	26.87	50.00	N47°25'41"E	
12	C11	25.00	32.85	16.36	30.62	N82°18'20"E	
13	C12	175.00	84.86	43.62	83.70	S82°18'20"E	
14	C13	150.00	71.85	37.74	73.21	S15°24'51"E	
15	C14	25.00	32.83	16.36	30.62	N82°18'20"E	
16	C15	50.00	38.74	19.05	36.58	N84°51'22"E	
17	C16	50.00	37.44	18.40	35.89	N84°51'22"E	
18	C17	50.00	75.02	46.80	63.18	S37°14'41"E	
19	C18	50.00	28.88	13.85	28.34	N82°18'20"W	
20	C19	50.00	38.74	19.05	36.58	N84°51'22"E	
21	C20	50.00	38.74	19.05	36.58	N84°51'22"E	
22	C21	50.00	38.74	19.05	36.58	N84°51'22"E	
23	C22	50.00	38.74	19.05	36.58	N84°51'22"E	
24	C23	50.00	38.74	19.05	36.58	N84°51'22"E	
25	C24	50.00	38.74	19.05	36.58	N84°51'22"E	
26	C25	50.00	38.74	19.05	36.58	N84°51'22"E	
27	C26	50.00	38.74	19.05	36.58	N84°51'22"E	
28	C27	50.00	38.74	19.05	36.58	N84°51'22"E	
29	C28	50.00	38.74	19.05	36.58	N84°51'22"E	
30	C29	50.00	38.74	19.05	36.58	N84°51'22"E	
31	C30	50.00	38.74	19.05	36.58	N84°51'22"E	
32	C31	50.00	38.74	19.05	36.58	N84°51'22"E	
33	C32	50.00	38.74	19.05	36.58	N84°51'22"E	
34	C33	50.00	38.74	19.05	36.58	N84°51'22"E	
35	C34	50.00	38.74	19.05	36.58	N84°51'22"E	
36	C35	50.00	38.74	19.05	36.58	N84°51'22"E	
37	C36	50.00	38.74	19.05	36.58	N84°51'22"E	
38	C37	50.00	38.74	19.05	36.58	N84°51'22"E	
39	C38	50.00	38.74	19.05	36.58	N84°51'22"E	
40	C39	50.00	38.74	19.05	36.58	N84°51'22"E	
41	C40	50.00	38.74	19.05	36.58	N84°51'22"E	
42	C41	50.00	38.74	19.05	36.58	N84°51'22"E	
43	C42	50.00	38.74	19.05	36.58	N84°51'22"E	
44	C43	50.00	38.74	19.05	36.58	N84°51'22"E	
45	C44	50.00	38.74	19.05	36.58	N84°51'22"E	
46	C45	50.00	38.74	19.05	36.58	N84°51'22"E	
47	C46	50.00	38.74	19.05	36.58	N84°51'22"E	
48	C47	50.00	38.74	19.05	36.58	N84°51'22"E	
49	C48	50.00	38.74	19.05	36.58	N84°51'22"E	
50	C49	50.00	38.74	19.05	36.58	N84°51'22"E	
51	C50	50.00	38.74	19.05	36.58	N84°51'22"E	
52	C51	50.00	38.74	19.05	36.58	N84°51'22"E	
53	C52	50.00	38.74	19.05	36.58	N84°51'22"E	
54	C53	50.00	38.74	19.05	36.58	N84°51'22"E	
55	C54	50.00	38.74	19.05	36.58	N84°51'22"E	
56	C55	50.00	38.74	19.05	36.58	N84°51'22"E	
57	C56	50.00	38.74	19.05	36.58	N84°51'22"E	
58	C57	50.00	38.74	19.05	36.58	N84°51'22"E	
59	C58	50.00	38.74	19.05	36.58	N84°51'22"E	
60	C59	50.00	38.74	19.05	36.58	N84°51'22"E	
61	C60	50.00	38.74	19.05	36.58	N84°51'22"E	
62	C61	50.00	38.74	19.05	36.58	N84°51'22"E	
63	C62	50.00	38.74	19.05	36.58	N84°51'22"E	
64	C63	50.00	38.74	19.05	36.58	N84°51'22"E	
65	C64	50.00	38.74	19.05	36.58	N84°51'22"E	
66	C65	50.00	38.74	19.05	36.58	N84°51'22"E	
67	C66	50.00	38.74	19.05	36.58	N84°51'22"E	
68	C67	50.00	38.74	19.05	36.58	N84°51'22"E	
69	C68	50.00	38.74	19.05	36.58	N84°51'22"E	
70	C69	50.00	38.74	19.05	36.58	N84°51'22"E	
71	C70	50.00	38.74	19.05	36.58	N84°51'22"E	
72	C71	50.00	38.74	19.05	36.58	N84°51'22"E	

**LOT CURVE TABLE**

LOT	NO.	DELTA	RADIUS	LENGTH	TANGENT	CHORD	CHL BEARING
27	C50	5418'47"	50.00	47.41	25.85	45.68	S87°07'36"W
28	C51	5917'57"	50.00	51.86	28.40	48.30	N82°06'32"E
29	C52	1732'31"	50.00	15.80	7.87	15.54	N82°06'32"E
30	C53	1732'31"	50.00	38.14	18.90	35.36	S82°06'32"E
31	C54	907'00"	25.00	38.27	25.00	35.36	S75°02'18"E
32	C55	1771'11"	250.00	53.17	26.89	53.07	S82°06'32"E
33	C56	1775'14"	250.00	74.58	37.58	74.28	S80°43'30"E
34	C57	1815'13"	250.00	70.21	35.34	69.88	N82°06'32"E
35	C58	6127'13"	250.00	28.70	13.36	28.69	N71°25'45"W
36	C59	1728'44"	375.00	61.48	40.88	61.30	N82°06'32"E
37	C60	1728'44"	375.00	83.53	41.85	83.37	N82°06'32"E
38	C61	1718'13"	375.00	67.07	43.73	68.28	N82°06'32"E
39	C62	907'00"	25.00	38.27	25.00	35.36	S75°02'18"E
40	C63	3815'31"	190.00	128.93	67.82	127.41	N40°22'17"E
41	C64	5120'27"	190.00	177.89	98.13	177.55	N36°03'23"E
42	C65	1925'38"	190.00	94.31	32.47	64.01	N42°35'26"E
43	C66	3815'31"	50.00	34.70	18.08	34.01	N72°10'05"W
44	C67	2071'41"	50.00	17.88	3.82	17.57	S77°19'32"E
45	C68	1105'33"	50.00	66.77	72.61	82.38	N82°06'32"E
46	C69	1297'24"	50.00	112.67	105.06	90.30	N82°06'32"E
47	C70	3815'31"	75.00	51.17	26.63	50.18	N48°30'25"W
48	C71	7707'27"	25.00	34.52	20.25	31.85	S71°13'07"E
49	C72	2825'24"	240.00	108.50	54.14	105.63	N44°22'11"E
50	C73	232'44"	240.00	12.08	6.03	12.68	N82°06'32"E
51	C74	807'00"	25.00	38.27	25.00	35.36	S15°57'42"E
52	C75	1128'05"	200.00	38.91	20.02	38.85	N82°06'32"E
53	C76	1053'21"	200.00	38.02	18.07	37.98	N72°06'32"E
54	C77	733'06"	25.00	31.88	18.50	28.74	S44°13'01"E
55	C78	1119'52"	250.00	48.37	24.76	48.24	N75°03'56"W

**LOT CURVE TABLE**

LOT	NO.	DELTA	RADIUS	LENGTH	TANGENT	CHORD	CHL BEARING
45	C69	678'53"	150.00	18.28	8.15	18.27	N26°32'51"W
46	C70	807'00"	125.00	198.35	125.00	178.78	S75°02'18"E
47	C71	807'00"	25.00	38.27	25.00	35.36	S14°57'42"W
48	C72	1132'13"	425.00	65.58	42.63	65.43	N45°11'38"E
49	C73	807'00"	425.00	67.05	33.60	66.98	N43°54'18"E
50	C74	8818'57"	25.00	42.90	28.82	37.83	S88°33'35"W
51	C75	1215'15"	250.00	68.55	34.91	68.42	N81°04'07"W
52	C76	1318'03"	375.00	85.74	43.08	85.58	N53°24'41"E
53	C77	807'00"	25.00	38.27	25.00	35.36	S75°02'18"E
54	C78	807'00"	100.00	157.68	100.00	141.42	S14°57'42"W
55	C79	1158'17"	200.00	41.78	20.98	41.88	S82°38'38"W
56	C80	3815'31"	200.00	157.68	71.85	158.24	N88°18'50"W

**RIGHT-OF-WAY CURVE TABLE**

NO.	DELTA	RADIUS	LENGTH	TANGENT	CHORD	CHL BEARING
C1	2516'45"	100.00	44.12	22.43	43.76	N47°18'20"E
C2	8207'20"	25.00	40.20	25.94	38.00	N11°22'43"W
C3	6235'55"	175.00	181.20	106.40	181.83	N88°44'20"W
C4	2838'20"	175.00	91.60	48.87	90.55	N74°57'22"E
C5	2400'00"	50.00	208.44	---	86.60	N45°34'18"E
C6	25248'08"	50.00	228.35	---	75.00	S14°48'41"W
C7	26248'08"	50.00	228.35	---	75.00	S89°57'42"W
C8	5128'08"	250.00	224.65	120.55	217.17	S85°42'17"W
C9	3830'31"	375.00	252.07	131.01	247.38	N48°14'51"W
C10	11214'57"	190.00	372.23	283.01	315.50	N03°50'11"E
C11	6000'00"	50.00	52.36	28.87	50.03	N82°17'15"W
C12	2400'00"	50.00	208.44	---	86.60	S07°24'45"W
C13	8211'53"	240.00	263.51	144.78	247.91	N45°48'33"E
C14	2818'18"	240.00	118.64	60.52	117.38	N45°48'33"E
C15	2218'38"	200.00	77.93	38.47	77.44	N18°52'30"W
C16	2318'38"	250.00	101.59	51.51	100.89	N69°04'52"W
C17	3541'15"	188.00	164.64	54.08	162.96	S75°17'01"E
C18	5128'08"	200.00	178.72	93.44	173.73	S85°42'17"W
C19	2072'37"	375.00	132.28	68.83	131.59	N48°51'23"E
C20	2241'49"	150.00	58.42	30.10	58.03	N18°41'24"W

**FUTURE DEVELOPMENT CURVE TABLE**

FD	NO.	DELTA	RADIUS	LENGTH	TANGENT	CHORD	CHL BEARING
1	C89	2927'27"	25.00	34.52	20.65	31.85	S28°38'24"E
2	C90	1158'08"	250.00	52.22	26.21	52.13	N82°32'27"W

**GREENWAY CURVE TABLE**

GW	NO.	DELTA	RADIUS	LENGTH	TANGENT	CHORD	CHL BEARING
1	C90	1458'52"	175.00	45.78	23.01	45.63	N44°55'49"W
2	C91	6738'11"	25.00	28.37	16.84	27.71	N28°18'38"E
3	C92	1542'56"	150.00	41.14	20.70	41.01	N15°11'37"W
4	C93	726'54"	375.00	48.53	23.30	48.50	N43°18'22"E
5	C94	726'54"	375.00	48.53	23.30	48.50	N43°18'22"E
6	C95	726'54"	375.00	48.53	23.30	48.50	N43°18'22"E
7	C96	726'54"	375.00	48.53	23.30	48.50	N43°18'22"E
8	C97	10174'42"	25.00	44.18	30.48	38.65	N105°24'18"W