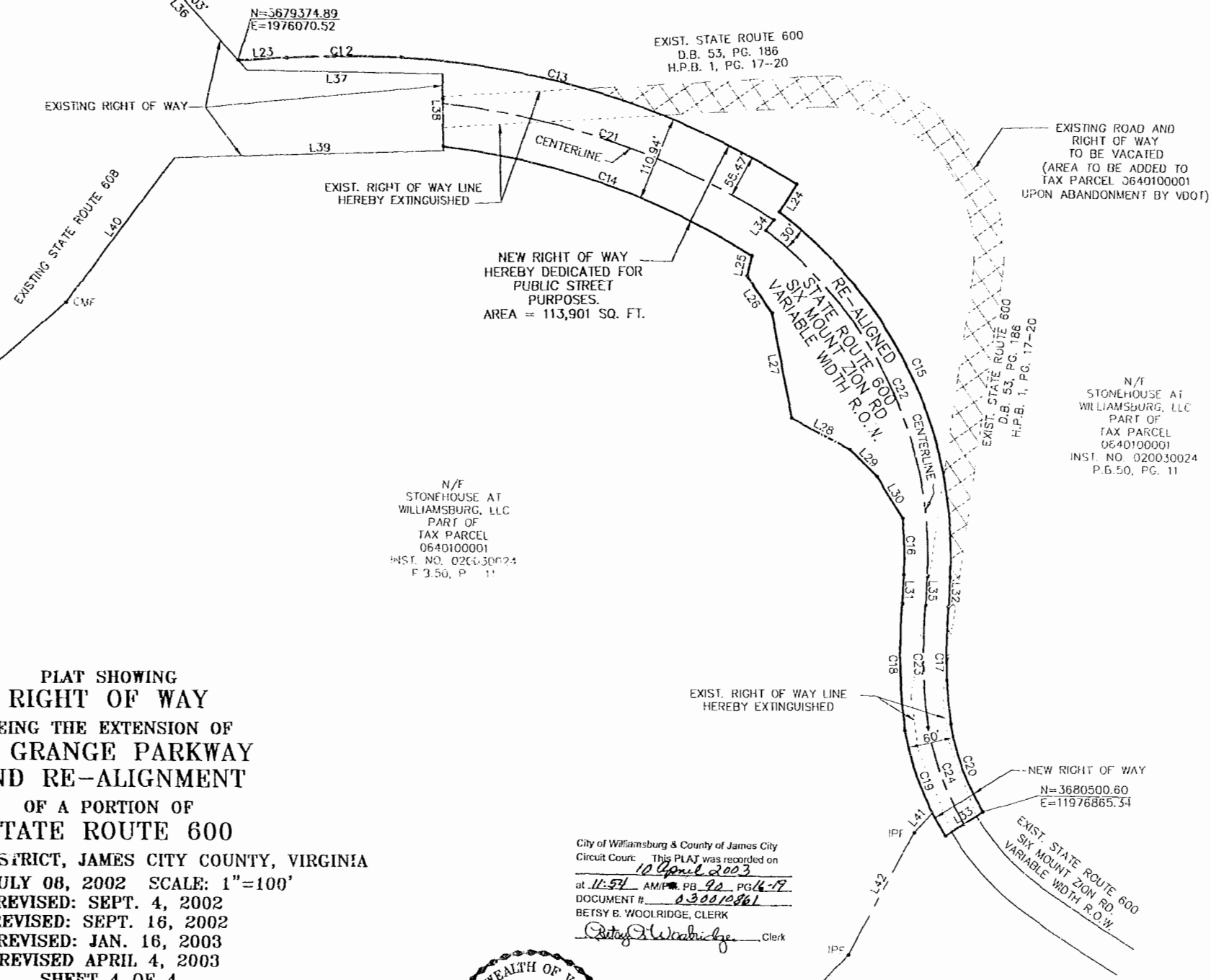
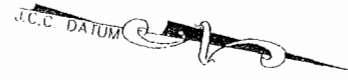


INTERSTATE 64
CENTERLINE OF EAST
BOUND LANES

N/F
STONEHOUSE AT
WILLIAMSBURG, LLC
PART OF
TAX PARCEL
0640100001
INST. NO. 020030024
P.B.50, PG. 11



**PLAT SHOWING
RIGHT OF WAY
BEING THE EXTENSION OF
LA GRANGE PARKWAY
AND RE-ALIGNMENT
OF A PORTION OF
STATE ROUTE 600**

STONEHOUSE DISTRICT, JAMES CITY COUNTY, VIRGINIA
 DATE: JULY 08, 2002 SCALE: 1"=100'
 REVISED: SEPT. 4, 2002
 REVISED: SEPT. 16, 2002
 REVISED: JAN. 16, 2003
 REVISED APRIL 4, 2003
 SHEET 4 OF 4

N/F
STONEHOUSE AT
WILLIAMSBURG, LLC
PART OF
TAX PARCEL
0640100001
INST. NO. 020030024
P.B.50, PG. 11

City of Williamsburg & County of James City
 Circuit Court: This PLAT was recorded on
10 April 2003
 at 11:54 AM P.B. 90 PG. 19
 DOCUMENT # 030010861
 BETSY B. WOOLRIDGE, CLERK
Betsy B. Woolridge Clerk



4029 Ironbound Road
 Suite 100
 Williamsburg, VA 23188
 Tel. (757) 253-2975
 Fax (757) 229-0049
 Email: lmdg@landmarkdgvb.com

5544 Greenaich Road
 Suite 200
 Virginia Beach, VA 23462
 Tel. (757) 473-2000
 Fax (757) 492-7933
 Email: lmdg@landmarkdgv.com

**LANDMARK
DESIGN GROUP**
 Engineers • Planners • Surveyors
 Landscape Architects • Environmental Consultants

N/F
STONEHOUSE AT
WILLIAMSBURG, LLC
PART OF
TAX PARCEL
0640100001
INST. NO. 020030024
P.B.50, PG. 11

