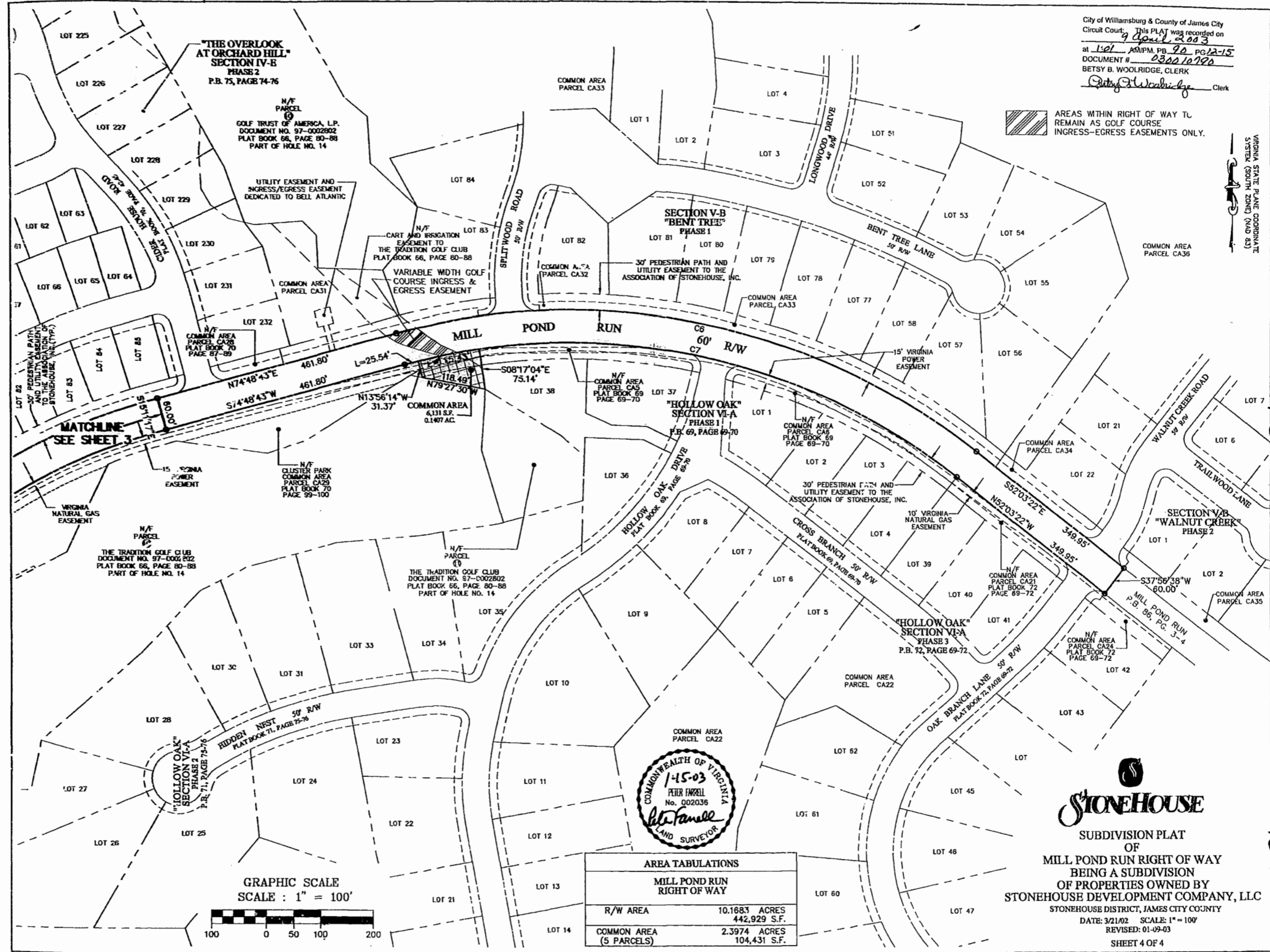


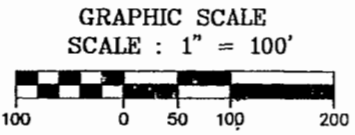
City of Williamsburg & County of James City
 Circuit Court: This PLAT was recorded on
9 April 2003
 at 1:01 PM, P.B. 90, PG. 12-15
 DOCUMENT # 030010190
 BETSY B. WOOLRIDGE, CLERK
Betsy B. Woolridge Clerk

AREAS WITHIN RIGHT OF WAY TL
 REMAIN AS GOLF COURSE
 INGRESS-EGRESS EASEMENTS ONLY.

VIRGINIA STATE PLANE COORDINATE
 SYSTEM (SOUTH ZONE) (NAD 83)



MATCHLINE
 SEE SHEET 3



AREA TABULATIONS	
MILL POND RUN RIGHT OF WAY	
R/W AREA	10.1683 ACRES 442,929 S.F.
COMMON AREA (5 PARCELS)	2.3974 ACRES 104,431 S.F.

STONEHOUSE
 SUBDIVISION PLAT
 OF
 MILL POND RUN RIGHT OF WAY
 BEING A SUBDIVISION
 OF PROPERTIES OWNED BY
 STONEHOUSE DEVELOPMENT COMPANY, LLC
 STONEHOUSE DISTRICT, JAMES CITY COUNTY
 DATE: 3/21/02 SCALE: 1" = 100'
 REVISED: 01-09-03
 SHEET 4 OF 4

#030010190
 90 PAGE 15