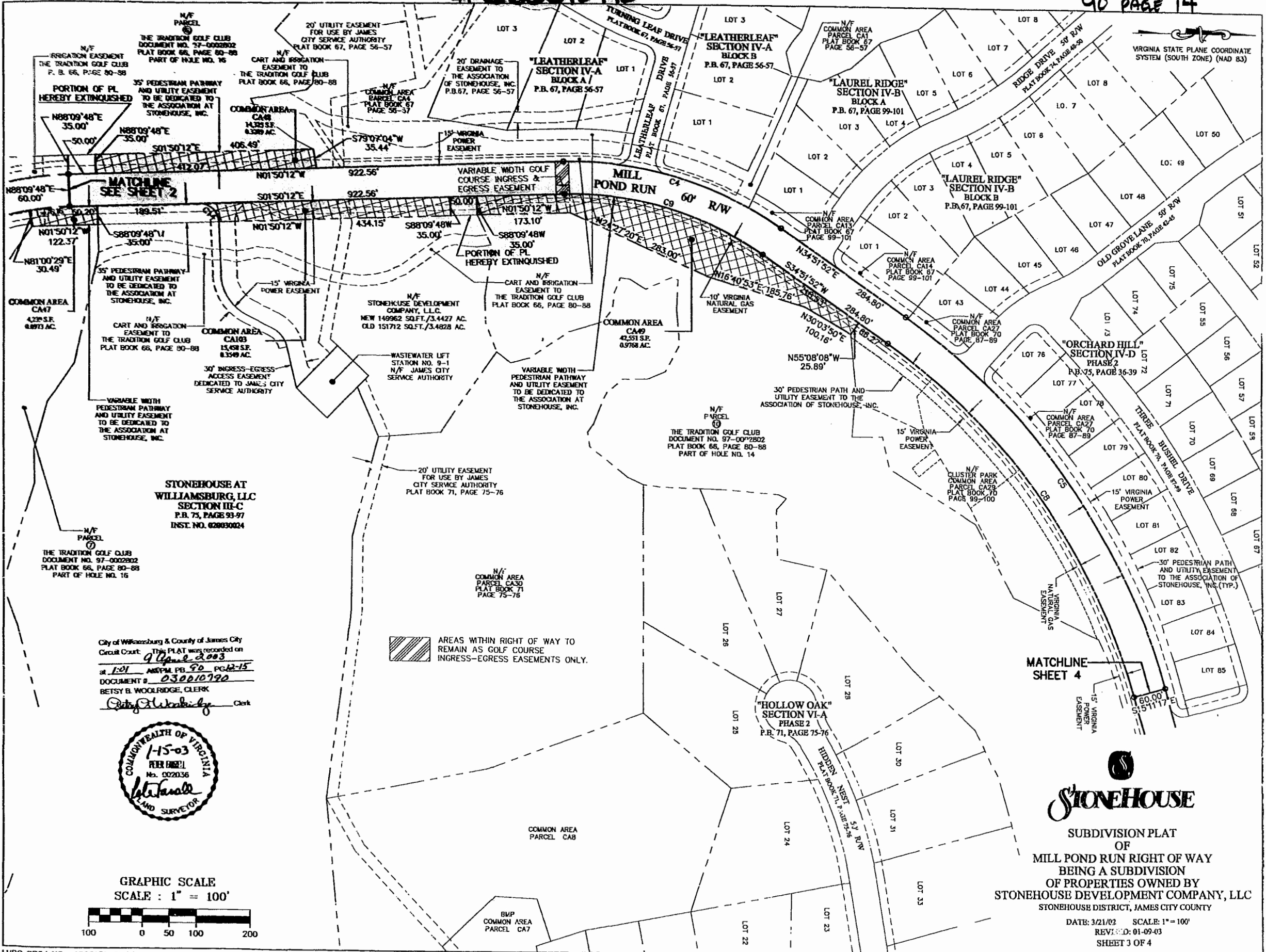


030010790

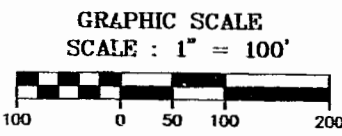
90 PAGE 14



VIRGINIA STATE PLANE COORDINATE SYSTEM (SOUTH ZONE) (NAD 83)

STONEHOUSE AT WILLIAMSBURG, LLC SECTION III-C
 P.B. 75, PAGE 93-97
 INST. NO. 020030024

City of Williamsburg & County of James City
 Circuit Court: This PLAT was recorded on
9 June 2003
 at 1:01 P.M. P.B. 70 PG. 15
 DOCUMENT # **030010790**
 BETSY B. WOOLRIDGE, CLERK
Betsy Woolridge Clerk



AREAS WITHIN RIGHT OF WAY TO REMAIN AS GOLF COURSE INGRESS-EGRESS EASEMENTS ONLY.

MATCHLINE SHEET 4



STONEHOUSE
 SUBDIVISION PLAT OF
 MILL POND RUN RIGHT OF WAY
 BEING A SUBDIVISION OF PROPERTIES OWNED BY
 STONEHOUSE DEVELOPMENT COMPANY, LLC
 STONEHOUSE DISTRICT, JAMES CITY COUNTY

DATE: 3/21/03 SCALE: 1" = 100'
 REVISED: 01-09-03
 SHEET 3 OF 4