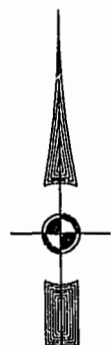


46-1-01-0-0001
"GREENSPRINGS PLANTATION"
(DB 322, PG 254)



EXIST. 20' JAMES CITY COUNTY SERVICE
AUTHORITY SAN. SEWER EASEMENT AS
SHOWN IN AS-BUILT LOCATION. D.B. 141 - PG. 8

EXIST. 20' DRAINAGE EASMT.
M.B. 65 - PG. 2

EXIST. 20' DRAINAGE EASEMENT
M.B. 65 - PG. 2

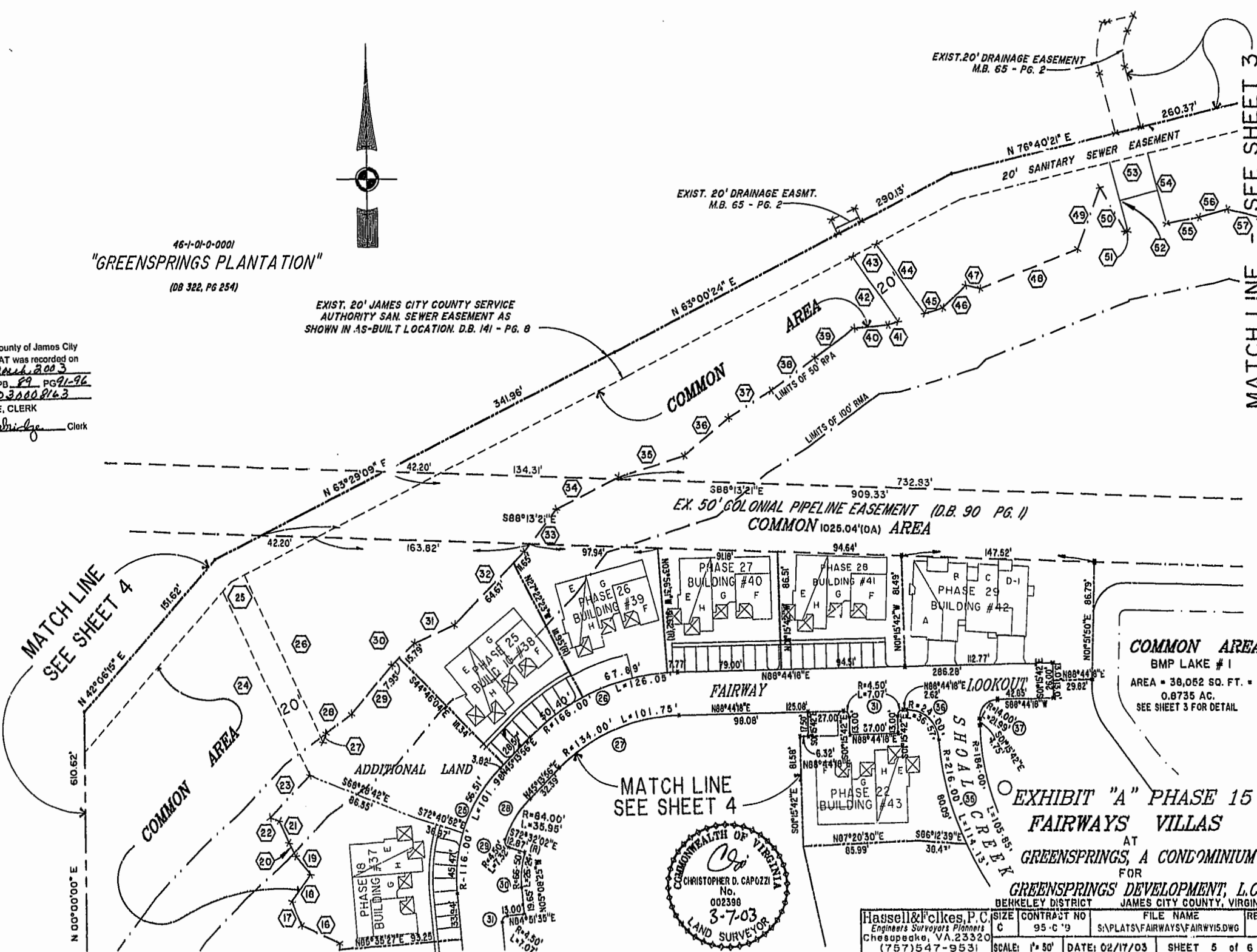
N 76°40'21" E
20' SANITARY SEWER EASEMENT

City of Williamsburg & County of James City
Circuit Court: This PLAT was recorded on
18 March 2003
at 11:30 AM, PM, PG 91-96
DOCUMENT # 030008163
BETSY B. WOOLRIDGE, CLERK
Betsy B. Woolridge Clerk

MATCH LINE - SEE SHEET 3

MATCH LINE
SEE SHEET 4

MATCH LINE
SEE SHEET 4



COMMON AREA
BMP LAKE # 1
AREA = 38,082 SQ. FT. =
0.8735 AC.
SEE SHEET 3 FOR DETAIL

EXHIBIT "A" PHASE 15
FAIRWAYS VILLAS
AT
GREENSPRINGS, A CONDOMINIUM
FOR
GREENSPRINGS DEVELOPMENT, L.C.
BERKELEY DISTRICT JAMES CITY COUNTY, VIRGINIA



Hassell & Cikes, P.C. Engineers Surveyors Planners Chesapeake, VA 23320 (757) 547-9531	SIZE C	CONTRACT NO 95-C-9	FILE NAME S:\PLATS\FAIRWAYS\FAIRWY15.DWG	REV.
SCALE: 1" = 50'	DATE: 02/17/03	SHEET 5 of 6		