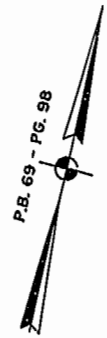


#030578

89 PAGE 87

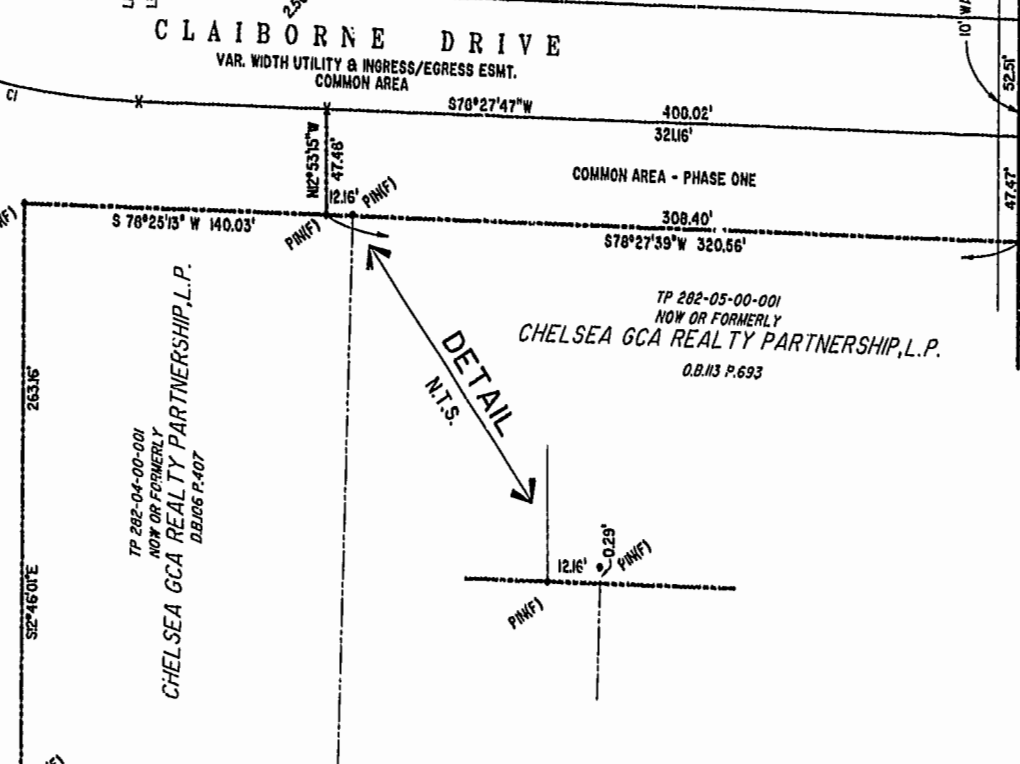
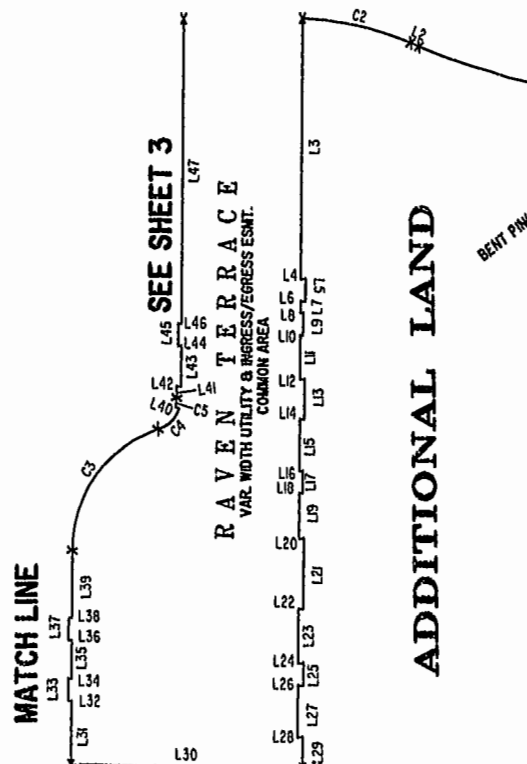
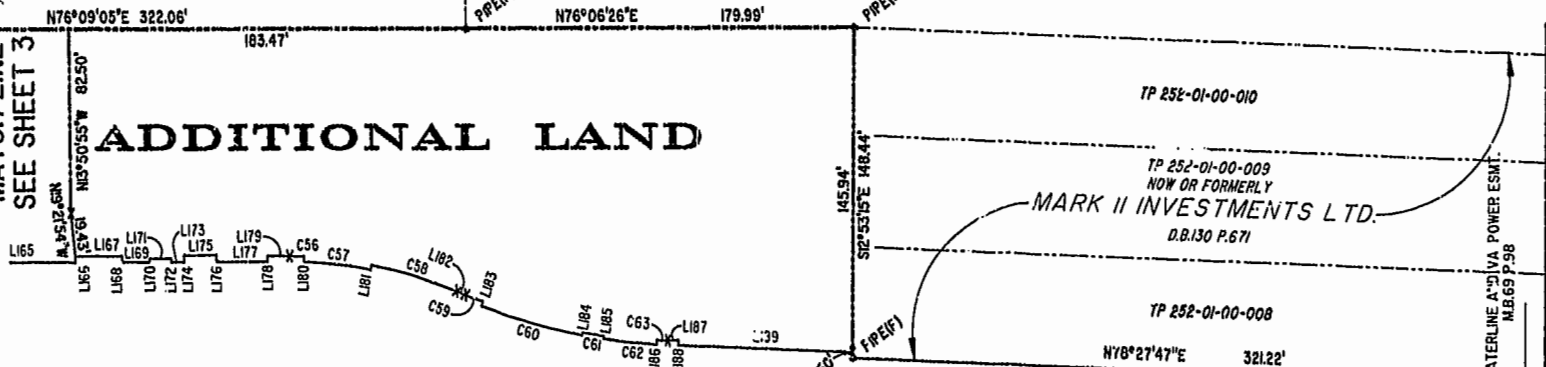
JAMES CITY COUNTY TP 33-3-01-29
NOW OR FORMERLY
GARY E. & CATHY L. NESTER
D.B.619 P.683

JAMES CITY COUNTY TP 33-3-01-24
NOW OR FORMERLY
GOLDEN KNIGHTS, INC.
D.B.568 P.316



MATCH LINE
SEE SHEET 3

ADDITIONAL LAND



U.S. RTE. 60
RICHMOND ROAD

P.B. 69 - PG. 98

MATCH LINE
SEE SHEET 3

TP 282-08-00-001
NOW OR FORMERLY
752 L.L.C.
INST. #980305

TP 282-04-00-001
NOW OR FORMERLY
CHELSEA GCA REALTY PARTNERSHIP, L.P.
D.B.106 P.407

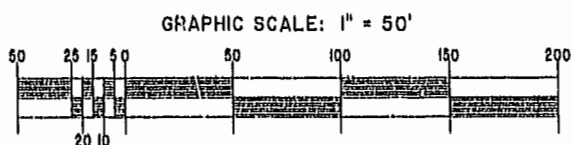
TP 282-05-00-001
NOW OR FORMERLY
CHELSEA GCA REALTY PARTNERSHIP, L.P.
D.B.113 P.693

DETAIL
N.T.S.

City of Williamsburg & County of James City
Circuit Court: This PLAT was recorded on
18 March 2003
at 11:13 AM/PM, PG. 87 of 90
DOCUMENT # 030578
BETSY B. WOOLRIDGE, CLERK
Betsy Woolridge, Dep. Clerk

EXHIBIT "A"
CLAIBORNE
(A CONDOMINIUM COMMUNITY)
PHASE THIRTEEN

CITY OF WILLIAMSBURG, VIRGINIA



| | | | | |
|--|-----------|----------------|--|------|
| Hassell & Folkes, P.C. Engineers Surveyors Planners Chesapeake, VA 23320 (757) 547-9531 | SIZE C | CONTRACT NO. | FILE NAME S:\PLATS\CLL\CLBORNE\PH-13-BLDG-20040 | REV. |
| SCALE: 1" = 50' | | DATE: 02/13/03 | SHEET 2 of 8 | |

A-1520

A-1520