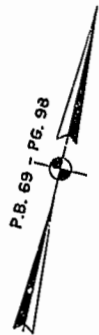


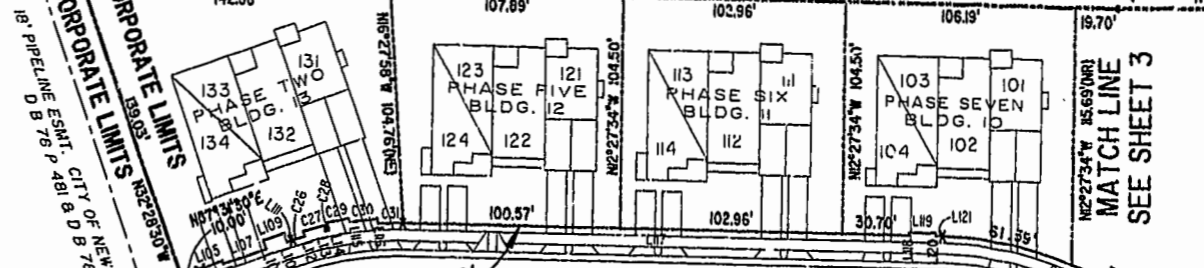
030544

89 page 84



JAMES CITY COUNTY TP 33-3-01-27
NOW OR FORMERLY
ARTCRAFT - STRATFORD, L.C.
D.B.649 P.470

CITY OF WILLIAMSBURG CORPORATE LIMITS
JAMES CITY COUNTY CORPORATE LIMITS
CITY OF NEWPORT NEWS



JAMES CITY COUNTY TP 33-3-01-30
NOW OR FORMERLY
PHILIP RICHARDSON CO., INC.
P.B. 69 P. 98
INST. #980312581

ADDITIONAL LAND

DETAIL
N.T.S.

STORMWATER EASEMENT
INST. #000896

TP 281-03-03-A
NOW OR FORMERLY
SALAH & CHANG TURKMANI
D.B. 94 P. 92

TP 281-10-00-5
NOW OR FORMERLY
752 L.L.C.
INST. #980305

TP 282-09-00-001
NOW OR FORMERLY
752 L.L.C.
INST. #980305

City of Williamsburg & County of James City
Circuit Court: This PLAT was recorded on
MARCH 12, 2003
at 1:32 AM P.B. 89 PG. 85
DOCUMENT # 030544
BETSY B. WOOLRIDGE, CLERK
Betsy B. Woolridge Clerk

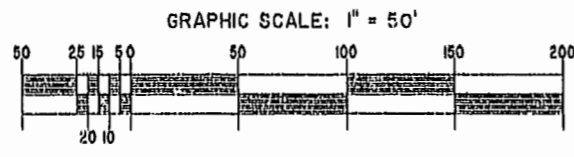


EXHIBIT "A"
CLAIBORNE
(A CONDOMINIUM COMMUNITY)
PHASE TWELVE
CITY OF WILLIAMSBURG, VIRGINIA

Hassell & Polkes, P.C. Engineers Surveyors Planners Chesapeake, VA. 23320 (757) 547-9531	SCALE: 1" = 50'	DATE: 02/13/03	FILE NAME S:\PLATS\CLAIBORNE\11-12-BLDG-12.DWG	REV.
---	-----------------	----------------	---	------

A-1520

A-1520