

#030006189

89 PAGE 63

STATE OF VIRGINIA COUNTY OF JAMES CITY  
IN THE CLERK'S OFFICE OF THE CIRCUIT COURT OF THE  
COUNTY OF JAMES CITY THIS 27 DAY OF February  
2003, THE MAP SHOWN HEREON WAS PRESENTED AND ADMITTED  
TO THE RECORD AS THE LAW DIRECTS. @ 2:04 PM

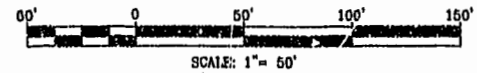
City of Williamsburg & County of James City  
Circuit Court: This PLAT was recorded on  
27 Feb 2003  
at 2:04 PM/PM. PB 89 PG 63  
DOCUMENT # 030006189  
BETSY B. WOOLRIDGE, CLERK  
Betsy B. Woolridge Clerk

NOTE "A": VARIABLE WIDTH J.C.S.A.  
UTILITY EASEMENT  
NOTE "C": PROPERTY LINE HEREBY  
EXTINGUISHED

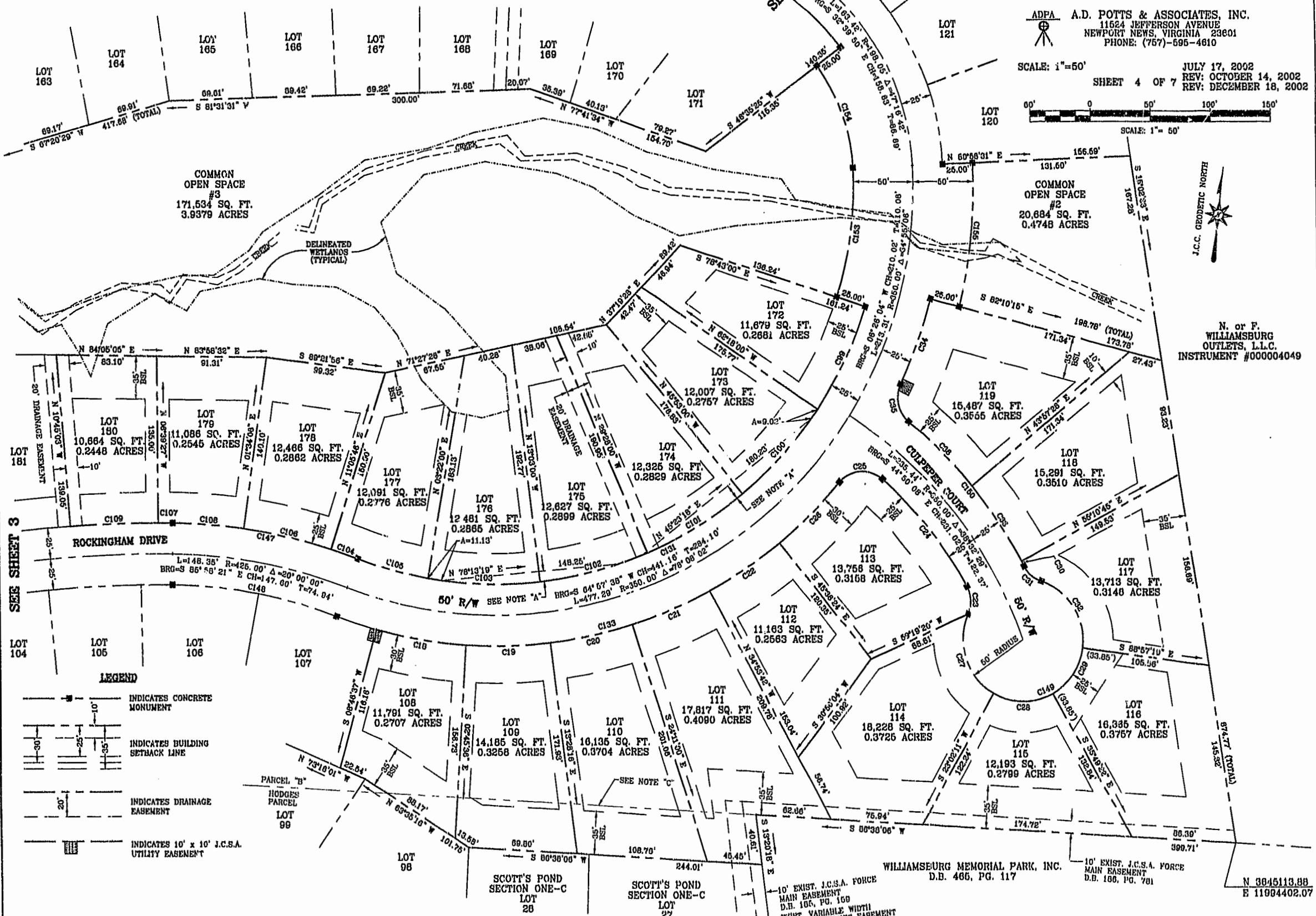
# SCOTT'S POND SECTION TWO POWHATAN DISTRICT JAMES CITY COUNTY, VIRGINIA

ADPA A.D. POTTS & ASSOCIATES, INC.  
11624 JEFFERSON AVENUE  
NEWPORT NEWS, VIRGINIA 23601  
PHONE: (757)-695-4610

SCALE: 1"=50'  
SHEET 4 OF 7  
JULY 17, 2002  
REV: OCTOBER 14, 2002  
REV: DECEMBER 18, 2002



N. or F.  
WILLIAMSBURG  
OUTLETS, L.L.C.  
INSTRUMENT #000004049



SEE SHEET 3

SEE SHEET 5

### LEGEND

- INDICATES CONCRETE MONUMENT
- INDICATES BUILDING SETBACK LINE
- INDICATES DRAINAGE EASEMENT
- INDICATES 10' x 10' J.C.S.A. UTILITY EASEMENT

SPREC2.DWG

JOB NO. 02-328 FILE NO. 10-1021