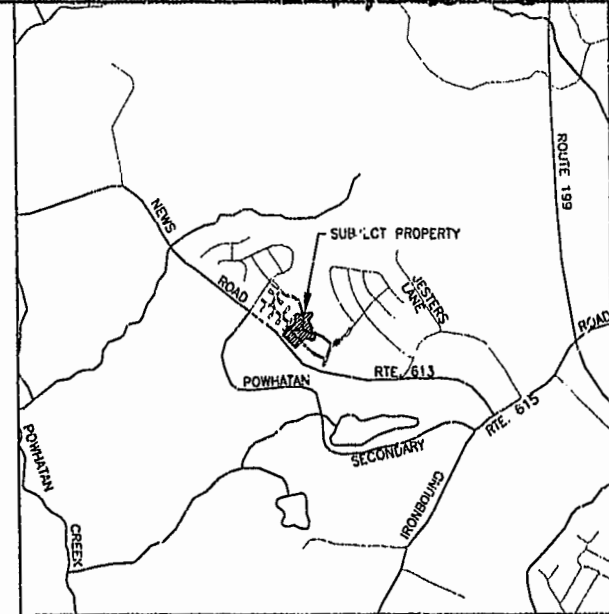
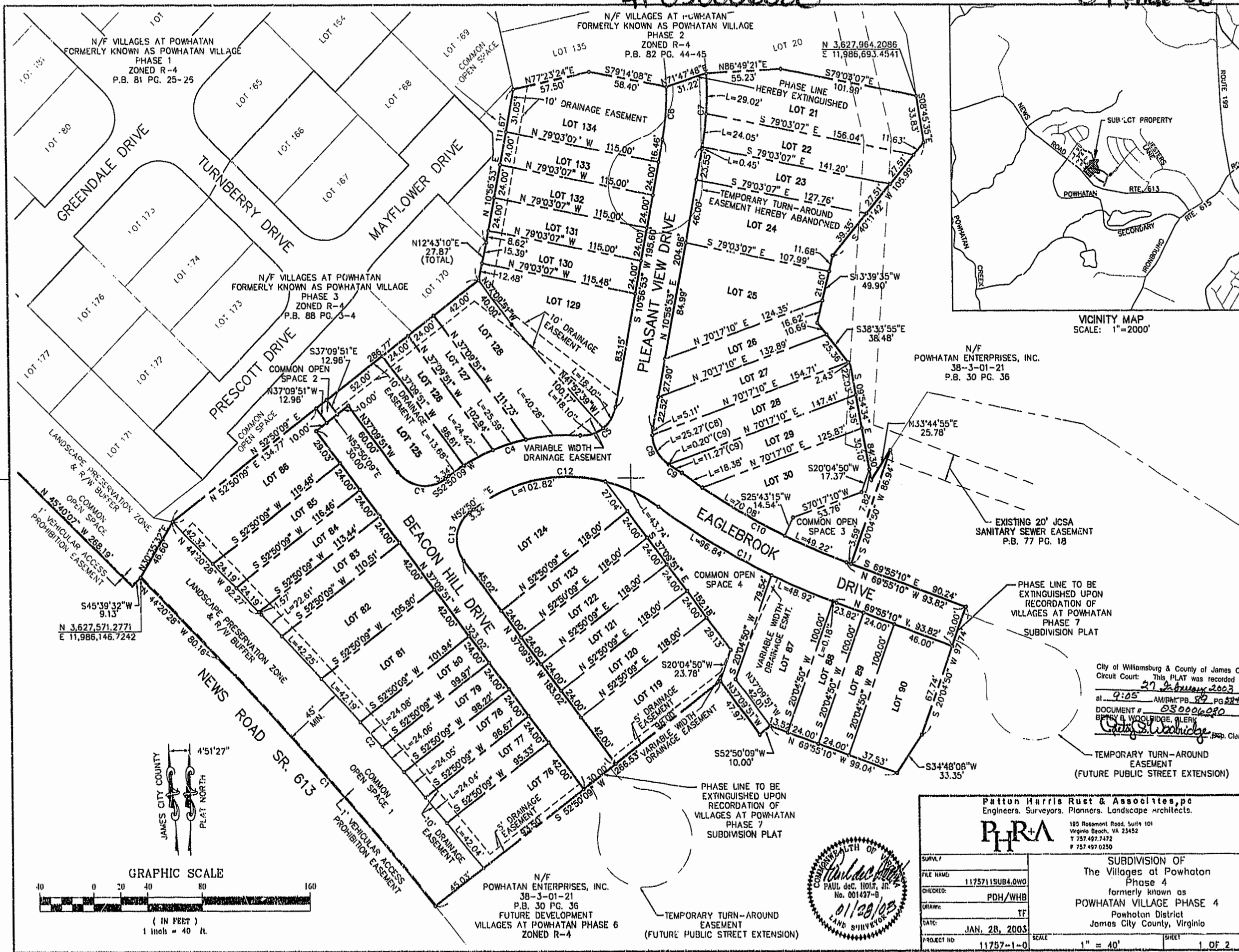


#030006080

89 PAGE 58



N/F POWHATAN ENTERPRISES, INC.
38-3-01-21
P.B. 30 PG. 36

EXISTING 20' JCSA
SANITARY SEWER EASEMENT
P.B. 77 PG. 18

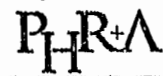
PHASE LINE TO BE
EXTINGUISHED UPON
RECORDATION OF
VILLAGES AT POWHATAN
PHASE 7
SUBDIVISION PLAT

PHASE LINE TO BE
EXTINGUISHED UPON
RECORDATION OF
VILLAGES AT POWHATAN
PHASE 7
SUBDIVISION PLAT

City of Williamsburg & County of James City
Circuit Court: This PLAT was recorded on
27 February 2003
at 9:05 AM/PM/PB 89 PG 58+59
DOCUMENT # 030006080
BRYN B. WOOLRIDGE, CLERK
Bryn B. Woolridge Prop. Clerk

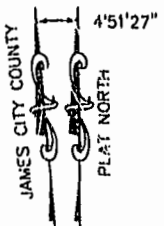
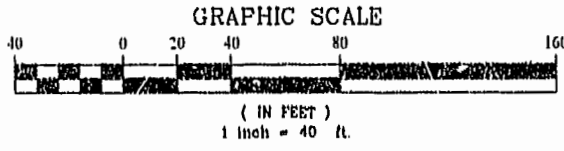
TEMPORARY TURN-AROUND
EASEMENT
(FUTURE PUBLIC STREET EXTENSION)

Patton Harris Rust & Associates, p.c.
Engineers, Surveyors, Planners, Landscape architects.



195 Rosemont Road, Suite 101
Virginia Beach, VA 23452
T 757.497.7472
F 757.497.0250

SUBDIVISION OF The Villages at Powhatan Phase 4 formerly known as POWHATAN VILLAGE PHASE 4 Powhatan District James City County, Virginia	
SURV. #	
FILE NAME:	1175711SUBA.DWG
CHECKED:	PDH/WHB
DATE:	JAN. 28, 2003
PROJECT NO:	11757-1-0
SCALE:	1" = 40'
SHEET:	1 OF 2



N/F POWHATAN ENTERPRISES, INC.
38-3-01-21
P.B. 30 PG. 36
FUTURE DEVELOPMENT
VILLAGES AT POWHATAN PHASE 6
ZONED R-4

TEMPORARY TURN-AROUND
EASEMENT
(FUTURE PUBLIC STREET EXTENSION)