

#030005384

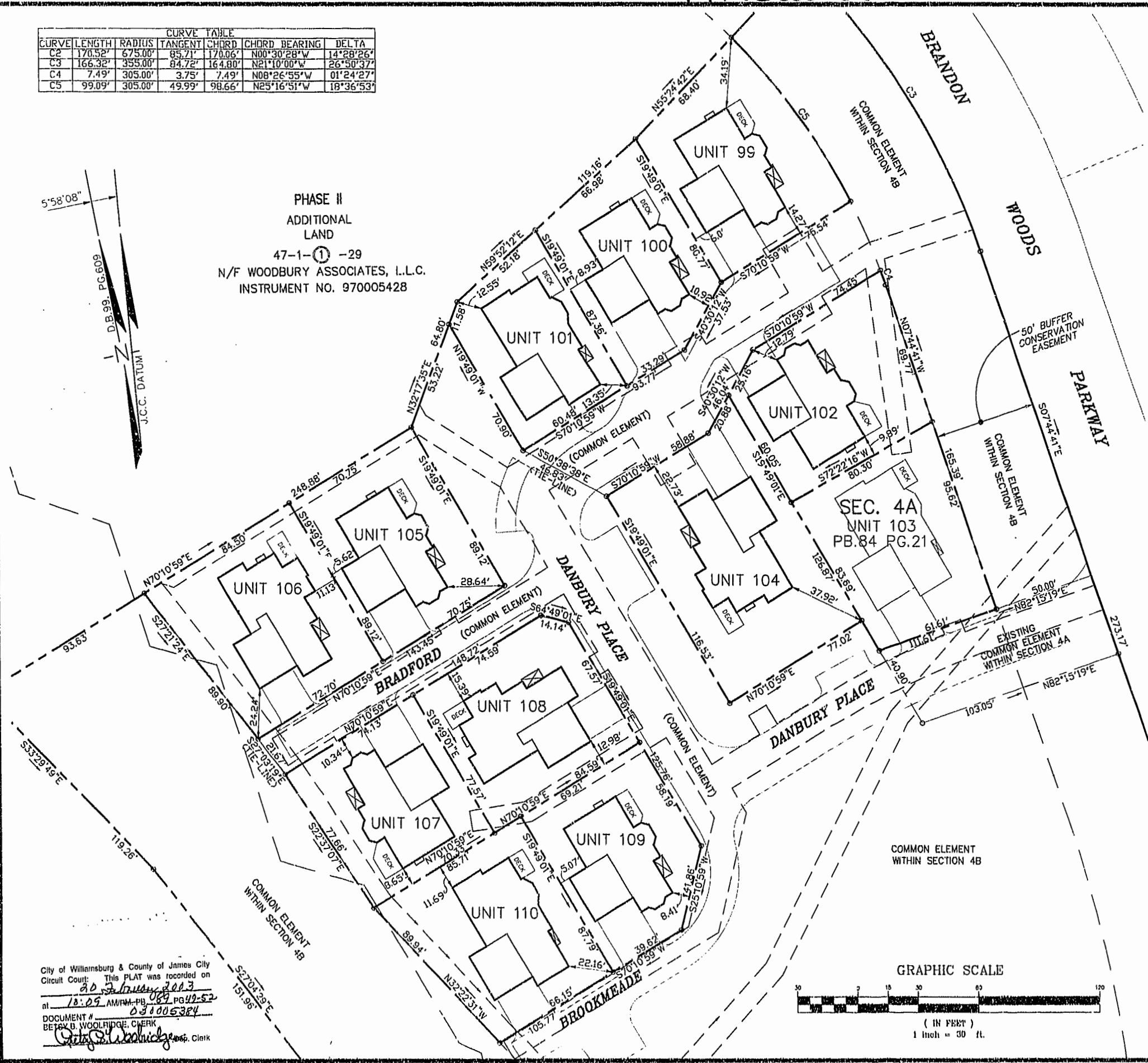
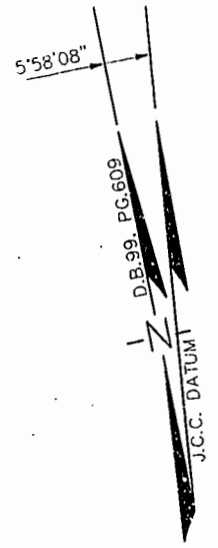
89 PAGE 51

CURVE	LENGTH	RADIUS	TANGENT	CHORD	CHORD BEARING	DELTA
C2	170.52'	675.00'	85.71'	170.06'	N00°30'28"W	14°28'26"
C3	166.32'	355.00'	84.72'	164.80'	N21°10'00"W	26°50'37"
C4	7.49'	305.00'	3.75'	7.49'	N08°26'55"W	01°24'27"
C5	99.09'	305.00'	49.99'	98.66'	N25°16'51"W	18°36'53"

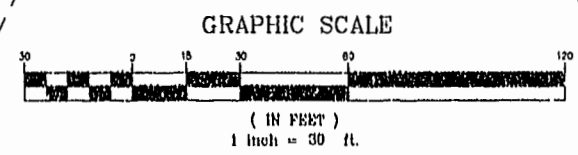
CONDOMINIUM PLAT  
OF  
SECTION 4B  
(A PORTION OF SECTION 2, PHASE II)  
BRANDON WOODS  
JAMES CITY COUNTY, VIRGINIA  
SCALE: 1"=30' DATE: 2/7/03  
REVISED: 2/14/03  
SHEET 3 OF 4



PHASE II  
ADDITIONAL  
LAND  
47-1-①-29  
N/F WOODBURY ASSOCIATES, L.L.C.  
INSTRUMENT NO. 970005428



City of Williamsburg & County of James City  
Circuit Court: This PLAT was recorded on  
20 February 2003  
at 10:09 AM by 089 PG 42-52  
DOCUMENT # 031005384  
BETSY B. WOOLRIDGE, CLERK



**LANDMARK  
DESIGN GROUP**  
Engineers • Planners • Surveyors  
Landscape Architects • Environmental Consultants  
4029 IRONBOUND ROAD SUITE 100  
WILLIAMSBURG, VA 23188  
TEL (757) 253-2975 FAX (757) 229-0049