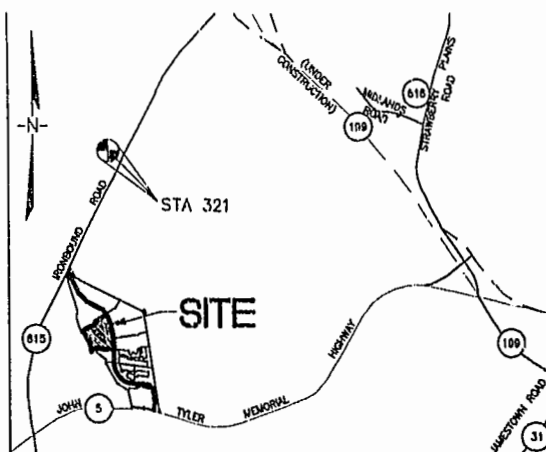


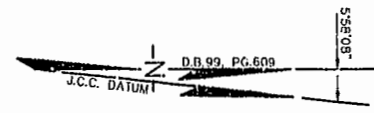
#030005384

89 PAGE 49



VICINITY MAP 1"=2000'

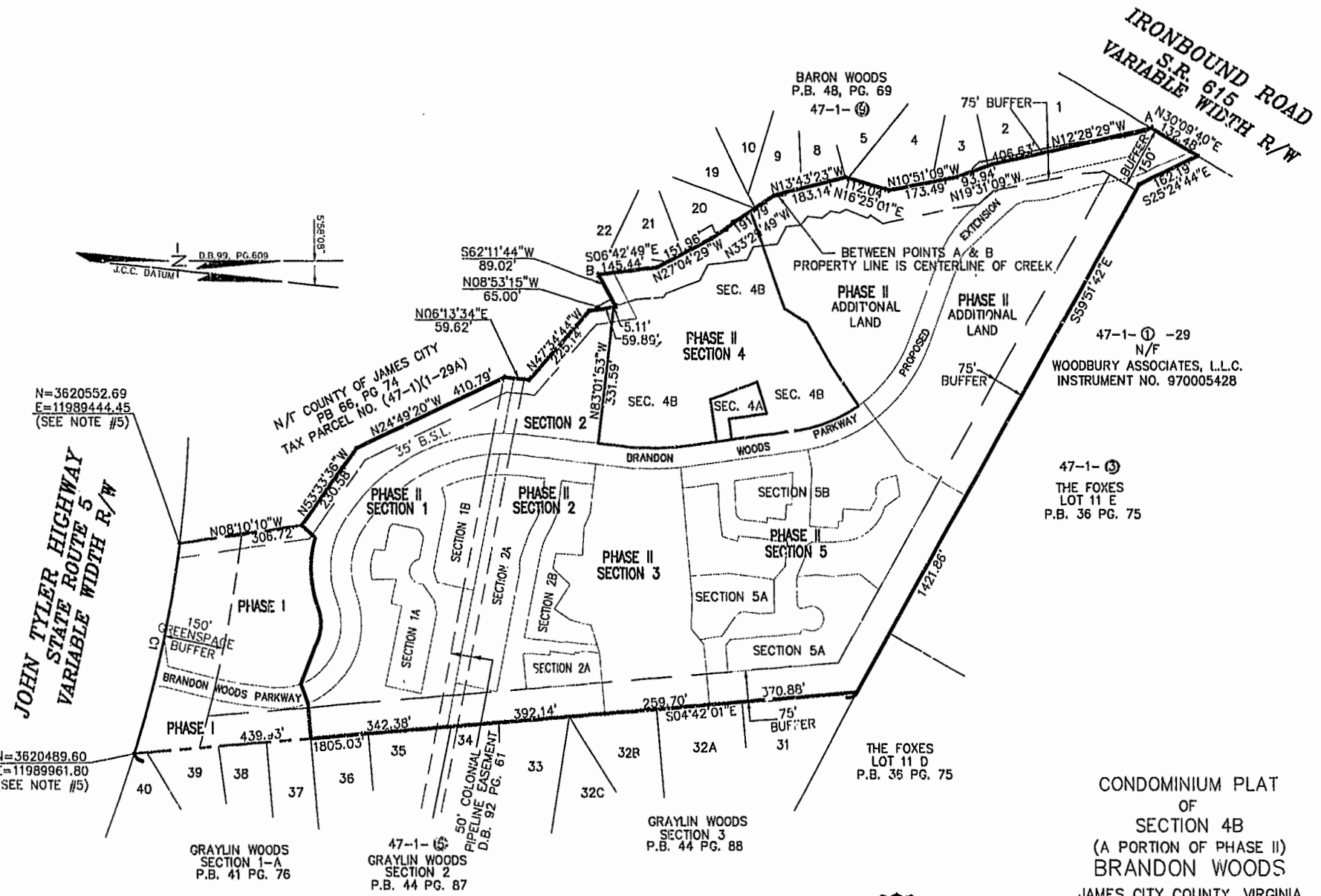
CURVE TABLE						
CURVE	LENGTH	RADIUS	TANGENT	CHORD BEARING	CHORD	DELTA
CI	521.88'	2904.79'	261.65'	N77°04'44"W	521.18'	10°17'38'



JOHN TYLER HIGHWAY
STATE ROUTE 5
VARIABLE WIDTH R/W

N=3620552.69
E=11989444.45
(SEE NOTE #5)

N=3620489.60
E=11989961.80
(SEE NOTE #5)

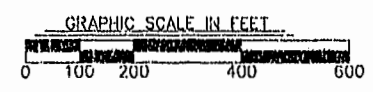


CONDOMINIUM PLAT
OF
SECTION 4B
(A PORTION OF PHASE II)
BRANDON WOODS

JAMES CITY COUNTY, VIRGINIA
SCALE: 1"=200' DATE: 2/7/03
REVISED: 2/14/03
SHEET 1 OF 4



City of Williamsburg & County of James City
Circuit Court: This PLAT was recorded on
20 February 2003
at 10:09 AM P.M. PG. 48-52
DOCUMENT # 030005384
OFFY B. WOOLIDGE, CLERK
Offy B. Woolidge Dep. Clerk



LANDMARK
DESIGN GROUP
Engineers • Planners • Surveyors
Landscape Architects • Environmental Consultants
4029 IRONBOUND ROAD SUITE 100
WILLIAMSBURG, VA 23188
TEL (757) 253-2975 FAX(757) 229-0049