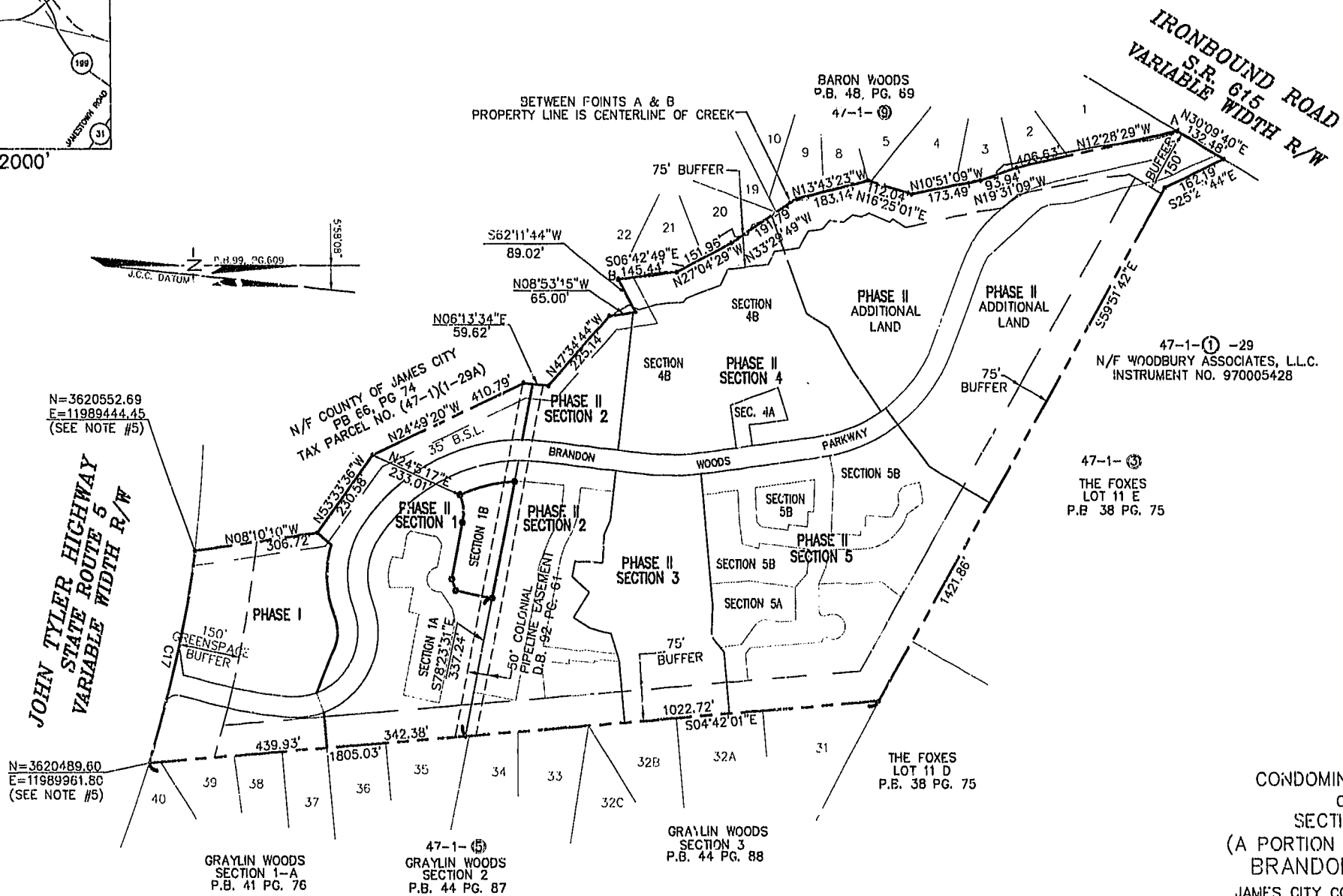
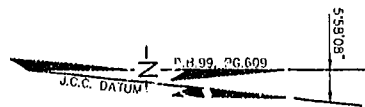


CURVE TABLE						
CURVE	LENGTH	RADIUS	TANGENT	CHORD BEARING	CHORD	DELTA
C17	521.88'	2904.79'	261.65'	N77°04'44"W	521.18'	10°17'38"



N=3620552.69  
E=11989444.45  
(SEE NOTE #5)

N=3620489.60  
E=11989961.80  
(SEE NOTE #5)

JOHN TYLER HIGHWAY  
STATE ROUTE 5  
VARIABLE WIDTH R/W

47-1-①-29  
N/F WOODBURY ASSOCIATES, L.L.C.  
INSTRUMENT NO. 970005428

47-1-③  
THE FOXES  
LOT 11 E  
P.B. 38 PG. 75

THE FOXES  
LOT 11 D  
P.B. 38 PG. 75

GRAYLIN WOODS  
SECTION 1-A  
P.B. 41 PG. 76

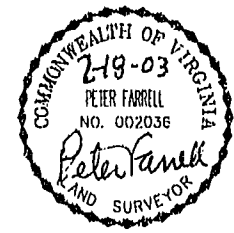
47-1-⑤  
GRAYLIN WOODS  
SECTION 2  
P.B. 44 PG. 87

GRAYLIN WOODS  
SECTION 3  
P.B. 44 PG. 88

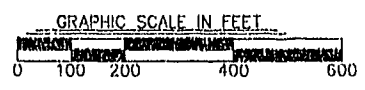
CONDOMINIUM PLAT  
OF  
SECTION 1B  
(A PORTION OF PHASE II)  
BRANDON WOODS  
JAMES CITY COUNTY, VIRGINIA  
SCALE: 1"=200' DATE: 2/7/03  
REVISED 2/14/03

SHEET 1 OF 4

STATE OF VIRGINIA, COUNTY OF JAMES CITY  
IN THE CLERK'S OFFICE OF THE CIRCUIT COURT THE PLAT  
SHOWN HEREON WAS PRESENTED AND ADMITTED TO RECORD  
BY Peter Farrell 2003 AS THE LAW DIRECTS.  
TESTEE: Peter Farrell @ 9:57AM  
CLERK  
PLAT BOOK 85 PAGE 45-48



City of Williamsburg & County of James City  
Circuit Court: This PLAT was recorded on  
20 February 2003  
at 9:57 AM P.M. P.B. 84 PG. 45-48  
DOCUMENT # 030005383  
Petsy B. Woolridge CLERK  
Petsy B. Woolridge Clerk



**LANDMARK DESIGN GROUP**  
Engineers • Planners • Surveyors  
Landscape Architects • Environmental Consultants  
4029 IRONBOUND ROAD SUITE 100  
WILLIAMSBURG, VA 23188  
TEL (757) 253-2975 FAX(757) 229-0049