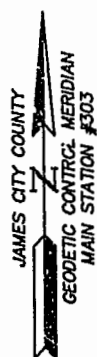


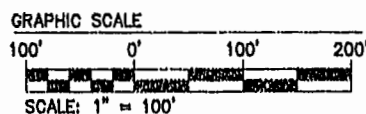
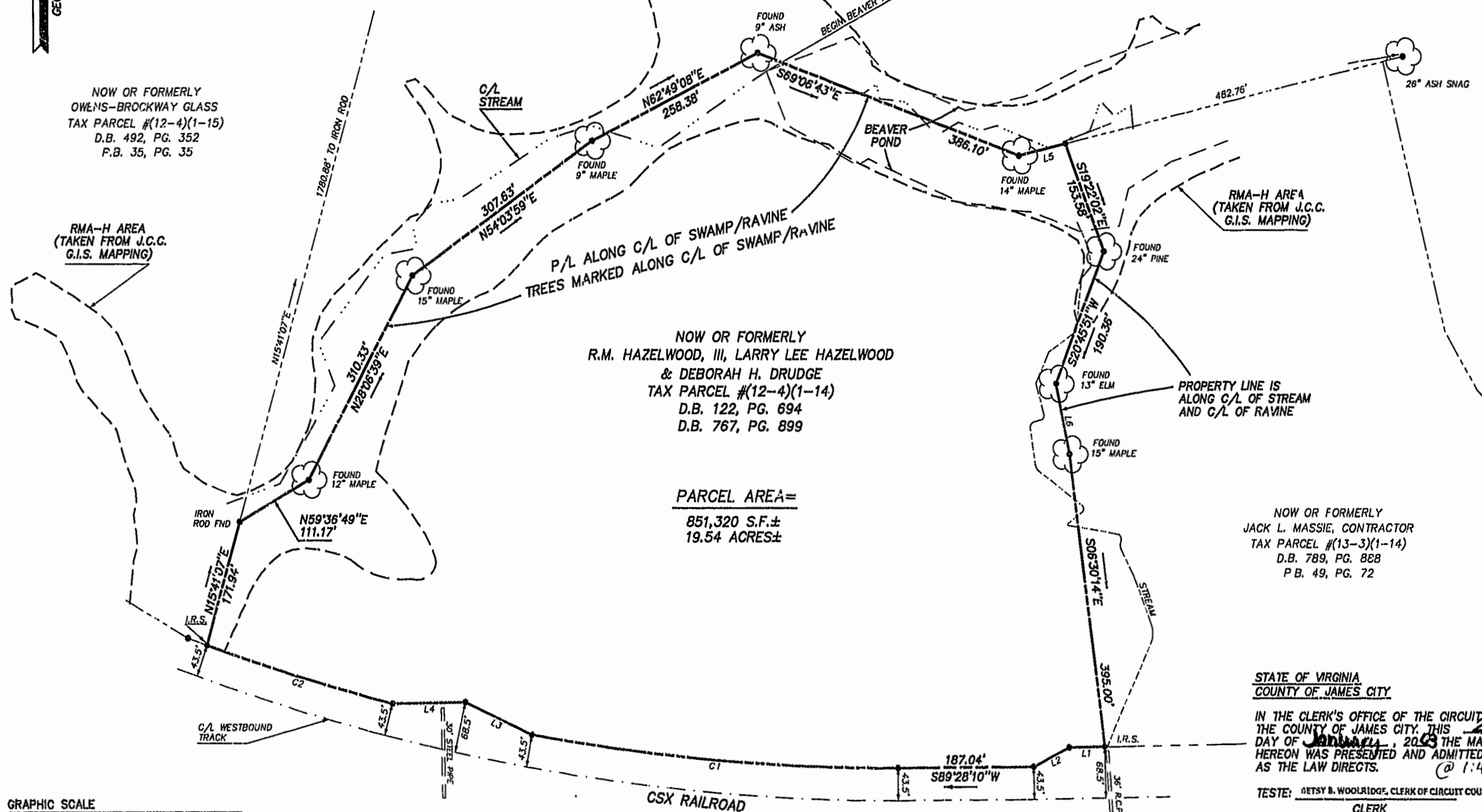
#030002256

89 PAGE 34



NOW OR FORMERLY
OWENS-BROCKWAY GLASS
TAX PARCEL #12-4(1-15)
D.B. 492, PG. 352
P.B. 35, PG. 35

RMA-H AREA
(TAKEN FROM J.C.C.
G.I.S. MAPPING)



NOW OR FORMERLY
GEORGE M. HANKINS, JR. ET ALS
TAX PARCEL #12-4(1-15)
D.B. 763, PG. 884-895
INSTR. #990025087
P.B. 77, PG. 21

NOW OR FORMERLY
R.M. HAZELWOOD, III, LARRY LEE HAZELWOOD
& DEBORAH H. DRUDGE
TAX PARCEL #12-4(1-14)
D.B. 122, PG. 694
D.B. 767, PG. 899

PARCEL AREA=
851,320 S.F.±
19.54 ACRES±

NUMBER	DELTA	RADIUS	LENGTH	TANGENT	CHORD	CH. BEARING
C1	10°19'28"	2821.93	508.50	214.94	507.82	N84°53'16"W
C2	05°25'52"	2821.93	267.50	133.65	267.40	N73°00'39"W

LINE TABLE

NUMBER	BEARING	DISTANCE
L1	S88°54'36"W	48.51'
L2	S62°20'42"W	55.90'
L3	N64°25'21"W	101.18'
L4	S88°58'14"W	101.18'
L5	N75°59'23"E	66.11'
L6	S11°06'30"E	95.50'

NOW OR FORMERLY
JACK L. MASSIE, CONTRACTOR
TAX PARCEL #13-3(1-14)
D.B. 789, PG. 888
P.B. 49, PG. 72

STATE OF VIRGINIA
COUNTY OF JAMES CITY

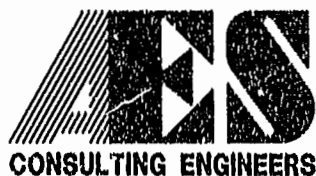
IN THE CLERK'S OFFICE OF THE CIRCUIT COURT OF
THE COUNTY OF JAMES CITY, THIS 23rd
DAY OF January, 2003 THE MAP SHOWN
HEREON WAS PRESENTED AND ADMITTED TO RECORD
AS THE LAW DIRECTS. @ 1:48 PM

TESTE: BETSY B. WOOLRIDGE, CLERK OF CIRCUIT COURT

CLERK

Betsy B. Woolridge
BY

PLAT BOOK 89, PAGE 34



5248 Olde Towne Road, Suite 1
Williamsburg, Virginia 23188
(757) 253-0040
Fax (757) 220-8994

PLAT OF SURVEY
A PARCEL CONTAINING 19.54 ACRES±
OWNED BY R.M. HAZELWOOD, III, ET ALS
FOR CONVEYANCE TO
J.S.G. CORPORATION

STONEHOUSE DISTRICT JAMES CITY COUNTY VIRGINIA



City of Williamsburg & County of James City
Circuit Court. This PLAT was recorded on
January 23, 2003
at 1:48 AM/PM PG 34
DOCUMENT # 030002256
BETSY B. WOOLRIDGE, CLERK
Betsy B. Woolridge Clerk
No. DATE REVISION / COMMENT / NOTE BY

Designed AES	Drawn JKR
Scale 1"=100'	Date 12/16/2002
Project No. 9247	
Drawing No. 1 OF 1	