

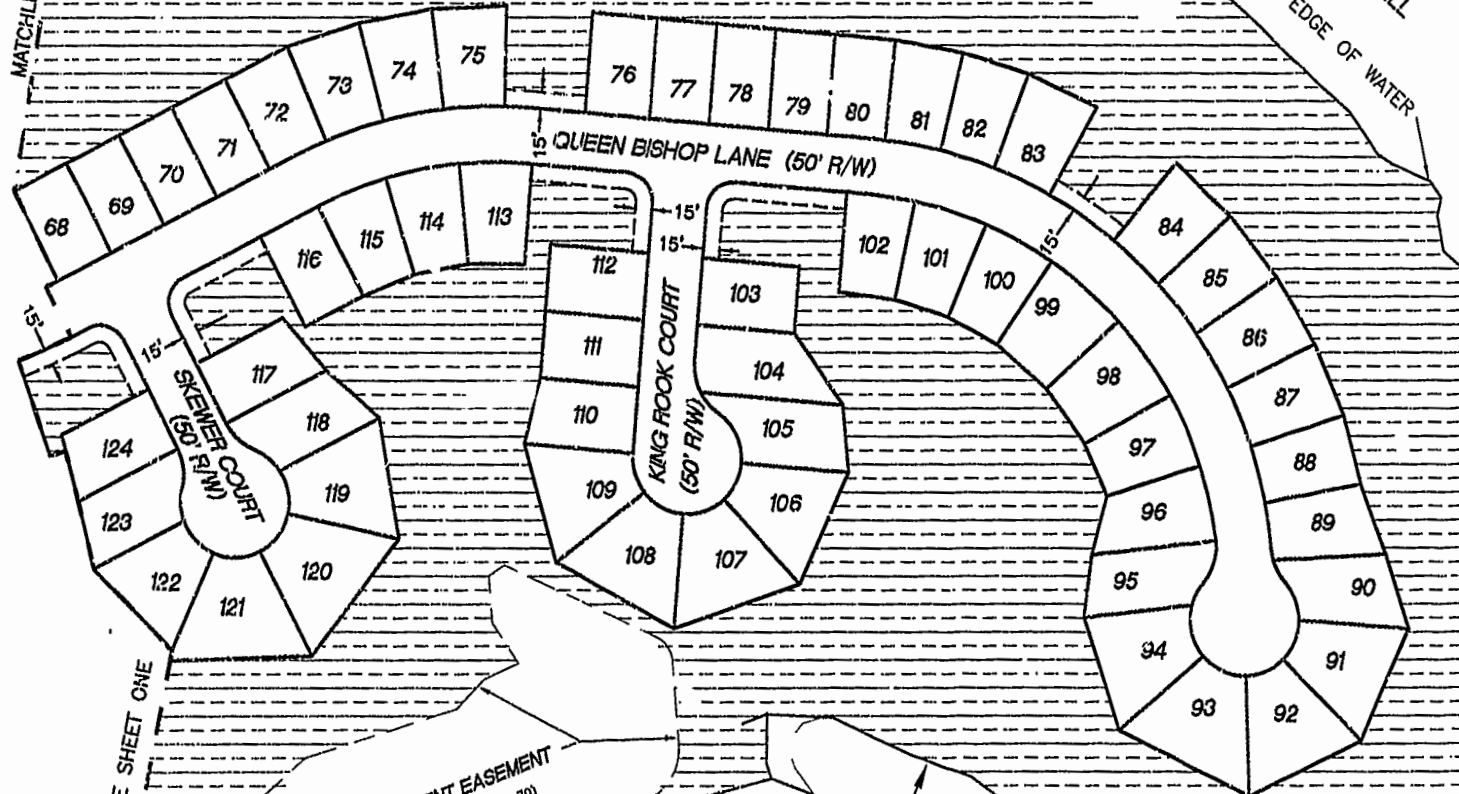
PROPERTY LINE IS C/L STREAM  
ROLLING WOODS  
(M.B. 46, PG. 81)

NATURAL OPEN SPACE AND  
CONSERVATION AREA

P.B. 16, PG. 20

MATCHLINE SHEET ONE

PROPERTY LINE IS EDGE OF WATER  
LAKE POWELL



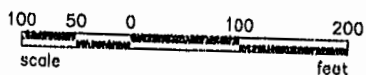
MATCHLINE SHEET ONE

IMPOUNDMENT EASEMENT  
(P.B. 71, PG. 69 & 70)

PROPERTY LINE IS  
EDGE OF WATER

PROPERTY LINE

EXHIBIT 1  
TO DEED OF EASEMENT  
FOR NATURAL OPEN SPACE  
AND CONSERVATION AREA  
LAKE POWELL FOREST  
JAMESTOWN MAGISTERIAL DISTRICT  
JAMES CITY COUNTY, VIRGINIA



NOW OR FORMERLY  
LAKE POWELL POINTE SUBDIVISION

City of Williamsburg & County of James City  
Circuit Court: This PLAT was recorded on  
*22 January 2003*  
at *2:20* AM P.M. P.B. *810* PG. *27+28*  
DOCUMENT # *030001976*  
HELSY B. WOOLRIDGE, CLERK  
*Helsey B. Woolridge*, Dep. Clerk

SHEET 2 OF 2

SCALE : 1" = 100' DEC. 19, 2002  
Horton & Dodd, P.C.  
SURVEYORS, ENGINEERS & PLANNERS  
300 GEORGE WASHINGTON HWY. N.  
CHESAPEAKE, VIRGINIA  
(757) 481-4535 [www.hortondodd.com](http://www.hortondodd.com)  
COPYRIGHT (c), HORTON & DODD, P.C. ALL RIGHTS RESERVED. REPRODUCTION OR USE OF THE CONTENTS OF THIS DOCUMENT, OR ADDITIONS OR DELETIONS TO THIS DOCUMENT, IN WHOLE OR IN PART, WITHOUT WRITTEN CONSENT OF HORTON & DODD, P.C. IS PROHIBITED.