

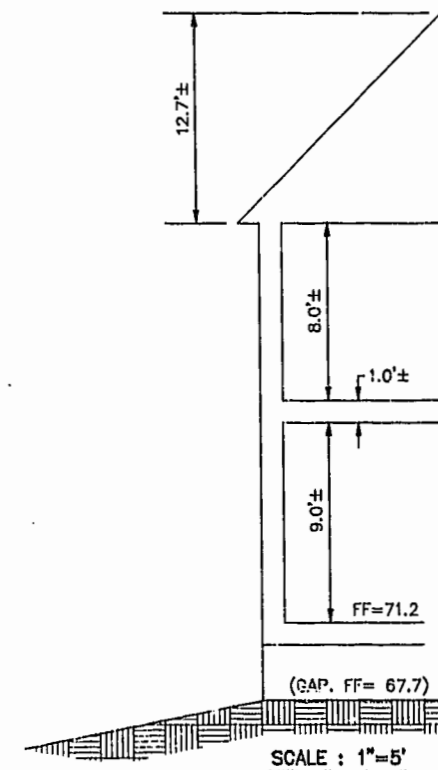
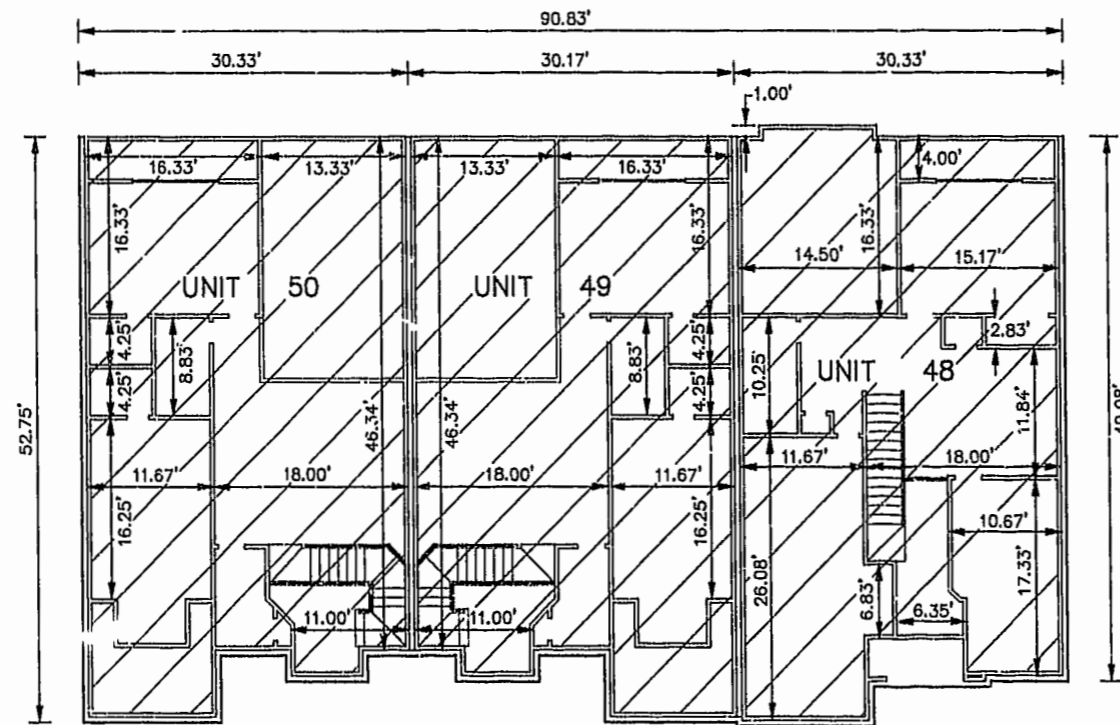
EXHIBIT B-15
 SUPPLEMENTAL CONDOMINIUM PLAN
 OF
 WYNDHAM PLANTATION
 CONDOMINIUM
 WILLIAMSBURG, VIRGINIA
 SCALE: 1"=10' JANUARY 10, 2003
 JOHN E. SIRINE AND ASSOCIATES, LTD.
 SURVEYORS • ENGINEERS • PLANNERS
 VIRGINIA BEACH, VIRGINIA
 (757) 486-4910

NOTES:

- BUILDING DIMENSIONS SHOWN HEREON ARE INTERIOR DIMENSIONS. THESE DIMENSIONS ARE IN FEET AND WERE TAKEN FROM PLANS SUPPLIED ENTITLED "WYNDHAM PLANTATION AT WILLIAMSBURG, FLOOR PLANS" BY PROGRESSIVE DESIGNS DATED 11/19/98.
- INTERIOR UNIT CONFIGURATIONS AND PARTITIONS AS DEPICTED HEREON ARE FOR THE PURPOSE OF ILLUSTRATION ONLY AND MAY NOT REPRESENT THE INTERIOR OF A UNIT AS ACTUALLY CONSTRUCTED.

SECOND FLOOR - BUILDING 2

SCALE: 1"=10'



UNIT AREA

THE UNDERSIGNED CERTIFIES THAT THESE PLANS ARE ACCURATE AND COMPLY WITH THE PROVISIONS OF CODE OF VIRGINIA, SECTION 55-79.58.B AND THAT ALL UNITS OR PORTIONS THEREOF DEPICTED HEREON AND ALL COMMON ELEMENTS HAVE BEEN SUBSTANTIALLY COMPLETED, UNLESS OTHERWISE NOTED.

PHASE	UNIT No.	UNIT ADDRESS	UNIT AREA
17	48	112 ZELKOVA ROAD	1,997 S.F.
17	49	116 ZELKOVA ROAD	1,957 S.F.
17	50	120 ZELKOVA ROAD	1,957 S.F.

City of Williamsburg & County of James City
 Circuit Court: This PLAT was recorded on
 21 January 2003
 at 3:39 AM/PM, PB 89, PG 23-26
 DOCUMENT # 030117
 BETSY B. WOOLFRIDGE, CLERK
 Betsy B. Woolfridge, Dep. Clerk

SIGNED: JEFFREY D. WILLIAMS
 JEFFREY D. WILLIAMS, L.S.

