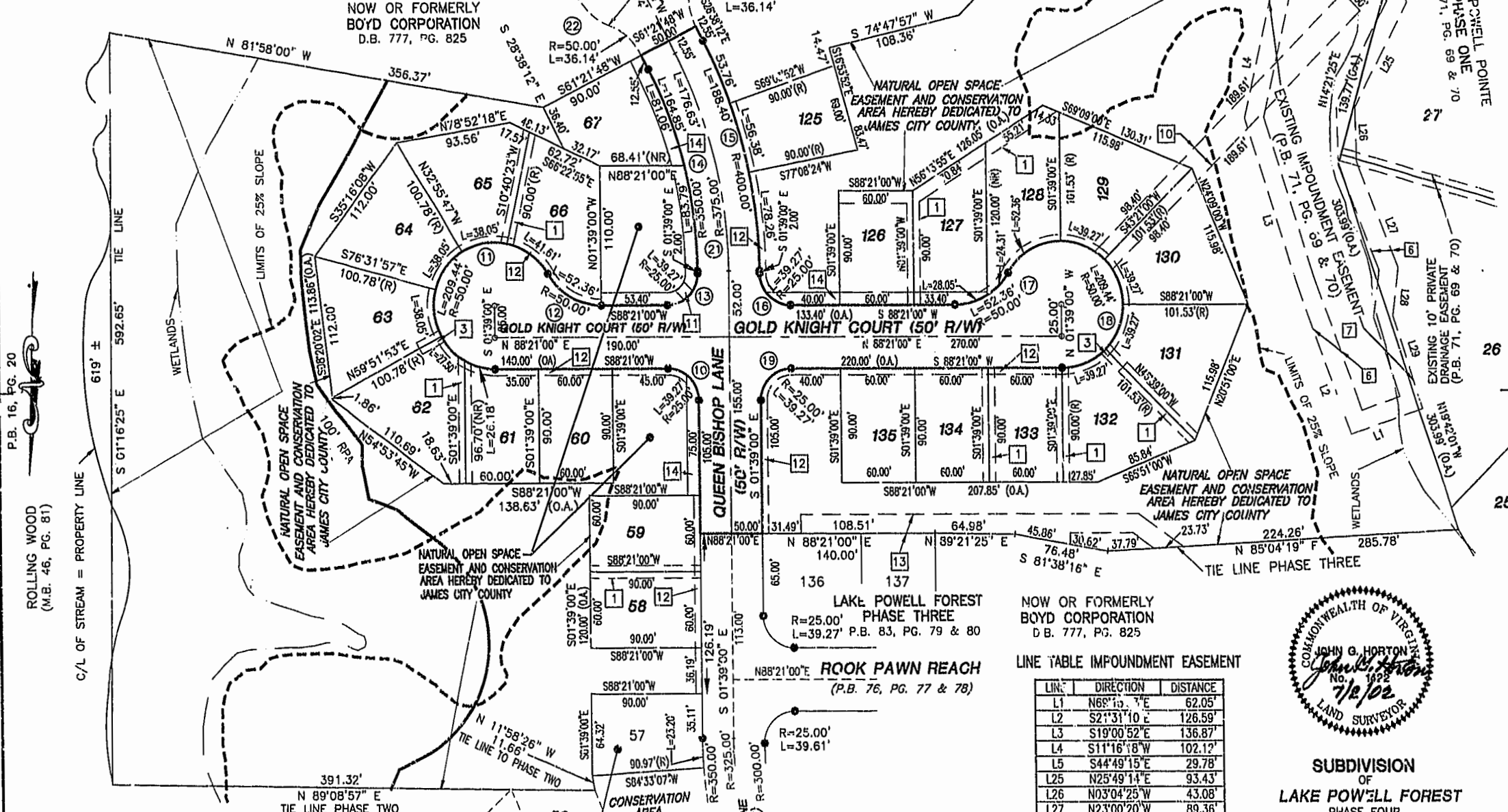


EASEMENT NOTATIONS

- 1 10' PRIVATE DRAINAGE EASEMENT
- 2 10' X 20' VIRGINIA POWER EASEMENT
- 6 EXISTING 15' MAINTENANCE EASEMENT (P.B. 71, PG. 69 & 70)
- 7 EXISTING IMPOUNDMENT EASEMENT (P.B. 71, PG. 69 & 70)
- 10 20' DRAINAGE EASEMENT HEREBY DEDICATED TO HOMEOWNERS ASSOCIATION
- 11 10' X 10' VIRGINIA POWER EASEMENT
- 12 5' UTILITY EASEMENT HEREBY DEDICATED EXCLUSIVELY TO JAMES CITY COUNTY SERVICE AUTHORITY
- 13 EXISTING 15' & VARIABLE UTILITY EASEMENT EXCLUSIVELY TO JAMES CITY COUNTY SERVICE AUTHORITY (P.B. 83, PG. 79 & 80)
- 14 10' UTILITY EASEMENT HEREBY DEDICATED EXCLUSIVELY TO JAMES CITY COUNTY SERVICE AUTHORITY "FUTURE PUBLIC STREET EXTENSION"
- 15 TEMPORARY CUL-DE-SAC IS TO BE VACATED UPON THE EXTENSION OF QUEEN BISHOP LANE. THIS RIGHT-OF-WAY IS PLATTED WITH THE INTENT OF BEING EXTENDED AND CONTINUED IN ORDER TO PROVIDE INGRESS AND EGRESS TO AND FROM FUTURE SUBDIVISIONS OR ADJACENT PROPERTY.



P.B. 16, PG. 20

ROLLING WOOD (M.B. 46, PG. 81)

City of Williamsburg & County of James City
 Circuit Court: This PLAT was recorded on
 14 January 2003
 at 10:04 AM P.B. 89, PG. 14-16
 DOCUMENT # 030001327
 BETSY B. WOOLRIDGE, CLERK

Betsy Woolridge
 Clerk

W.O. ACAD.DWG\13361\SURVEY\PHASE4.DWG

LAKE POWELL FOREST
 PHASE TWO
 P.B. 76, PG. 77 & 78

LAKE POWELL FOREST
 PHASE THREE
 P.B. 83, PG. 79 & 80

NOW OR FORMERLY
 BOYD CORPORATION
 D.B. 777, PG. 825

LINE TABLE IMPOUNDMENT EASEMENT

LINE	DIRECTION	DISTANCE
L1	N68°19'7"E	62.05'
L2	S2°31'10"E	126.59'
L3	S19°00'52"E	136.87'
L4	S11°16'18"W	102.12'
L5	S44°49'15"E	29.78'
L25	N25°49'14"E	93.43'
L26	N03°04'25"W	43.08'
L27	N23°00'20"W	89.36'
L28	N05°25'40"E	38.29'
L29	N19°43'39"W	76.89'



SUBDIVISION
 OF
 LAKE POWELL FOREST
 PHASE FOUR
 JAMESTOWN MAGISTERIAL DISTRICT
 JAMES CITY COUNTY, VIRGINIA
 SCALE: 1" = 60' DEC. 3, 2001



HORTON & DOUD, P.C.
 SURVEYORS, ENGINEERS & PLANNERS
 300 GEORGE WASHINGTON HIGHWAY N.
 CHESAPEAKE VIRGINIA 23323
 (757) 487-4535



REVISED: JULY 2, 2002
 SHEET 3 OF 3