

City of Williamsburg & County of James City  
 Circuit Court: This PLAT was recorded on  
 12 Dec. 2002  
 at 11:50 A.M. PM. 88 PG. 96  
 DOCUMENT # 020029798  
 BETTY B. WOOLBRIDGE, CLERK  
 [Signature] Dep. Clerk

46-1-01-0-0001  
 "GREENSPRINGS PLANTATION"  
 (09 322, PG 254)

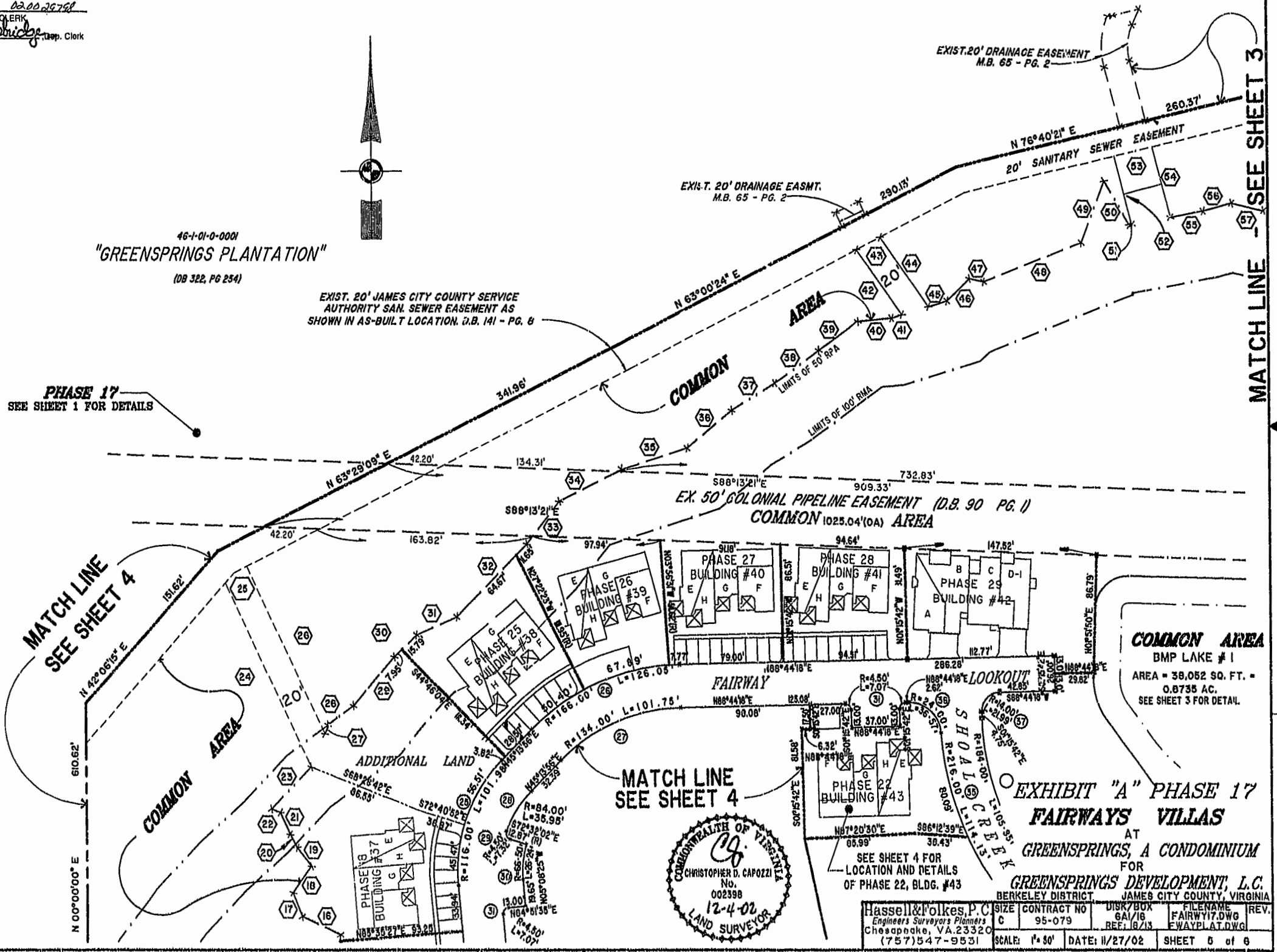
EXIST. 20' JAMES CITY COUNTY SERVICE  
 AUTHORITY SAN. SEWER EASEMENT AS  
 SHOWN IN AS-BUILT LOCATION. D.B. 141 - PG. 8

PHASE 17  
 SEE SHEET 1 FOR DETAILS

MATCH LINE  
 SEE SHEET 4

MATCH LINE  
 SEE SHEET 4

MATCH LINE  
 SEE SHEET 3



**COMMON AREA**  
 BMP LAKE #1  
 AREA = 38,052 SQ. FT. =  
 0.8735 AC.  
 SEE SHEET 3 FOR DETAIL.

**EXHIBIT "A" PHASE 17  
 FAIRWAYS VILLAS**  
 AT  
**GREENSPRINGS, A CONDOMINIUM**  
 FOR  
**GREENSPRINGS DEVELOPMENT, L.C.**  
 BERKELEY DISTRICT, JAMES CITY COUNTY, VIRGINIA

SEE SHEET 4 FOR  
 LOCATION AND DETAILS  
 OF PHASE 22, BLDG. #43



Hassell & Folkes, P.C. Engineers Surveyors Planners Chesapeake, VA 23320 (757) 547-9531	SCALE: 1" = 50'	DATE: 11/27/02	SHEET 5 of 8
--	-----------------	----------------	--------------