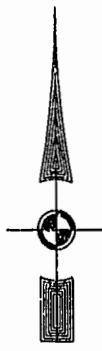


#020029798

88 PAGE 95

EXIST. 20' JAMES CITY COUNTY SERVICE AUTHORITY SAN. SEWER EASEMENT AS SHOWN IN AS-BUILT LOCATION. D.B. 141 - PG. 388

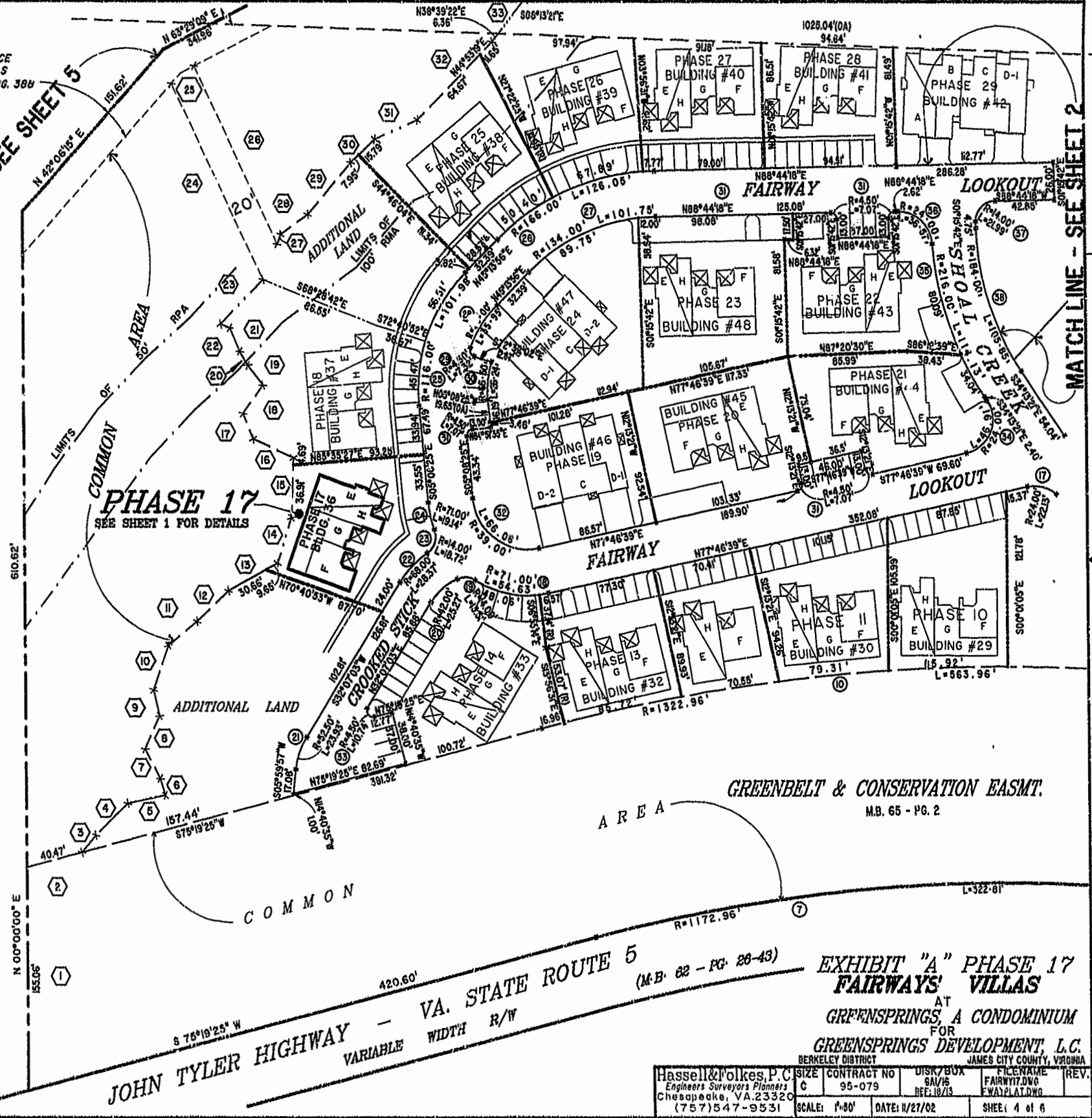


MATCH LINE - SEE SHEET 5

MATCH LINE - SEE SHEET 2

46-1-01-0-0001
"GREENSPRINGS PLANTATION"
(DB 322, PG 254)

City of Williamsburg & County of James City
Circuit Court: This PLAT was recorded on
12 Dec 2002
at 11:50 AM/PM, PB 98 PG 92-97
DOCUMENT # 020029798
BETSY B. WOOLHIDGE, CLERK
Betsy B. Woolhidge, Clerk



JOHN TYLER HIGHWAY - VA. STATE ROUTE 5
VARIABLE WIDTH R/W
(M.B. 82 - PG. 88-43)

EXHIBIT "A" PHASE 17
FAIRWAYS' VILLAS
AT
GREENSPRINGS A CONDOMINIUM
FOR
GREENSPRINGS DEVELOPMENT, L.C.
BERKELEY DISTRICT JAMES CITY COUNTY, VIRGINIA

Hassell & Folkes, P.C. Engineers Surveyors Planners Chesapeake, VA. 23320 (757) 547-9531	CONTRACT NO 95-079	DISK/BOX SAL/16 REF: 10/13	FILENAME FAIRW17.DWG FW17PLAT.DWG	REV. 4 of 6
SCALE: 1"=80'	DATE: 11/27/02			