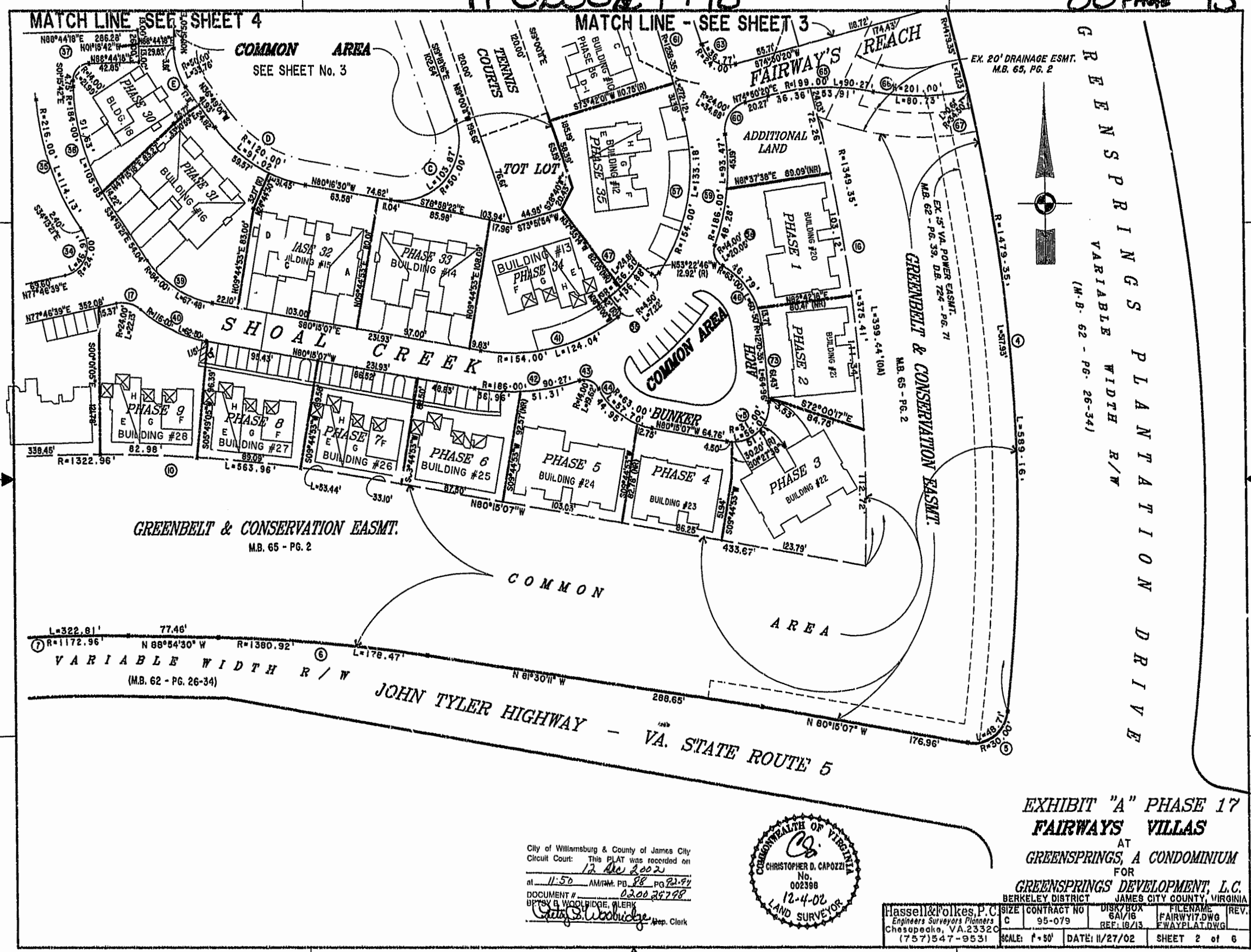


#020029798

88 PAGE 93



GREENSPRINGS VARIABLE WIDTH R/W
 (M.B. 62 - PG. 26-34)

EXHIBIT "A" PHASE 17
FAIRWAYS VILLAS
 AT
GREENSPRINGS, A CONDOMINIUM
 FOR
GREENSPRINGS DEVELOPMENT, L.C.
 BERKELEY DISTRICT JAMES CITY COUNTY, VIRGINIA

City of Williamsburg & County of James City
 Circuit Court: This PLAT was recorded on
12 Nov 2002
 at 11:50 AM/PM, PG. 88 PG. 22-91
 DOCUMENT # 020029798
 Betsy B. Woolridge, Clerk
Cathy S. Woolridge Dep. Clerk



Hassell & Folkes, P.C. Engineers Surveyors Planners Chesapeake, VA 23320 (757) 547-9531	SIZE: C CONTRACT NO: 95-079	DISK/BOX: 6A/16 REF: 16/13	FILENAME: FAIRWAY17.DWG REV: FWAYPLAT.DWG	SCALE: 1"=50' DATE: 11/27/02 SHEET 2 of 6
--	--------------------------------	-------------------------------	--	---