

#022260

88 PAGE 89

JAMES CITY COUNTY TP 33-3-01-27
NOW OR FORMERLY
ARTCRAFT - STRATFORD, L.C.
D.B. 649 P. 470

JAMES CITY COUNTY TP 33-3-01-28
NOW OR FORMERLY
GARY E. & CATHY L. NESTER
D.B. 509 P. 735

JAMES CITY COUNTY TP 33-3-01-29
NOW OR FORMERLY
GARY E. & CATHY L. NESTER
D.B. 619 P. 683

PHASE ELEVEN

BLDG. 8
SEE DETAIL ON SHEET 1

ADDITIONAL LAND

DESMONDE LANE
COMMON AREA
VAR. WIDTH UTILITY & INGRESS/EGRESS ESMT.

CLAIBORNE DRIVE

RAVEN TERRACE
SEE SHEET 2

ADDITIONAL LAND

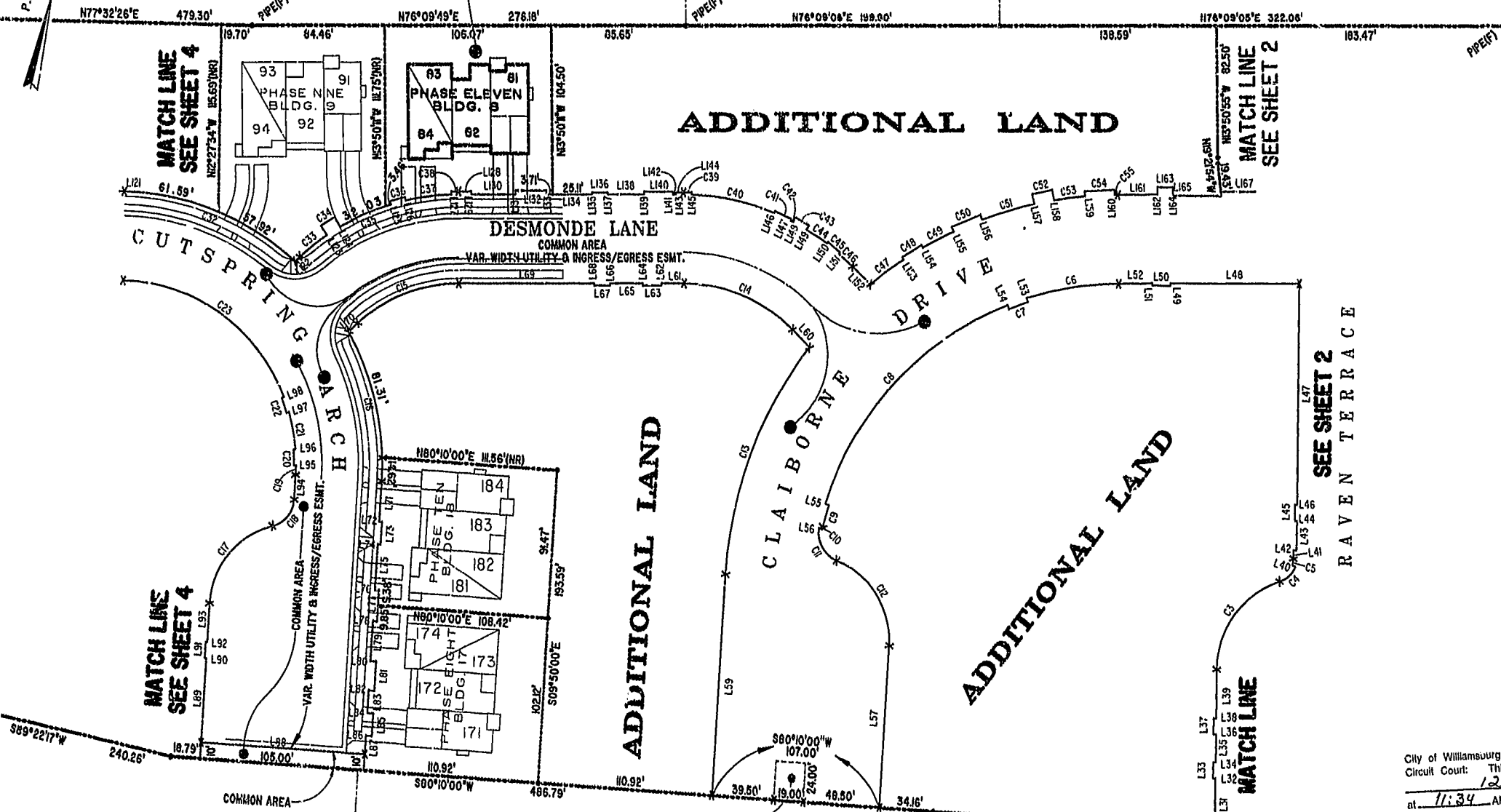
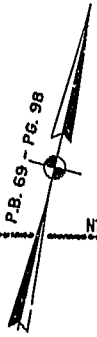
ADDITIONAL LAND

MATCH LINE
SEE SHEET 4

MATCH LINE
SEE SHEET 2

MATCH LINE
SEE SHEET 4

MATCH LINE



City of Williamsburg & County of James City
Circuit Court: This PLAT was recorded on
12 Dec 2002
at 11:34 AM/PM/PB EL PG 87-91
DOCUMENT # 022260
BY S. B. WOOLFRIDGE, CLERK
Gary S. Woodridge, Clerk

EXHIBIT "A"
CLAIBORNE
(A CONDOMINIUM COMMUNITY)
PHASE ELEVEN

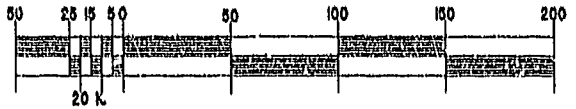
TP 202-08-00-001
NOW OR FORMERLY
752 L.L.C.
INST. #980305

TP 281-10-00-B
NOW OR FORMERLY
752 L.L.C.
INST. #980305

TP 282-08-00-001
NOW OR FORMERLY
752 L.L.C.
INST. #980305

TP 281-10-00-B
NOW OR FORMERLY
752 L.L.C.
INST. #980305

GRAPHIC SCALE: 1" = 50'



Hassell & Folkes, P.C. Engineers Surveyors Planners Chesapeake, VA 23320 (757) 547-9531	SIZE	CONTRACT NO	FILE NAME	REV.
	C		S\PLATS\CLAIORNE\PH11-BLDG-0280	
SCALE: 1" = 50'		DATE: 11/27/02	SHEET 3 of 8	

A-1520

A-1520